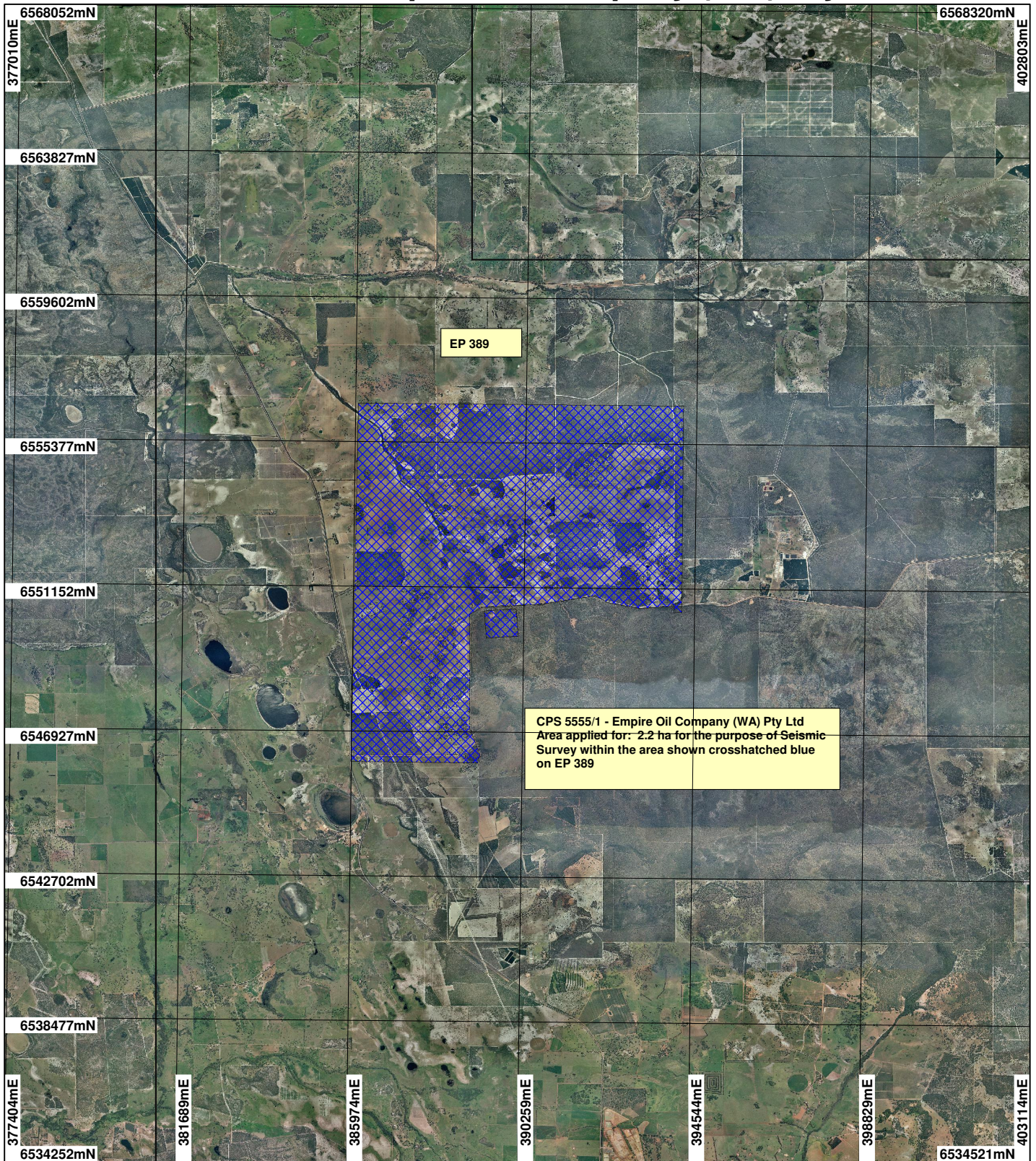


# CPS 5555/1 - Empire Oil Company (WA) Pty Ltd



CPS 5555/1 - Empire Oil Company (WA) Pty Ltd  
 Area applied for: 2.2 ha for the purpose of Seismic  
 Survey within the area shown crosshatched blue  
 on EP 389

## LEGEND

### Clearing Instruments

-  Areas Applied to Clear
-  Petroleum Titles
- Gingjin 50cm Orthomosaic - Landgate 2008



Scale 1:150000

(Approximate when reproduced at A4)

Geocentric Datum Australia 1994

Note: the data in this map have not been projected. This may result in geometric distortion or measurement inaccuracies.

..... Date .....

Officer with delegated authority under Section 20 of the Environmental Protection Act 1986

Information derived from this map should be confirmed with the data custodian acknowledged by the agency acronym in the legend.



WA Crown Copyright 2002

\* Project Data. This data has not been quality assured. Please contact map author for details.