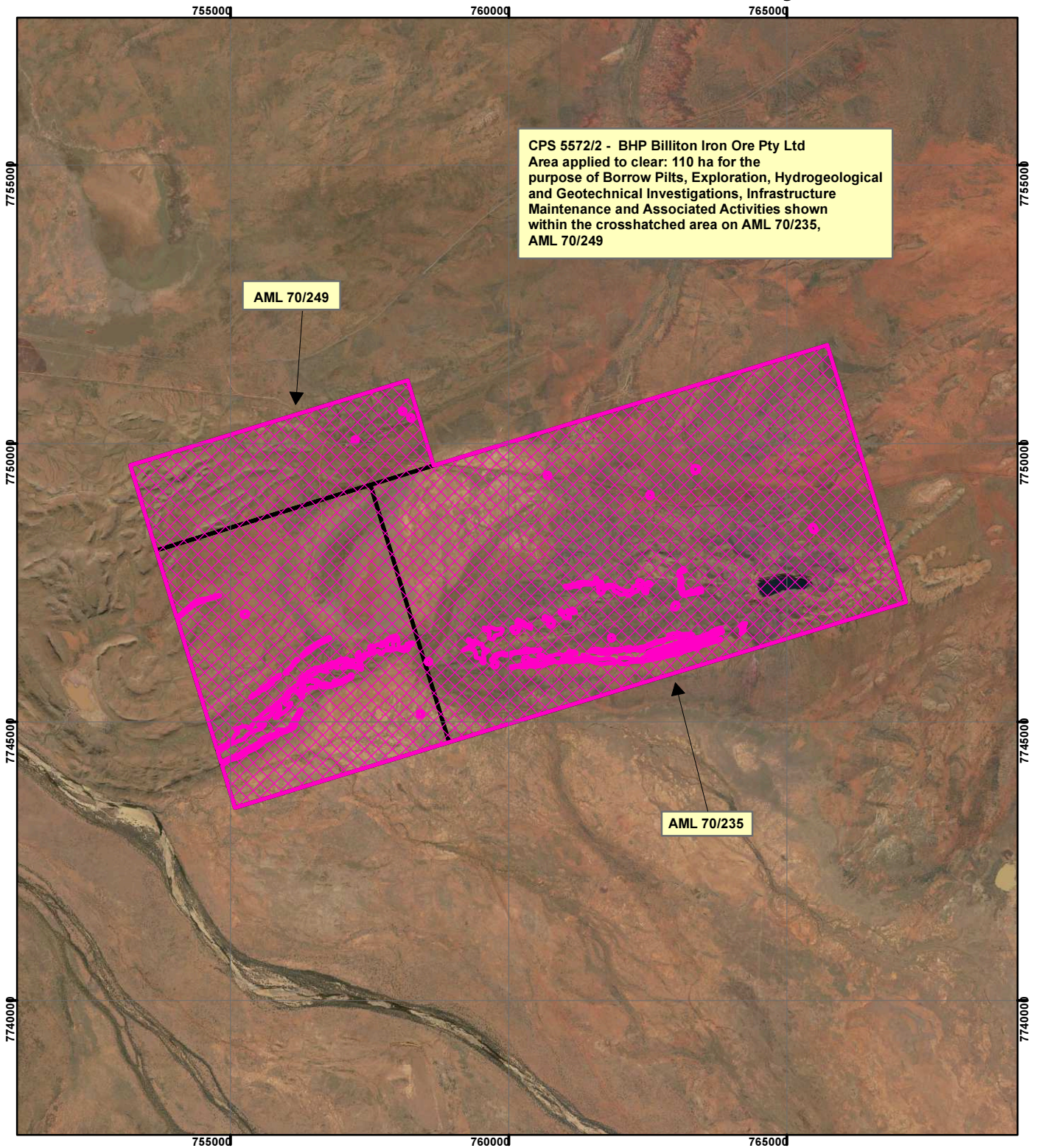


# CPS 5572/2 - BHP Billiton Iron Ore Pty Ltd



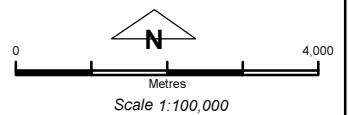
## Legend

 Clearing Instruments

### TENID

 AML7000235

 AML7000249



Geocentric Datum Australia 1994

*Note: the data in this map have not been projected. This may result in geometric distortion or measurement inaccuracies.*

..... Date .....

Officer with delegated authority under Section 20 of  
 the Environmental Protection Act 1986

Information derived from this map should be  
 confirmed with the data custodian acknowledged  
 by the agency acronym in the legend.

