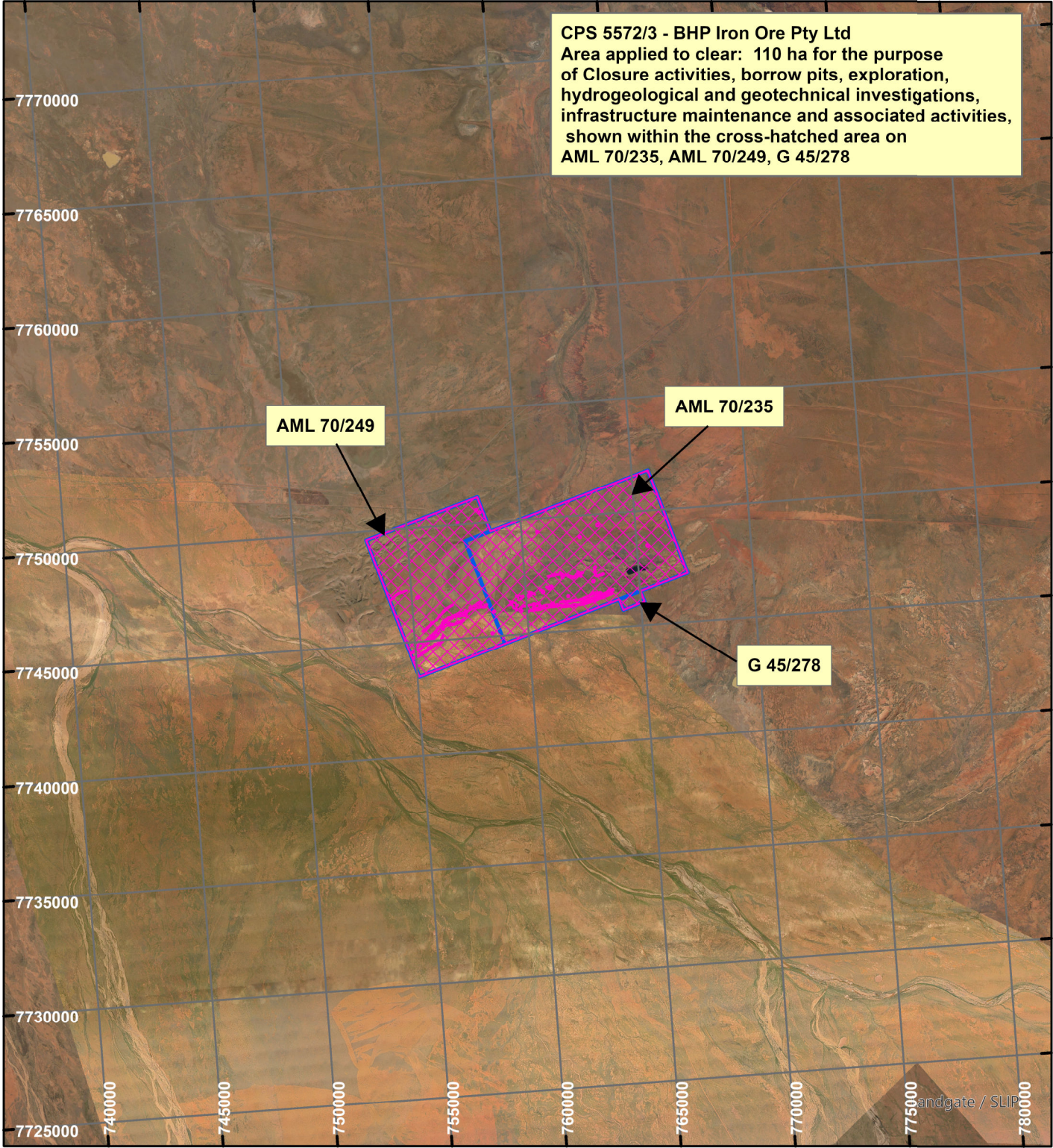
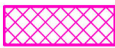


CPS 5572/3 - BHP Iron Ore Pty Ltd

CPS 5572/3 - BHP Iron Ore Pty Ltd
Area applied to clear: 110 ha for the purpose
of Closure activities, borrow pits, exploration,
hydrogeological and geotechnical investigations,
infrastructure maintenance and associated activities,
shown within the cross-hatched area on
AML 70/235, AML 70/249, G 45/278



LEGEND



Clearing Instruments



Mining Tenements



Scale 1:250,000
(Approximate when reproduced at A4)

Geocentric Datum Australia 1994

Note: the data in this map have not been
projected. This may result in geometric
distortion or measurement inaccuracies.

..... Date

Officer with delegated authority under Section 20 of
the Environmental Protection Act 1986

Information derived from this map should be
confirmed with the data custodian acknowledged
by the agency acronym in the legend.