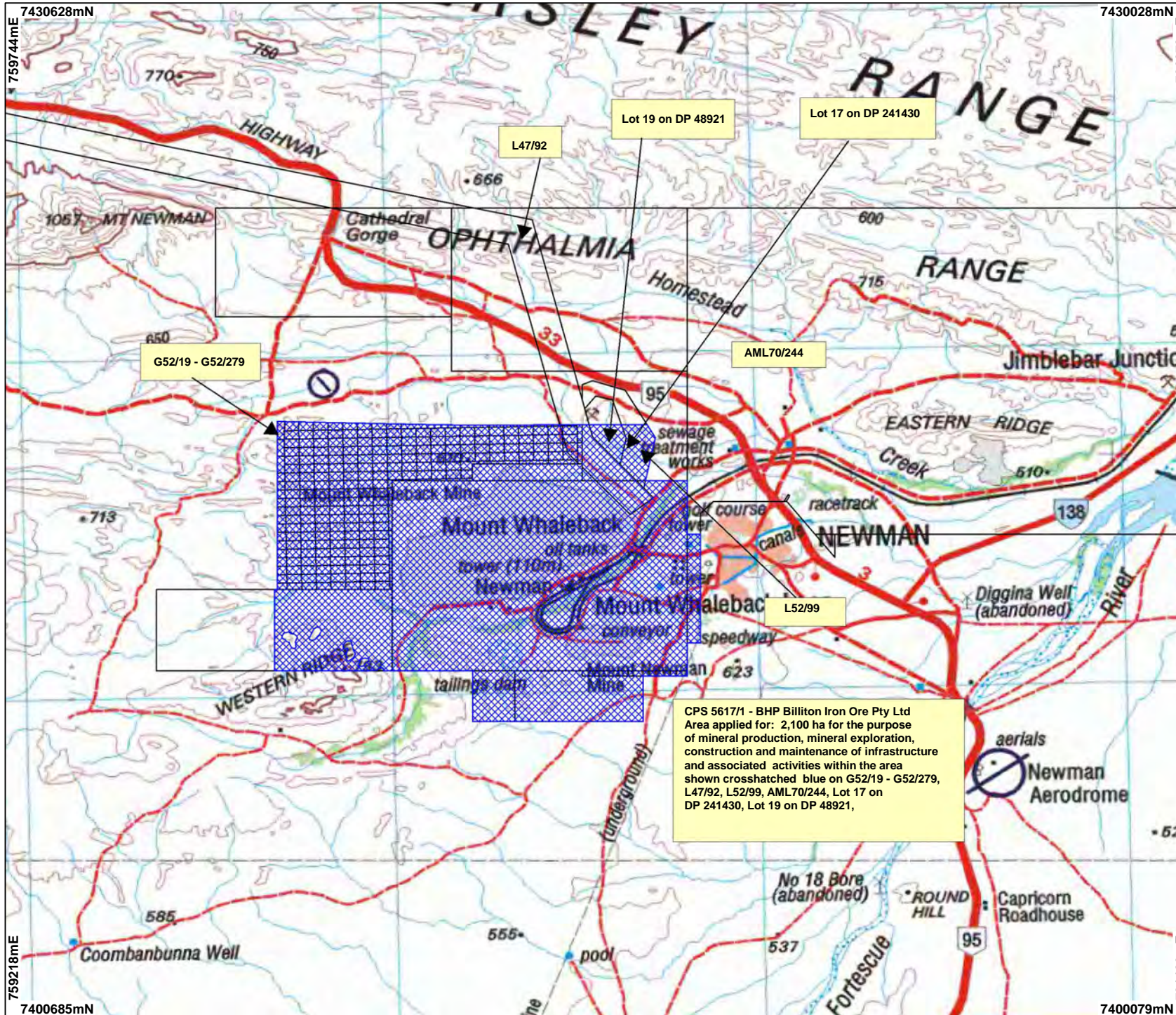
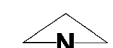


CPS 5617/1 - BHP Billiton Iron Ore Pty Ltd



CPS 5617/1 - BHP Billiton Iron Ore Pty Ltd
 Area applied for: 2,100 ha for the purpose
 of mineral production, mineral exploration,
 construction and maintenance of infrastructure
 and associated activities within the area
 shown crosshatched blue on G52/19 - G52/279,
 L47/92, L52/99, AML70/244, Lot 17 on
 DP 241430, Lot 19 on DP 48921,


- LEGEND**
- Mining Tenements
 - Land parcels related to instrument
 - Clearing Instruments
 - Cadastre
 - NATMAP 250K Series Mapping - GA 08/03


 0 ————— 3.75 km
 Scale 1:150000
 (Approximate when reproduced at A4)
 Geocentric Datum Australia 1994
 Note: the data in this map have not been
 projected. This may result in geometric
 distortion or measurement inaccuracies.

..... Date

Officer with delegated authority under Section 20 of
 the Environmental Protection Act 1986

Information derived from this map should be
 confirmed with the data custodian acknowledged
 by the agency acronym in the legend.


 WESTERN AUSTRALIA
 WA Crown Copyright 2002