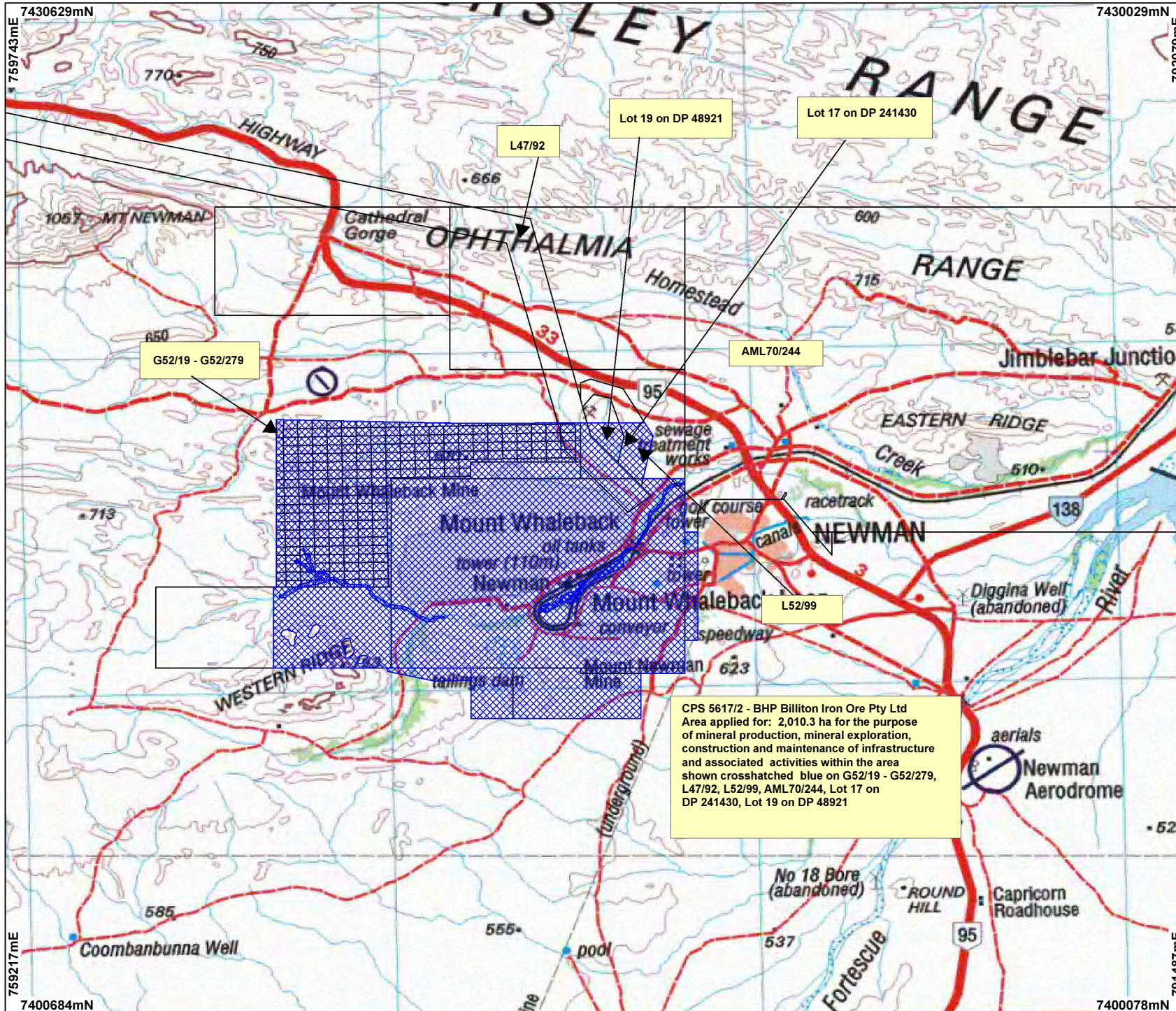


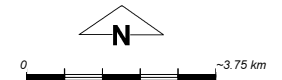
# CPS 5617/2 - BHP Billiton Iron Ore Pty Ltd



CPS 5617/2 - BHP Billiton Iron Ore Pty Ltd  
 Area applied for: 2,010.3 ha for the purpose  
 of mineral production, mineral exploration,  
 construction and maintenance of infrastructure  
 and associated activities within the area  
 shown crosshatched blue on G52/19 - G52/279,  
 L47/92, L52/99, AML70/244, Lot 17 on  
 DP 241430, Lot 19 on DP 48921

## LEGEND

- Mining Tenements
- Land parcels related to instrument
- Clearing Instruments
- Cadastre
- NATMAP 250K Series Mapping - GA 08/03



Scale 1:150000  
 (Approximate when reproduced at A4)  
 Geocentric Datum Australia 1994  
 Note: the data in this map have not been  
 projected. This may result in geometric  
 distortion or measurement inaccuracies.

..... Date .....

Officer with delegated authority under Section 20 of  
 the Environmental Protection Act 1986

Information derived from this map should be  
 confirmed with the data custodian acknowledged  
 by the agency acronym in the legend.

