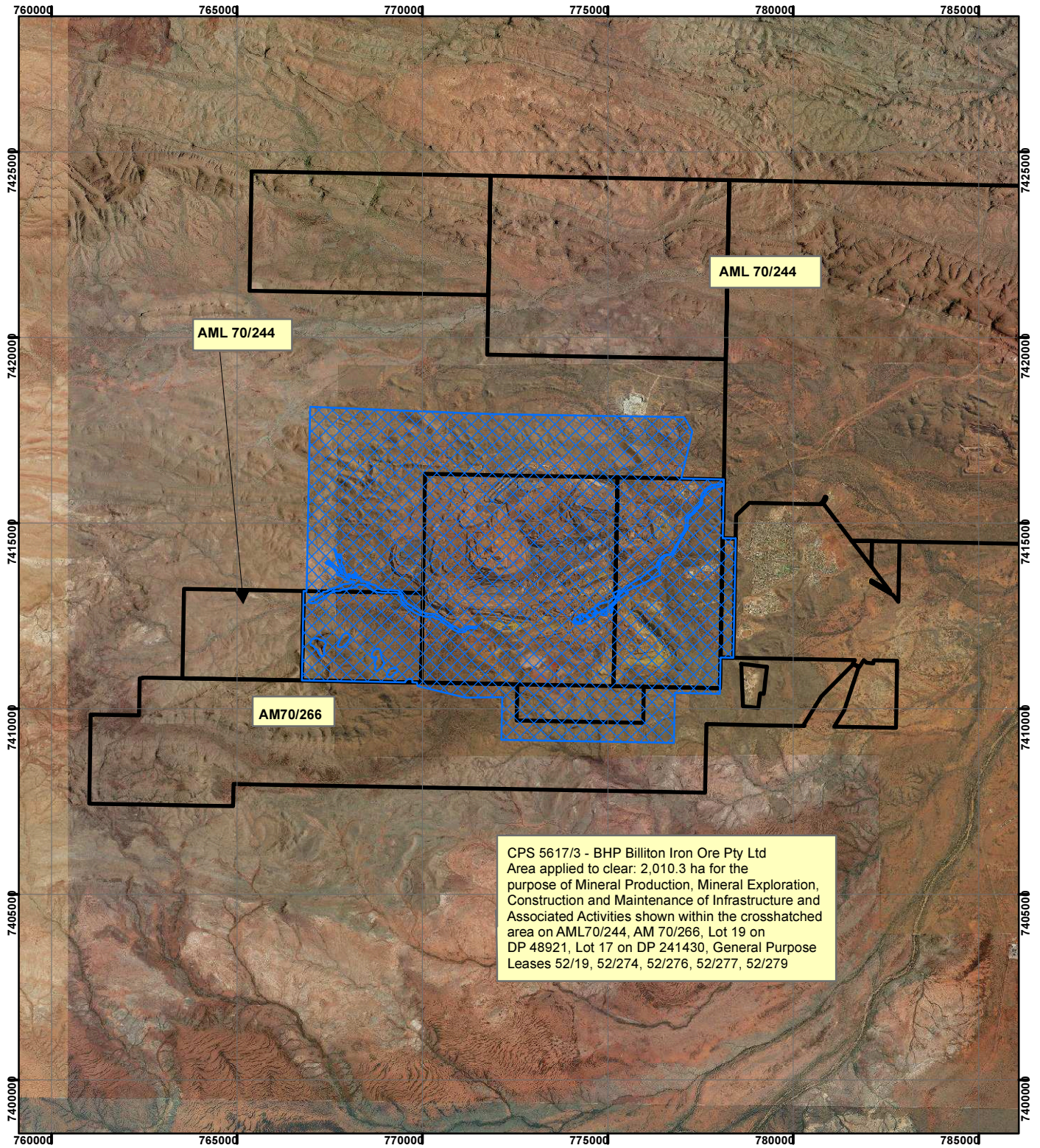


CPS 5617/3 - BHP Billiton Iron Ore Pty Ltd



CPS 5617/3 - BHP Billiton Iron Ore Pty Ltd
 Area applied to clear: 2,010.3 ha for the
 purpose of Mineral Production, Mineral Exploration,
 Construction and Maintenance of Infrastructure and
 Associated Activities shown within the crosshatched
 area on AML70/244, AM 70/266, Lot 19 on
 DP 48921, Lot 17 on DP 241430, General Purpose
 Leases 52/19, 52/274, 52/276, 52/277, 52/279

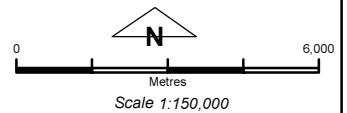
Legend

 Clearing Instruments

Mining Tenements

 ML 244SA

 M 266SA



Geocentric Datum Australia 1994

Note: the data in this map have not been projected. This may result in geometric distortion or measurement inaccuracies.

..... Date

Officer with delegated authority under Section 20 of
 the Environmental Protection Act 1986

Information derived from this map should be
 confirmed with the data custodian acknowledged
 by the agency acronym in the legend.

