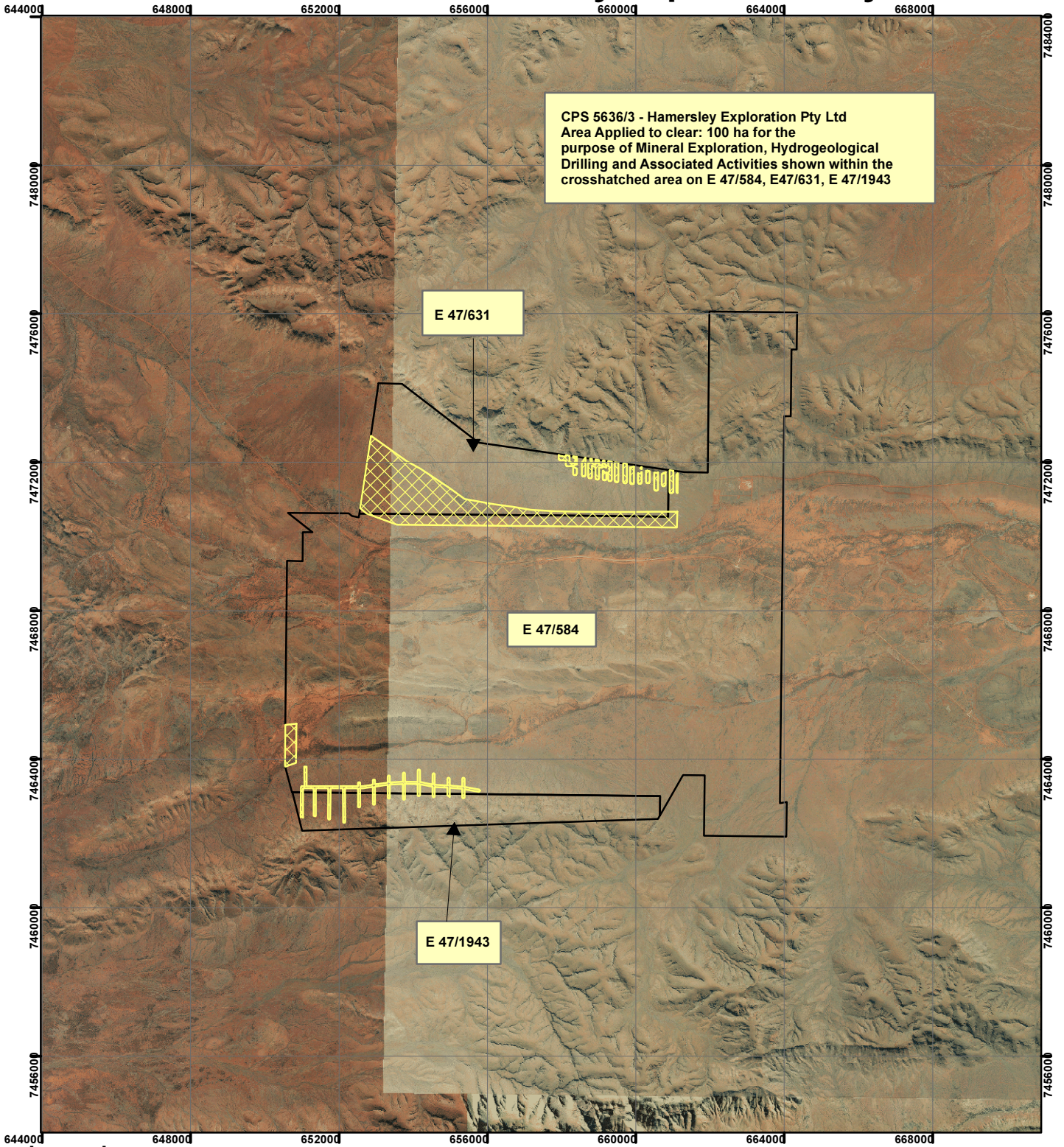


CPS 5636/3 - Hamersley Exploration Pty Ltd




CPS 5636/3 - Hamersley Exploration Pty Ltd
 Area Applied to clear: 100 ha for the
 purpose of Mineral Exploration, Hydrogeological
 Drilling and Associated Activities shown within the
 crosshatched area on E 47/584, E47/631, E 47/1943

E 47/631

E 47/584

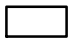
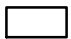
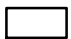
E 47/1943

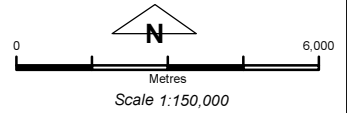
Legend

 Clearing Instruments

Mining Tenements

FMT_TENID

-  E 47/1943-I
-  E 47/584-I
-  E 47/631-I



Geocentric Datum Australia 1994
 Note: the data in this map have not been
 projected. This may result in geometric
 distortion or measurement inaccuracies.

..... Date

Officer with delegated authority under Section 20 of
 the Environmental Protection Act 1986

Information derived from this map should be
 confirmed with the data custodian acknowledged
 by the agency acronym in the legend.

