

Reserve 39583
2.0154 ha

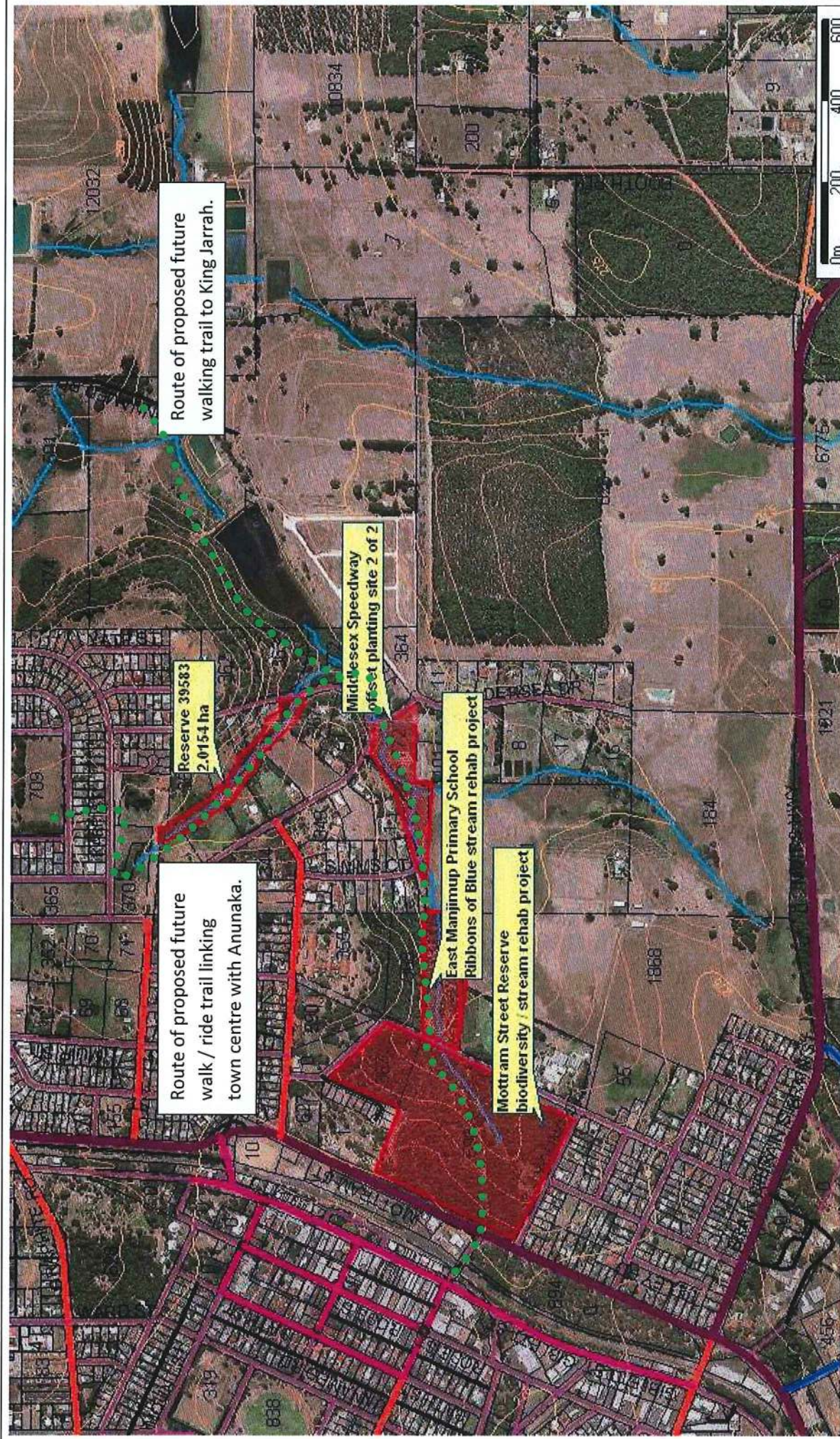
Reserve 39583
2.0154 ha



SHIRE OF
MANJIMUP

27-29 Esplanade St., PO Box 1
Manjimup WA 6258
Tel: (08) 9731 7777
Fax: (08) 9731 7771
Web: www.manjimup.wa.gov.au





Route of proposed future walking trail to King Jarrah.

Route of proposed future walk / ride trail linking town centre with Anunaka.

Middlesex Speedway offset planting site 2 of 2

East Manjimup Primary School Ribbons of Blue stream rehab project

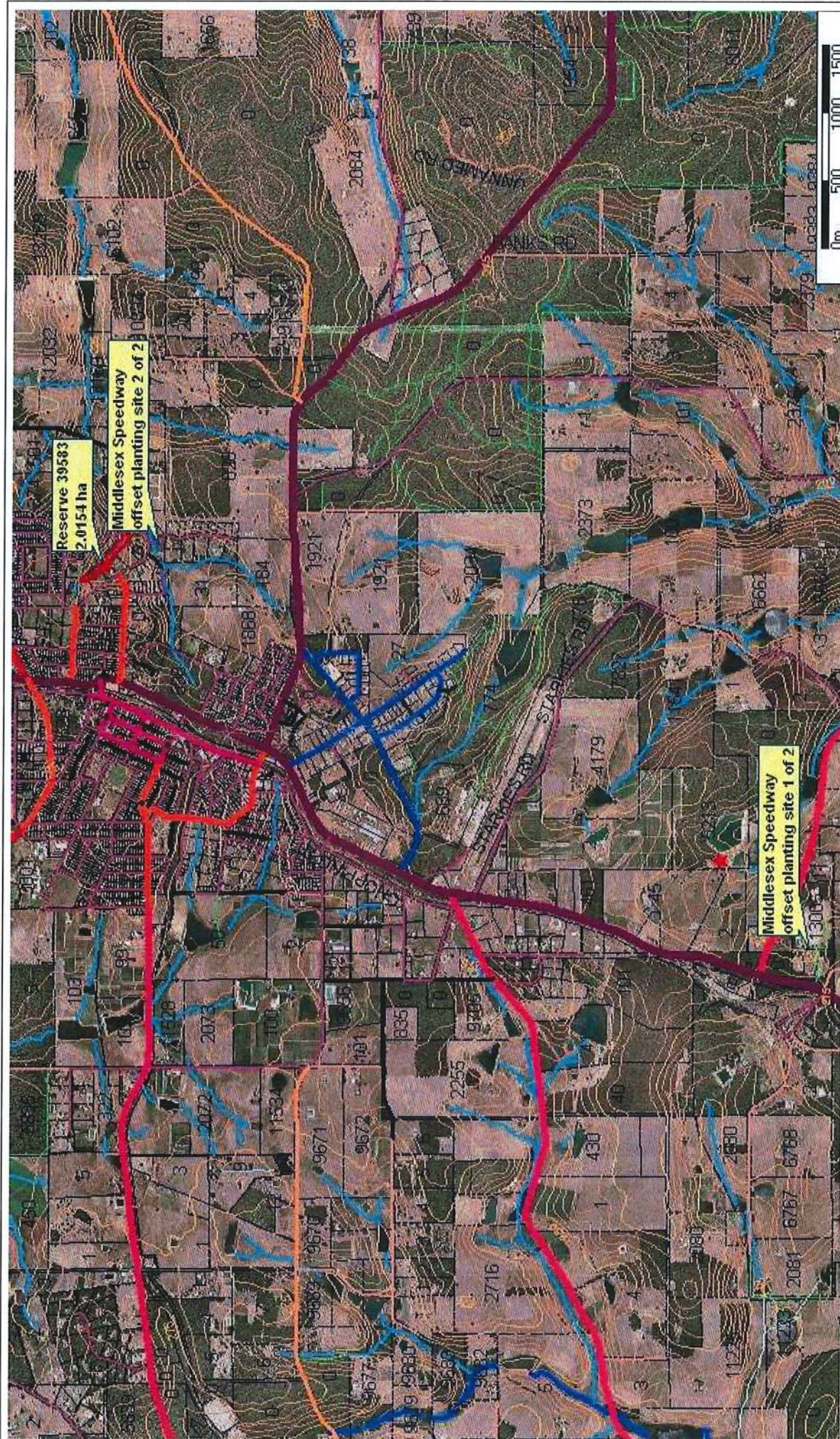
Mottram Street Reserve biodiversity / stream rehab project

Reserve 39583
2.0154 ha



Shire of Manjimup – East – West native vegetation corridor (East axis)

Indicating proposed trail routes and biodiversity plantings



33-39 Cross St | PO Box 1
 Manjimup WA 6258
 Tel: (08) 9271 7777
 Fax: (08) 9271 7771
 Web: www.manjimup.wa.gov.au



Offset planting sites

