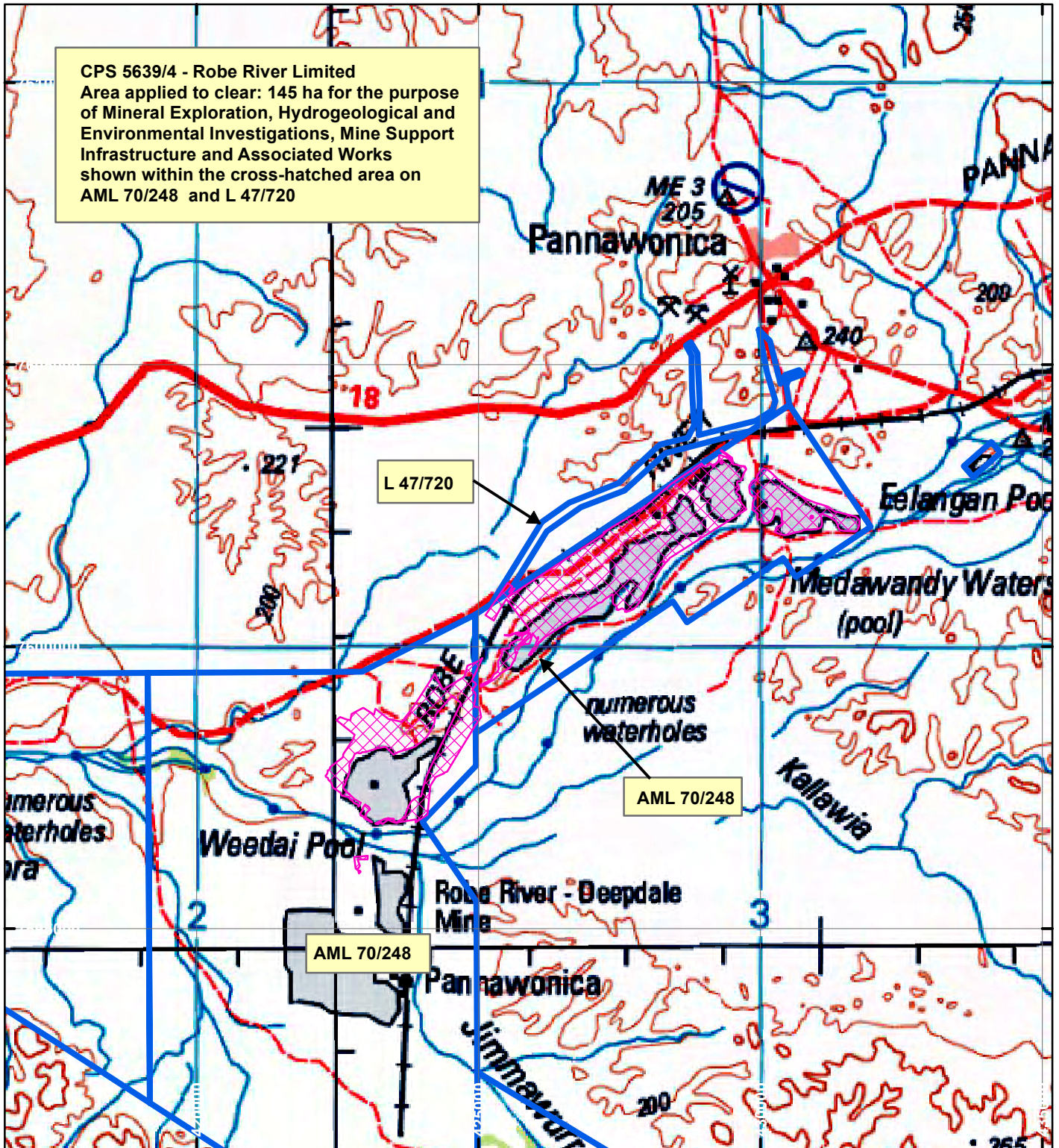
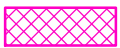


CPS 5639/4 - Robe River Limited

CPS 5639/4 - Robe River Limited
 Area applied to clear: 145 ha for the purpose
 of Mineral Exploration, Hydrogeological and
 Environmental Investigations, Mine Support
 Infrastructure and Associated Works
 shown within the cross-hatched area on
 AML 70/248 and L 47/720



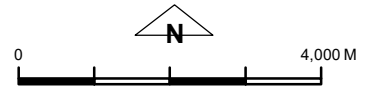
LEGEND



Clearing Instruments



Mining Tenements



Scale 1:100,000

(Approximate when reproduced at A4)

Geocentric Datum Australia 1994

Note: the data in this map have not been
 projected. This may result in geometric
 distortion or measurement inaccuracies.

..... Date

Officer with delegated authority under Section 20 of
 the Environmental Protection Act 1986

Information derived from this map should be
 confirmed with the data custodian acknowledged
 by the agency acronym in the legend.



WA Crown Copyright 2002