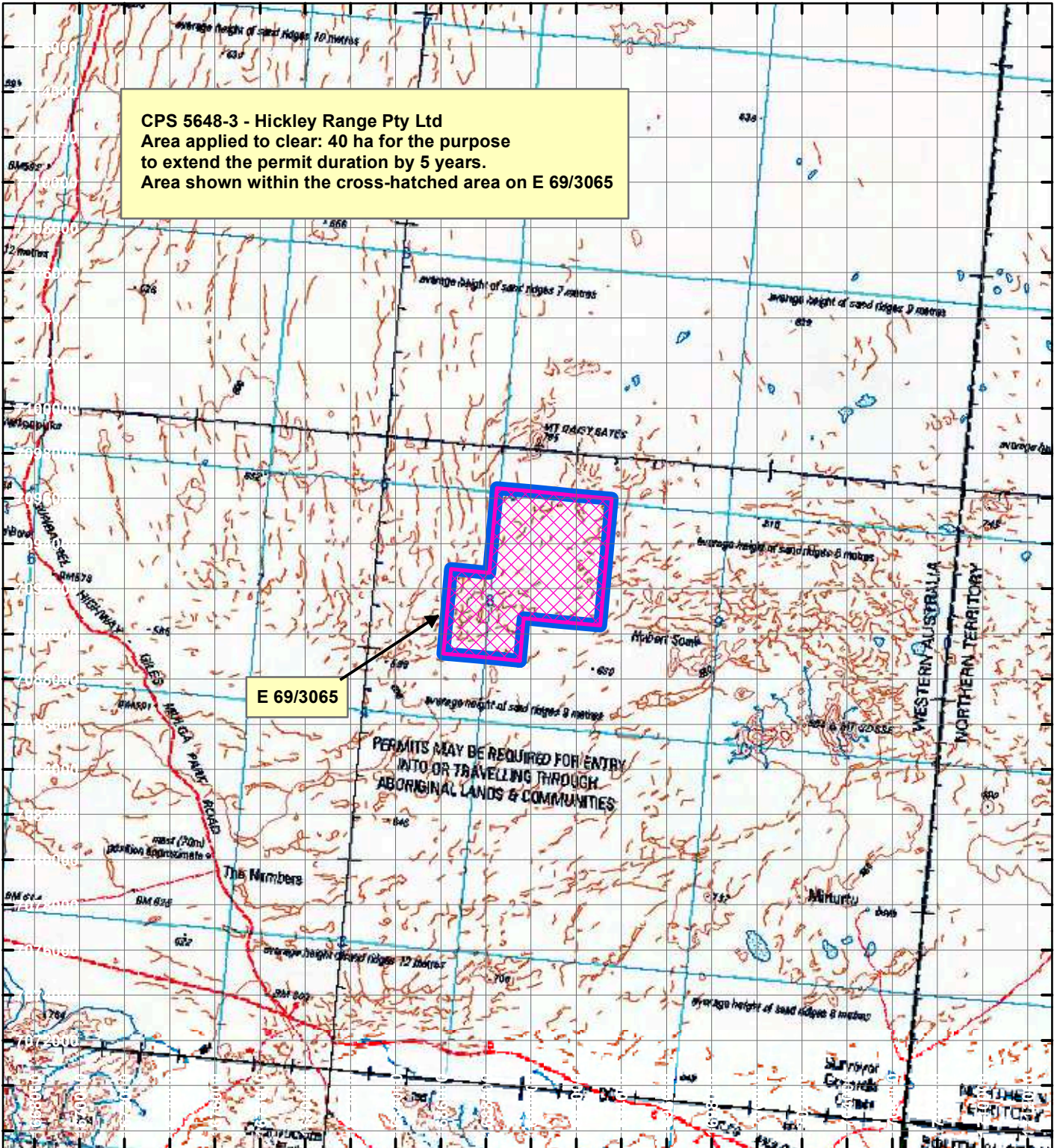
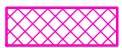


CPS 5648-3 - Hickley Range Pty Ltd

CPS 5648-3 - Hickley Range Pty Ltd
 Area applied to clear: 40 ha for the purpose
 to extend the permit duration by 5 years.
 Area shown within the cross-hatched area on E 69/3065



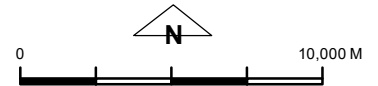
LEGEND



Clearing Instruments



Mining Tenements



Scale 1:250,000

(Approximate when reproduced at A4)

Geocentric Datum Australia 1994

Note: the data in this map have not been projected. This may result in geometric distortion or measurement inaccuracies.

..... Date

Officer with delegated authority under Section 20 of the Environmental Protection Act 1986

Information derived from this map should be confirmed with the data custodian acknowledged by the agency acronym in the legend.



WA Crown Copyright 2002