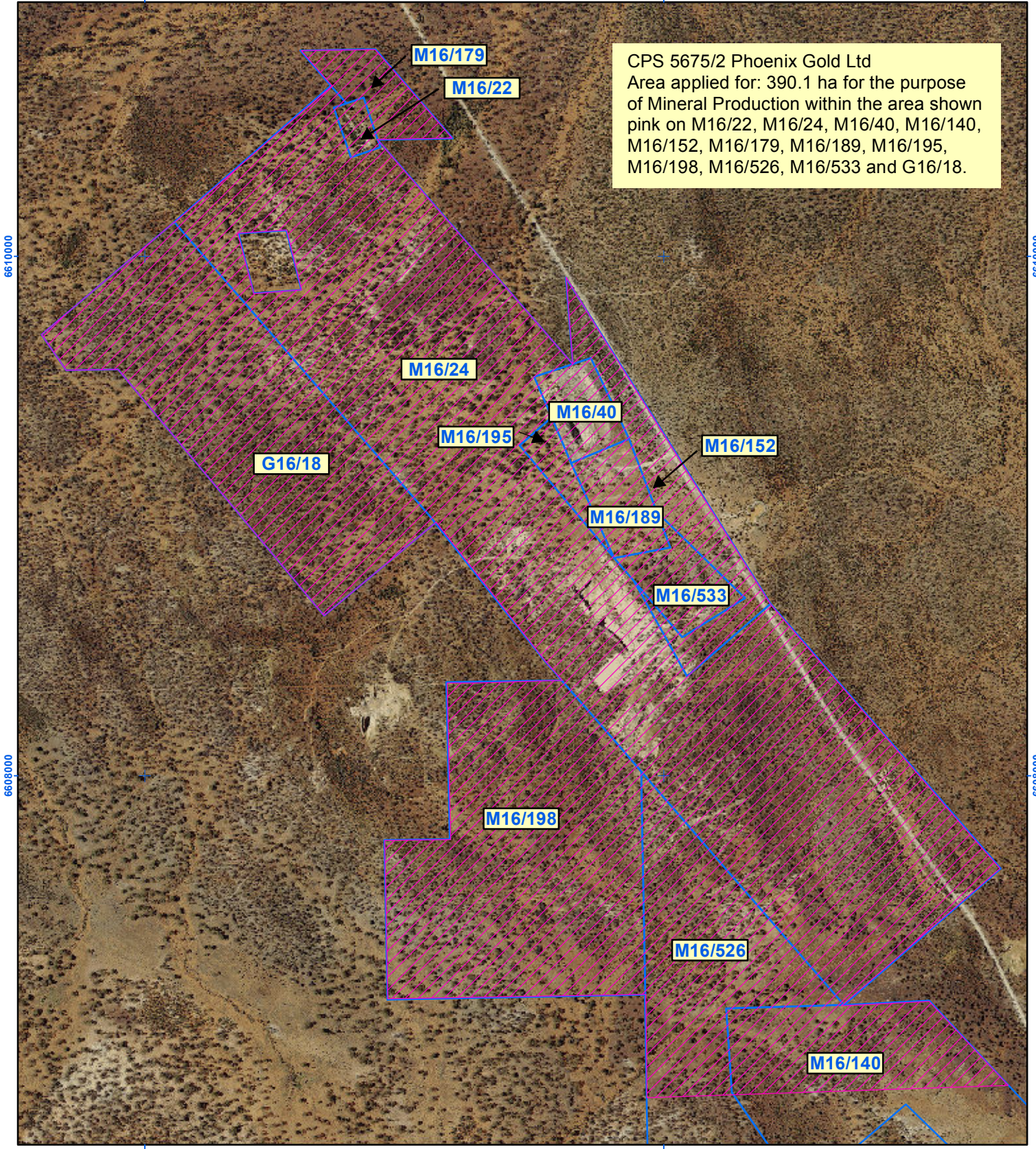


CP 5675/2

310000

312000



CPS 5675/2 Phoenix Gold Ltd
 Area applied for: 390.1 ha for the purpose
 of Mineral Production within the area shown
 pink on M16/22, M16/24, M16/40, M16/140,
 M16/152, M16/179, M16/189, M16/195,
 M16/198, M16/526, M16/533 and G16/18.

6610000

6610000


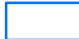
6600000

6600000

310000

312000

Legend

-  Clearing Instrument
-  Mining Tenements

Kalgoorlie Orthophoto October 2011



0 125 250 500 750 1,000
 Metres

Scale 1:20 000

Geocentric Datum Australia 1994
 Note: the data in this map have not been
 projected. This may result in geometric
 distortion or measurement inaccuracies.

.....Date.....
 Officer with delegated authority under Section 20 of
 the Environmental Protection Act 1986.
 Information derived from this map should be
 confirmed with data custodian acknowledged
 by the agency acronym in the legend.



WA Crown Copyright 2002