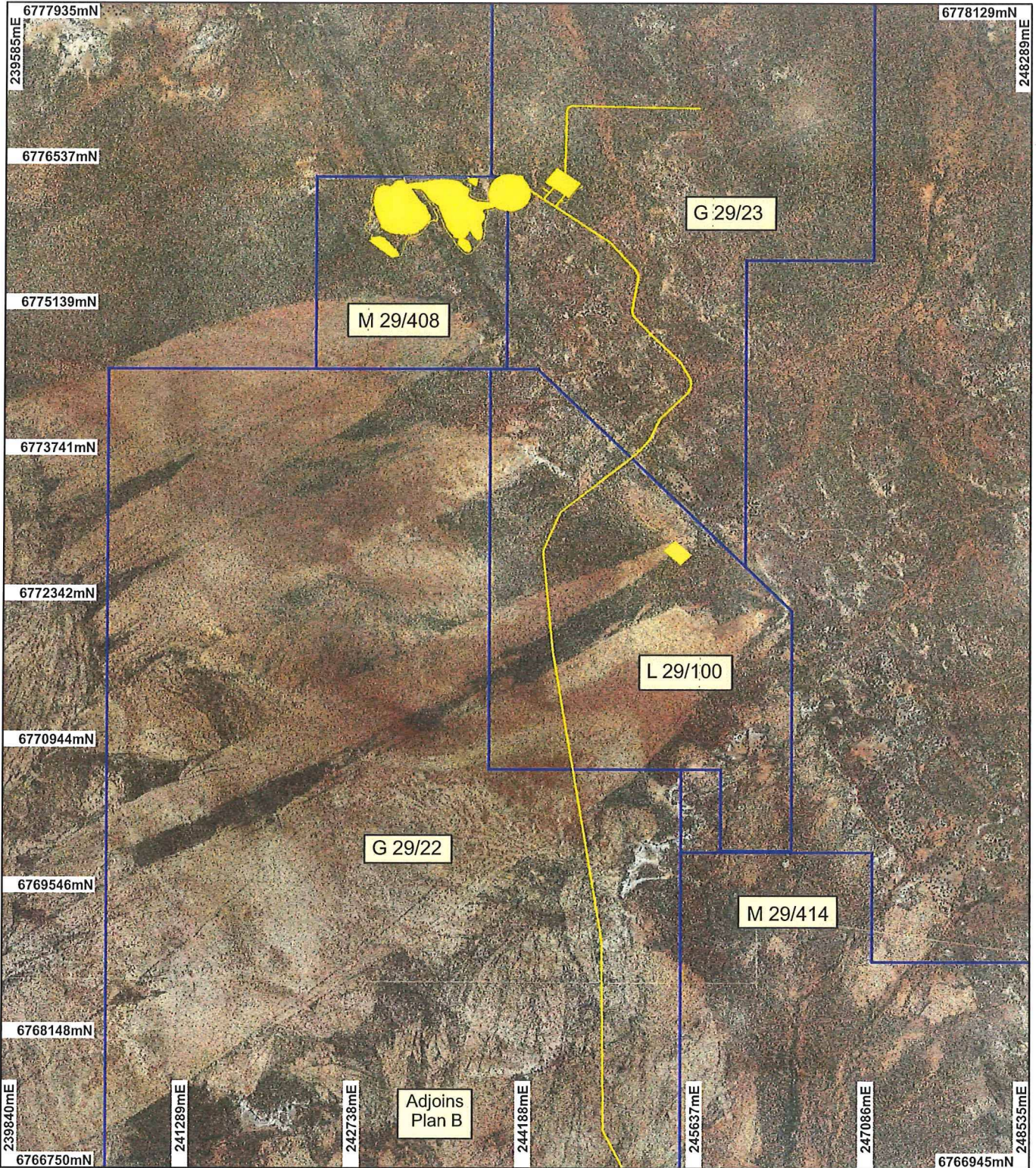


PLAN 5764/1A



LEGEND

- Mining Tenements
 - Clearing Instruments
 - Areas Approved to Clear
- Mount Mason 1.4m
Orthomosaic - Landgate
2003



0 -1.5 km

Scale 1:50000
(Approximate when reproduced at A4)

Geocentric Datum Australia 1994

Note: the data in this map have not been projected. This may result in geometric distortion or measurement inaccuracies.

Date 17/1/03

STEVE TANTALA

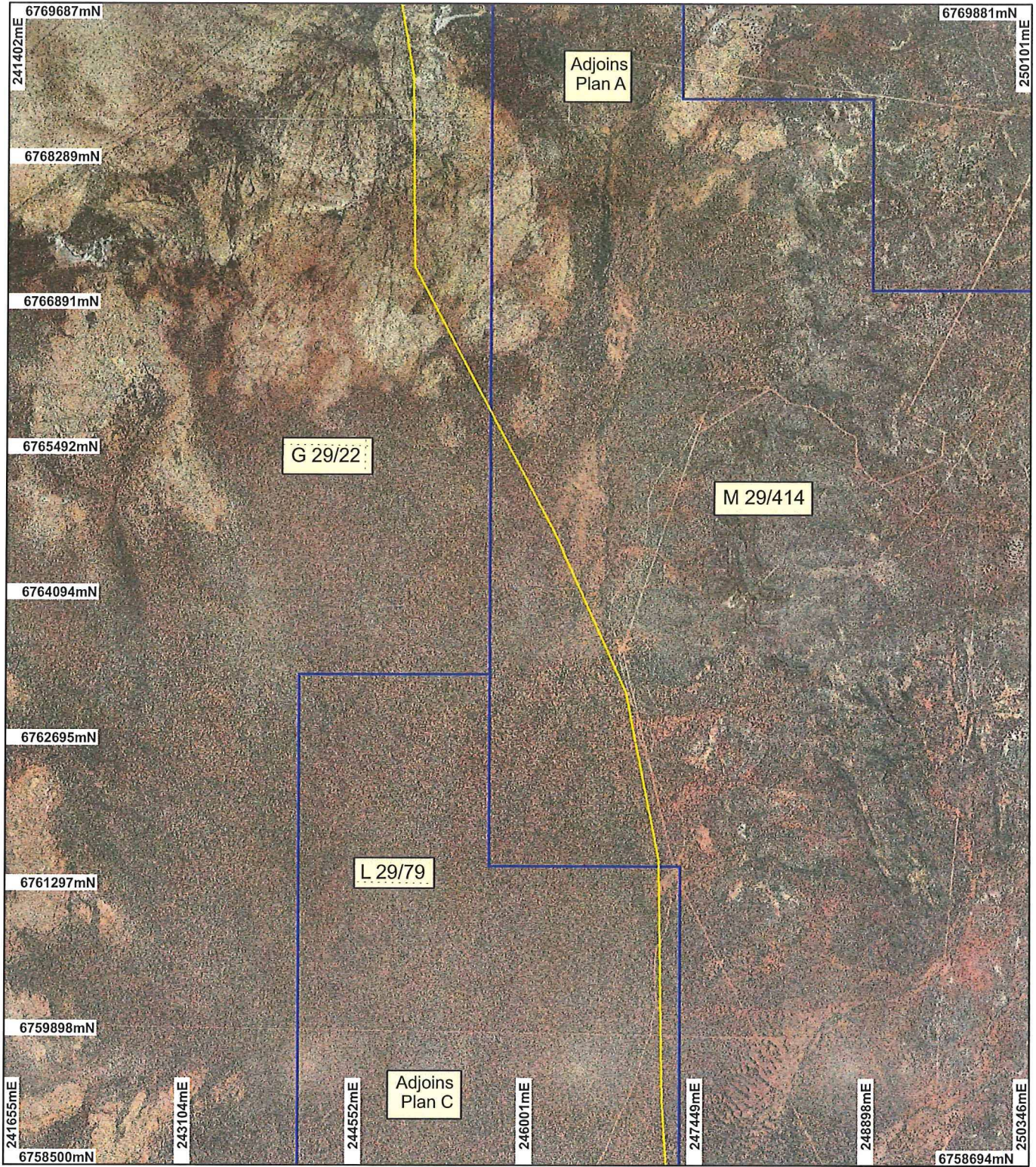
Officer with delegated authority under Section 20 of
the Environmental Protection Act 1986

Information derived from this map should be
confirmed with the data custodian acknowledged
by the agency acronym in the legend.



WA Crown Copyright 2002

PLAN 5764/1B



LEGEND

- Mining Tenements
 - Clearing Instruments
 - Areas Approved to Clear
- Mount Mason 1.4m
Orthomosaic - Landgate
2003



Scale 1:50000
(Approximate when reproduced at A4)

Geocentric Datum Australia 1994

Note: the data in this map have not been projected. This may result in geometric distortion or measurement inaccuracies.

Signature of Steve Tantala and Date 17/10/13

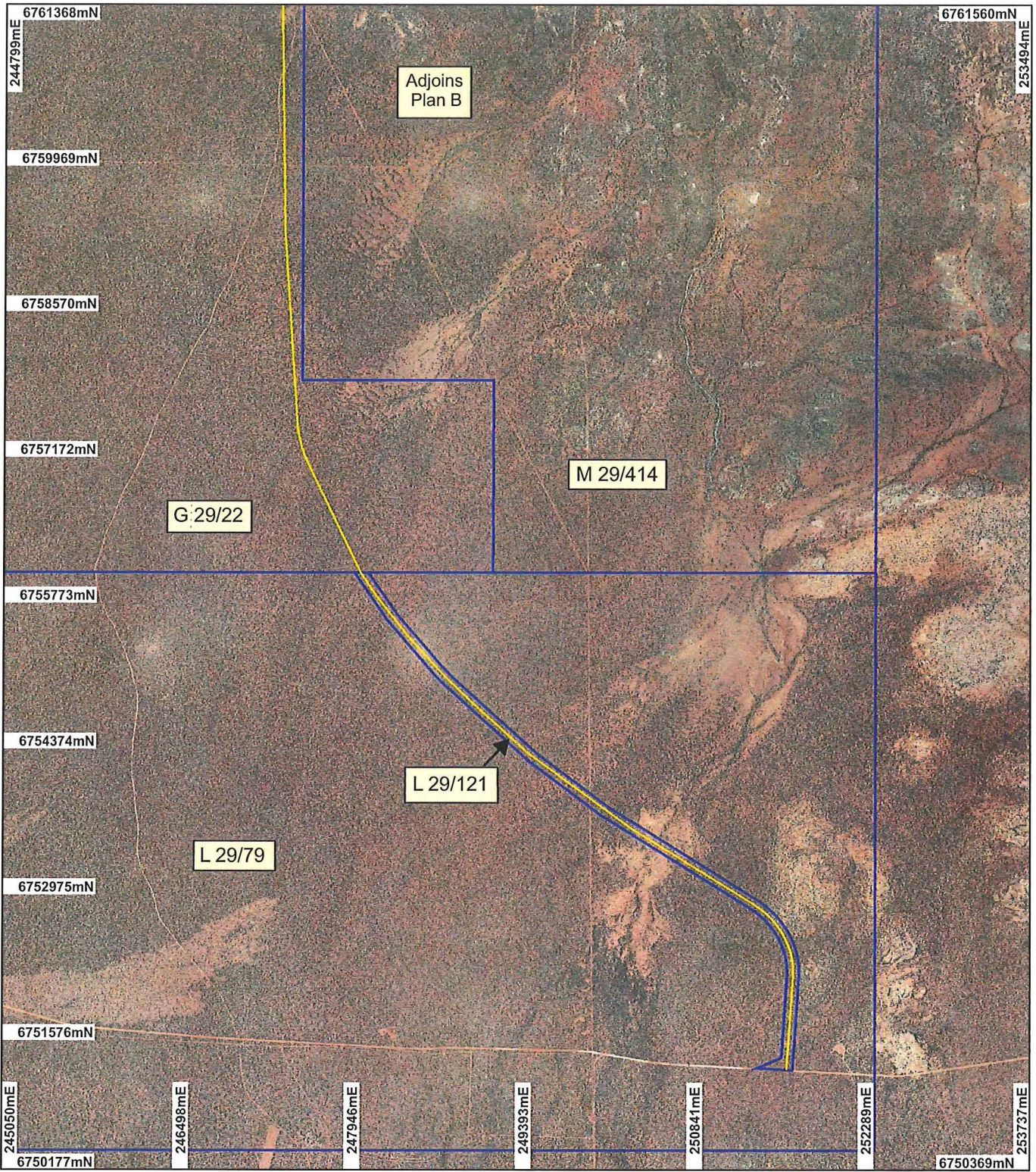
STEVE TANTALA
Officer with delegated authority under Section 20 of
the Environmental Protection Act 1986

Information derived from this map should be
confirmed with the data custodian acknowledged
by the agency acronym in the legend.



WA Crown Copyright 2002

PLAN 5764/1C



LEGEND

- Mining Tenements
 - Clearing Instruments
 - Areas Approved to Clear
- Mount Mason 1.4m
Orthomosaic - Landgate
2003



0 1.5 km

Scale 1:50000

(Approximate when reproduced at A4)

Geocentric Datum Australia 1994

Note: the data in this map have not been projected. This may result in geometric distortion or measurement inaccuracies.

..... Date 17/10/13

STEVE TANTALA

Officer with delegated authority under Section 20 of the Environmental Protection Act 1986

Information derived from this map should be confirmed with the data custodian acknowledged by the agency acronym in the legend.



WA Crown Copyright 2002