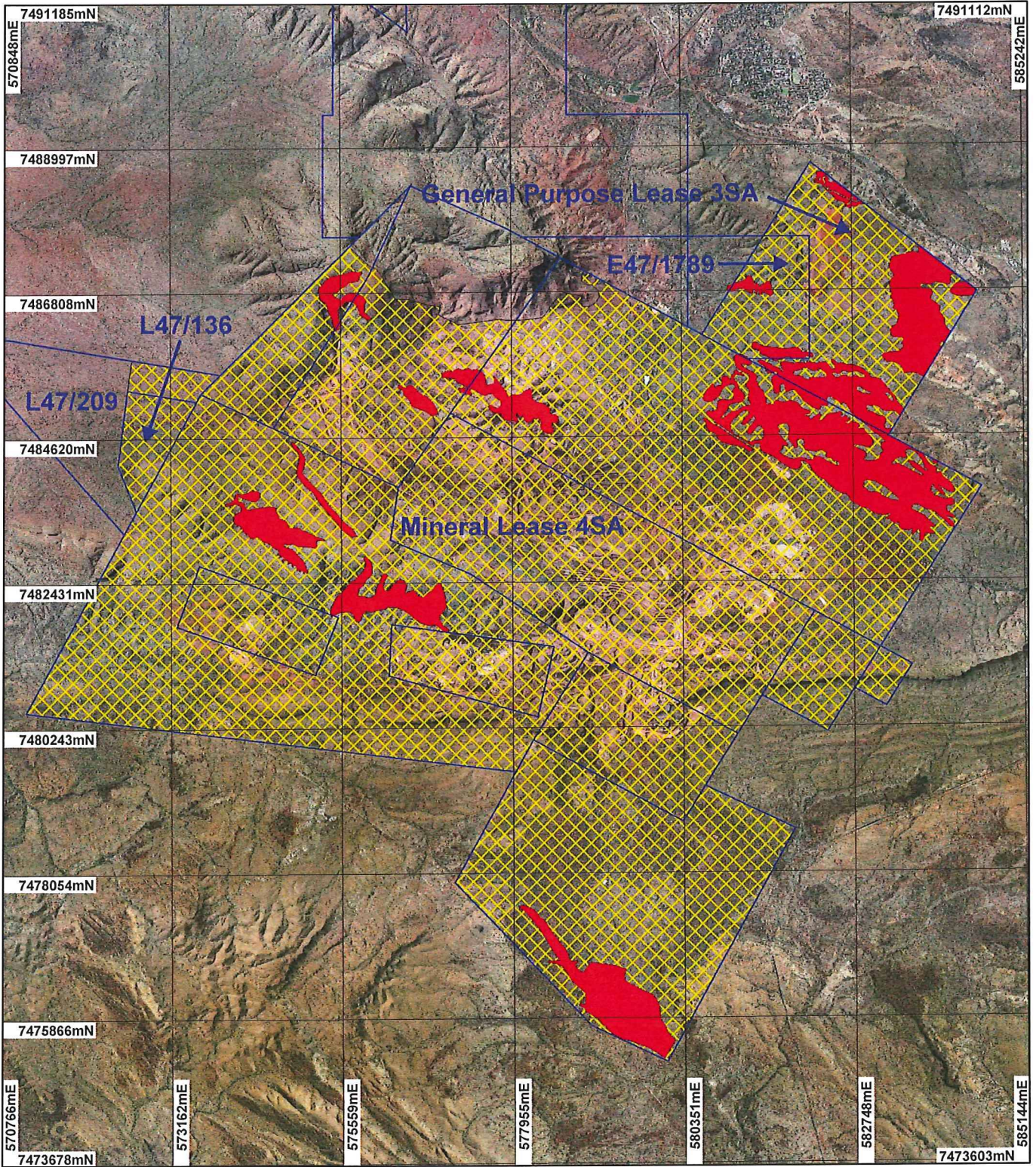
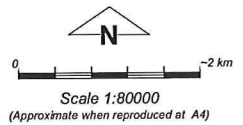


# PLAN 5795/2



## LEGEND

- |   |   |
|---|---|
| <ul style="list-style-type: none"> <li>Clearing Instruments</li> <li> <span style="display: inline-block; width: 15px; height: 10px; border: 1px solid black; background-color: yellow; border-style: dashed;"></span> Areas Approved to Clear                 </li> <li> <span style="display: inline-block; width: 15px; height: 10px; background-color: red; border: 1px solid black;"></span> Clearing Instruments_1                 </li> <li> <span style="display: inline-block; width: 15px; height: 10px; background-color: red; border: 1px solid black;"></span> Areas Subject to Conditions                 </li> </ul> | <ul style="list-style-type: none"> <li> <span style="display: inline-block; width: 15px; height: 10px; border: 1px solid blue;"></span> Mining Tenements                 </li> <li>                     Mount Lionel 50cm<br/>                     Orthomosaic - Landgate<br/>                     2004                 </li> </ul> |
|---|---|



Geocentric Datum Australia 1994

Note: the data in this map have not been projected. This may result in geometric distortion or measurement inaccuracies.

 Date 2/7/2

STEVE TANTALA  
 Officer with delegated authority under Section 20 of  
 the Environmental Protection Act 1986

Information derived from this map should be  
 confirmed with the data custodian acknowledged  
 by the agency acronym in the legend.

