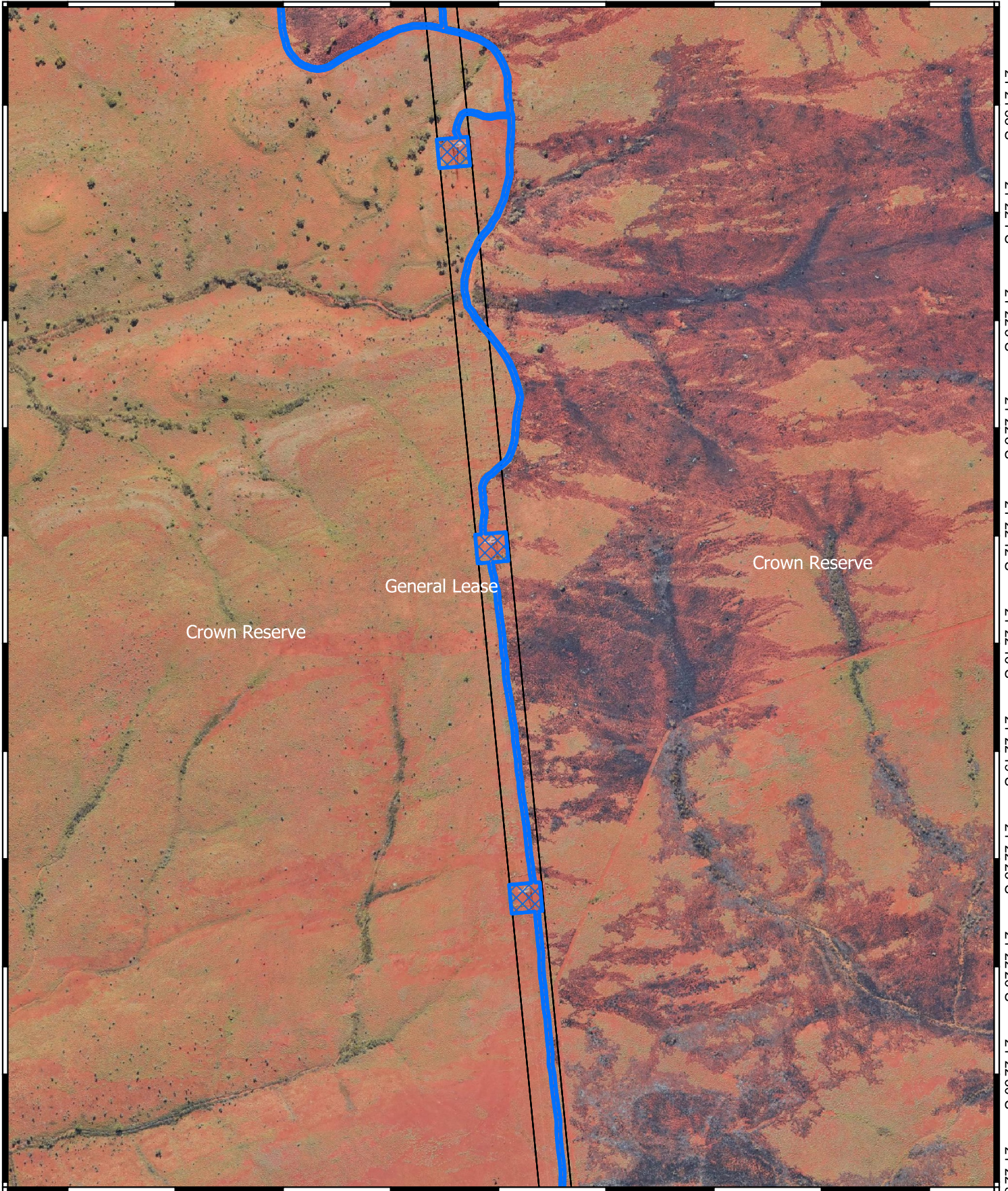


CPS 5887/4 - Map N




117°11"E 117°15"E 117°18"E 117°112"E 117°116"E 117°119"E 117°123"E 117°126"E 117°130"E

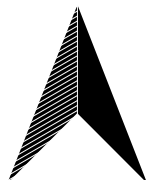
21°21'58"S
21°22'1"S
21°22'5"S
21°22'8"S
21°22'12"S
21°22'16"S
21°22'19"S
21°22'23"S
21°22'26"S
21°22'30"S
21°22'34"S

21°21'58"S
21°22'1"S
21°22'5"S
21°22'8"S
21°22'12"S
21°22'16"S
21°22'19"S
21°22'23"S
21°22'26"S
21°22'30"S
21°22'34"S



Legend

-  CPS areas applied to clear
-  Land Tenure (LGATE_226) - SLIP
-  Local Government Authorities



0 25 50 75 m



Projection: GDA 2020

1:4,000



GOVERNMENT OF
WESTERN AUSTRALIA