

CPS 5887/4 - Map P

117°3'36"E

117°4'12"E

21°24'36"S

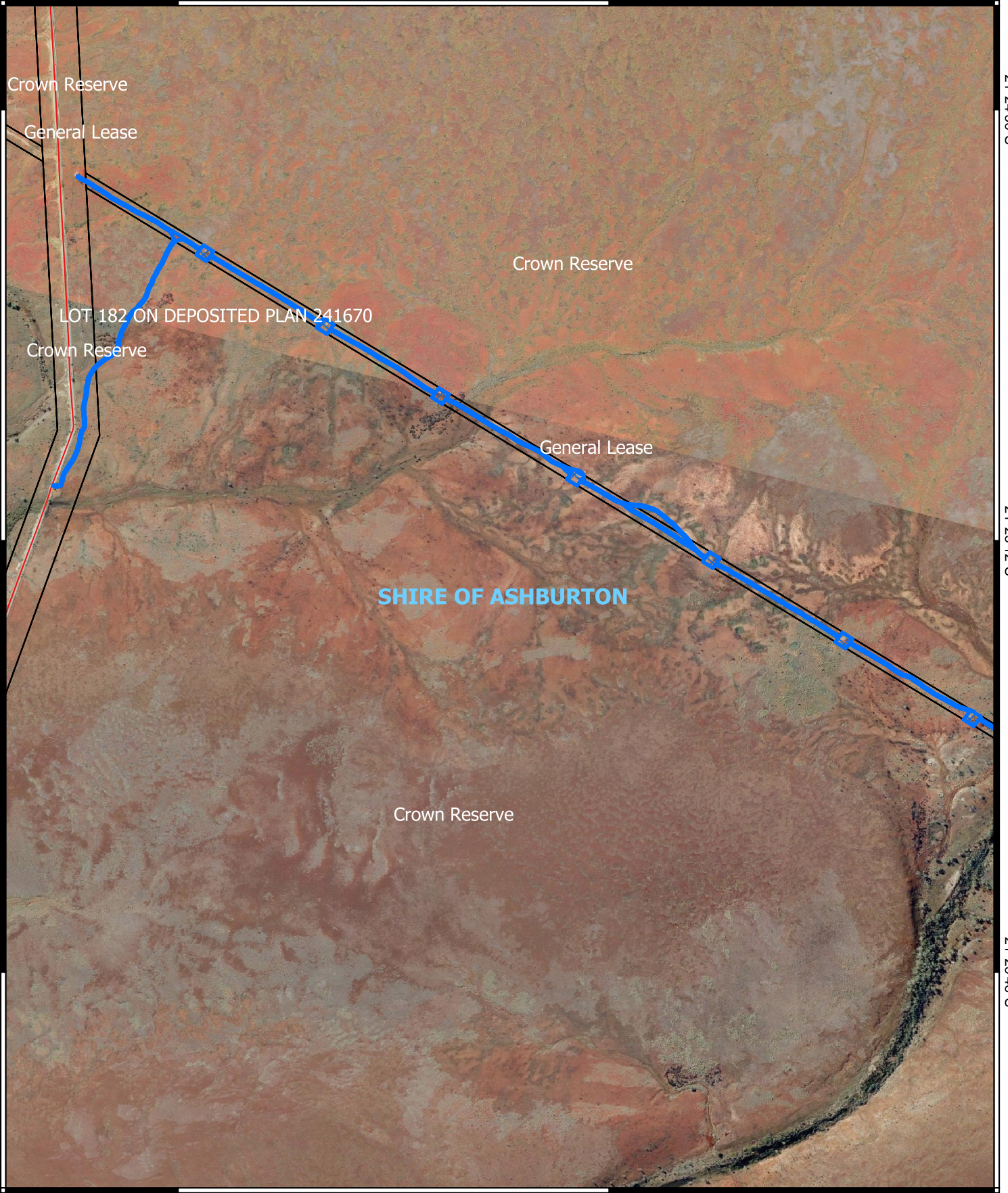
21°24'36"S

21°25'12"S

21°25'12"S

21°25'48"S


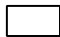

21°25'48"S



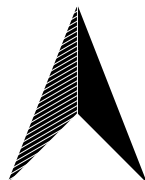
117°3'36"E

117°4'12"E

Legend

-  CPS areas applied to clear
-  Land Tenure (LGATE_226) - SLIP
-  Local Government Authorities

- Roads**
-  Minor



0 100 200 300 400 m



Projection: GDA 2020

1:10,000



GOVERNMENT OF
WESTERN AUSTRALIA