

CPS 5887/4 - Map S

117°7'48"E

117°8'24"E

21°27'0"S

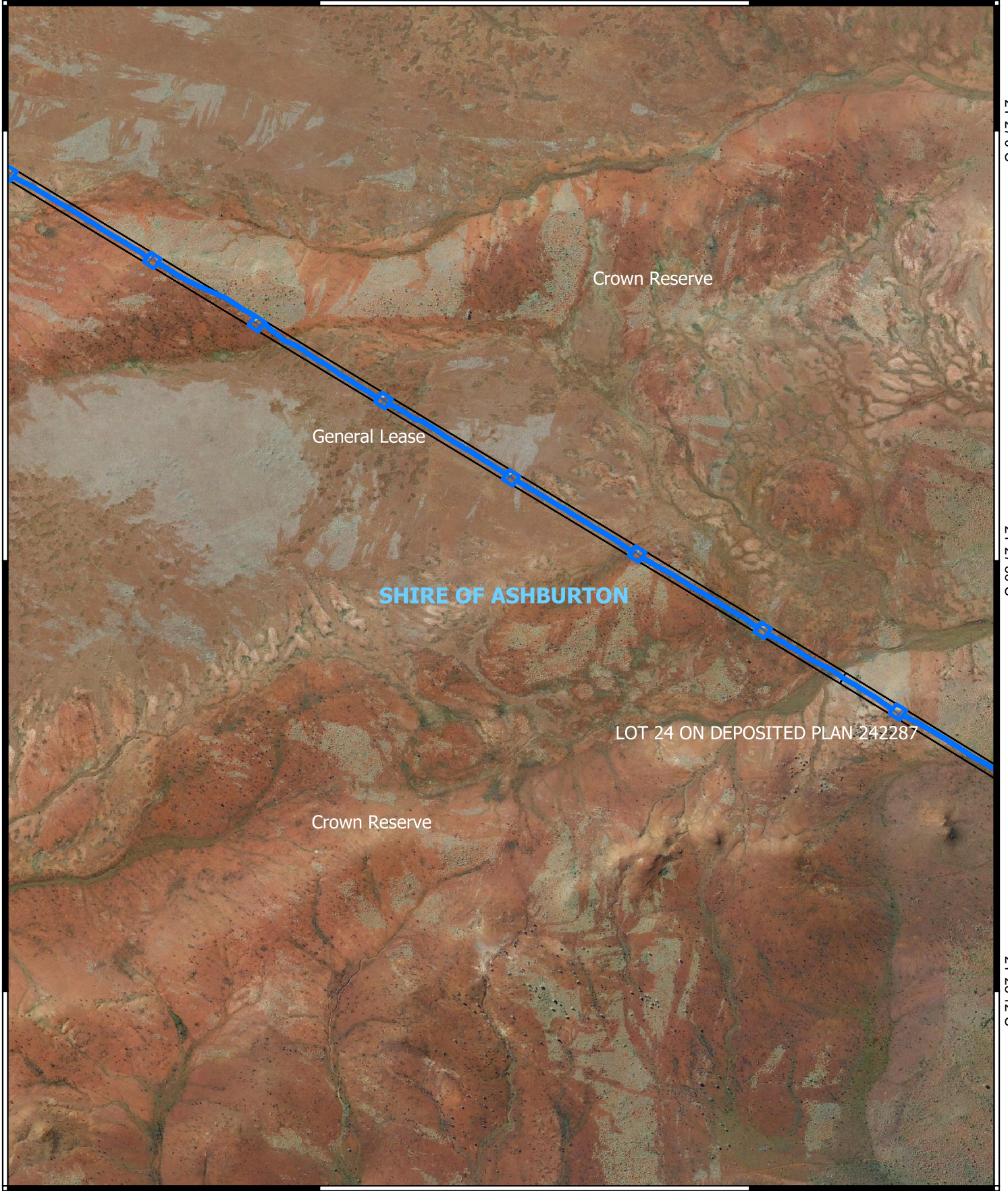
21°27'0"S

21°27'36"S

21°27'36"S

21°28'12"S




21°28'12"S

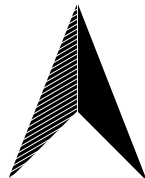


117°7'48"E

117°8'24"E

Legend

-  CPS areas applied to clear
-  Land Tenure (LGATE_226) - SLIP
-  Local Government Authorities



0 100 200 300 400 m



Projection: GDA 2020

1:10,000



GOVERNMENT OF
WESTERN AUSTRALIA