

CPS 5887/4 - Map U

117°10'48"E

117°11'24"E

21°28'48"S

21°28'48"S

21°29'24"S

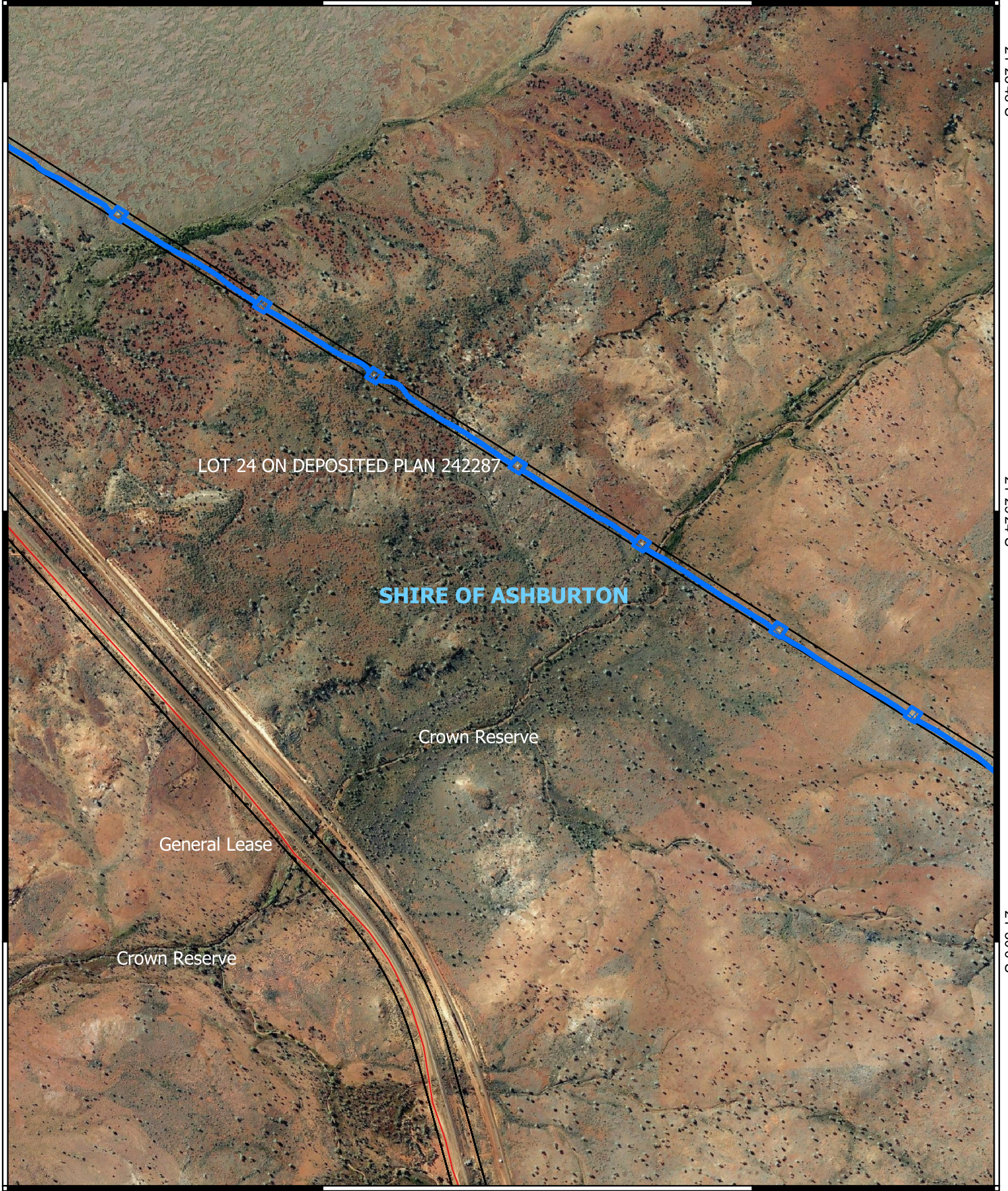
21°29'24"S

21°30'0"S


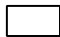

21°30'0"S

117°10'48"E

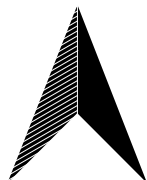
117°11'24"E



Legend

-  CPS areas applied to clear
-  Land Tenure (LGATE_226) - SLIP
-  Local Government Authorities

- Roads**
-  Minor



0 100 200 300 400 m



Projection: GDA 2020

1:10,000



GOVERNMENT OF
WESTERN AUSTRALIA