

CPS 5887/4 - Map Y

117°15'36"E

117°16'12"E

21°31'48"S

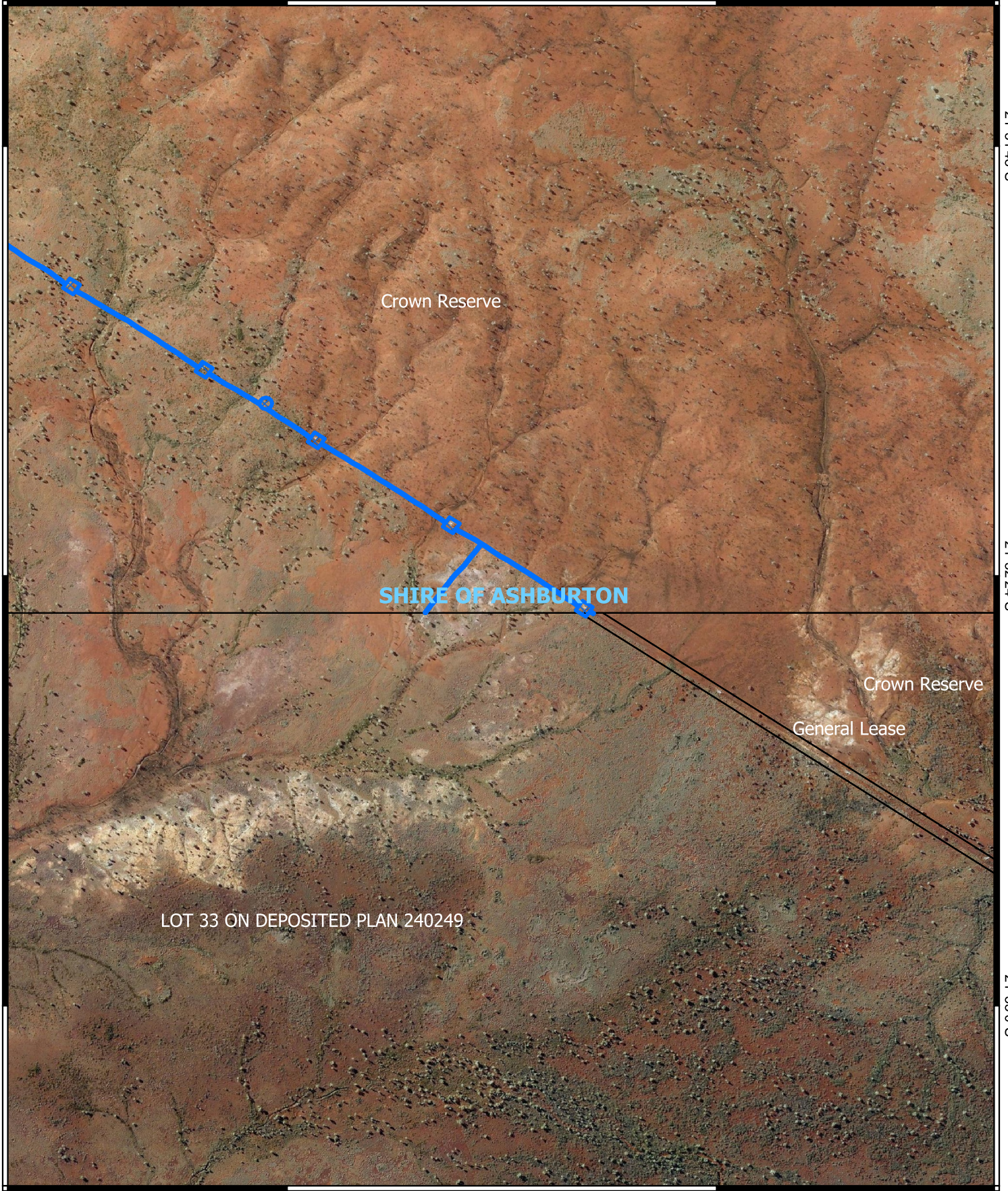
21°31'48"S

21°32'24"S

21°32'24"S

21°33'0"S


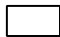

21°33'0"S

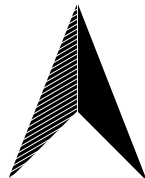


117°15'36"E

117°16'12"E

Legend

-  CPS areas applied to clear
-  Land Tenure (LGATE_226) - SLIP
-  Local Government Authorities



0 100 200 300 400 m



Projection: GDA 2020

1:10,000



GOVERNMENT OF
WESTERN AUSTRALIA