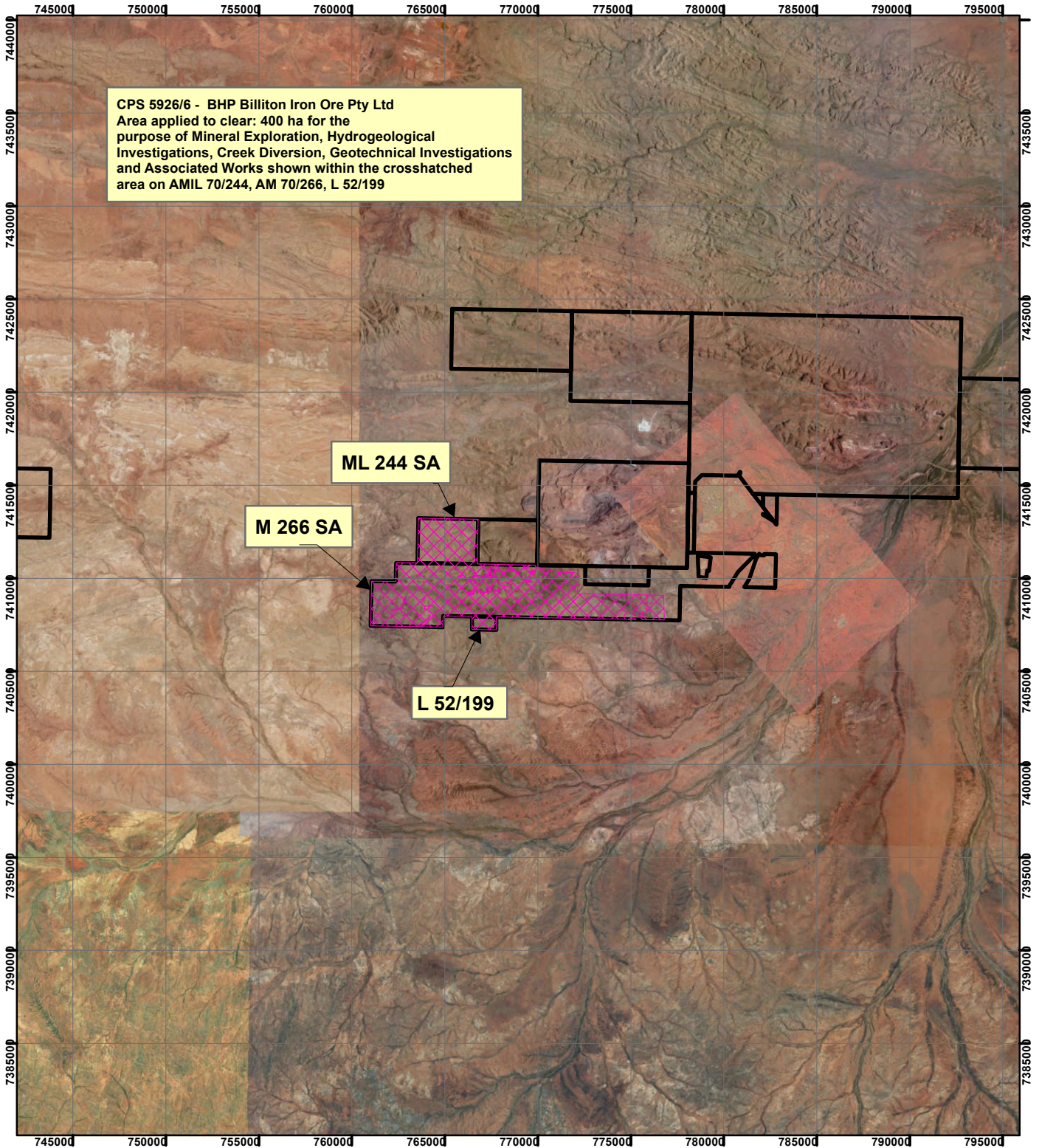
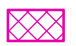

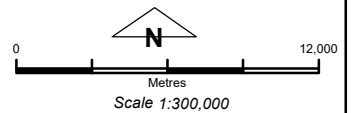


# CPS 5926/6 - BHP Billiton Iron Ore Pty Ltd



## Legend

-  Clearing Instruments
-  Mining Tenements



Geocentric Datum Australia 1994

*Note: the data in this map have not been projected. This may result in geometric distortion or measurement inaccuracies.*

..... Date .....

Officer with delegated authority under Section 20 of the Environmental Protection Act 1986

Information derived from this map should be confirmed with the data custodian acknowledged by the agency acronym in the legend.

