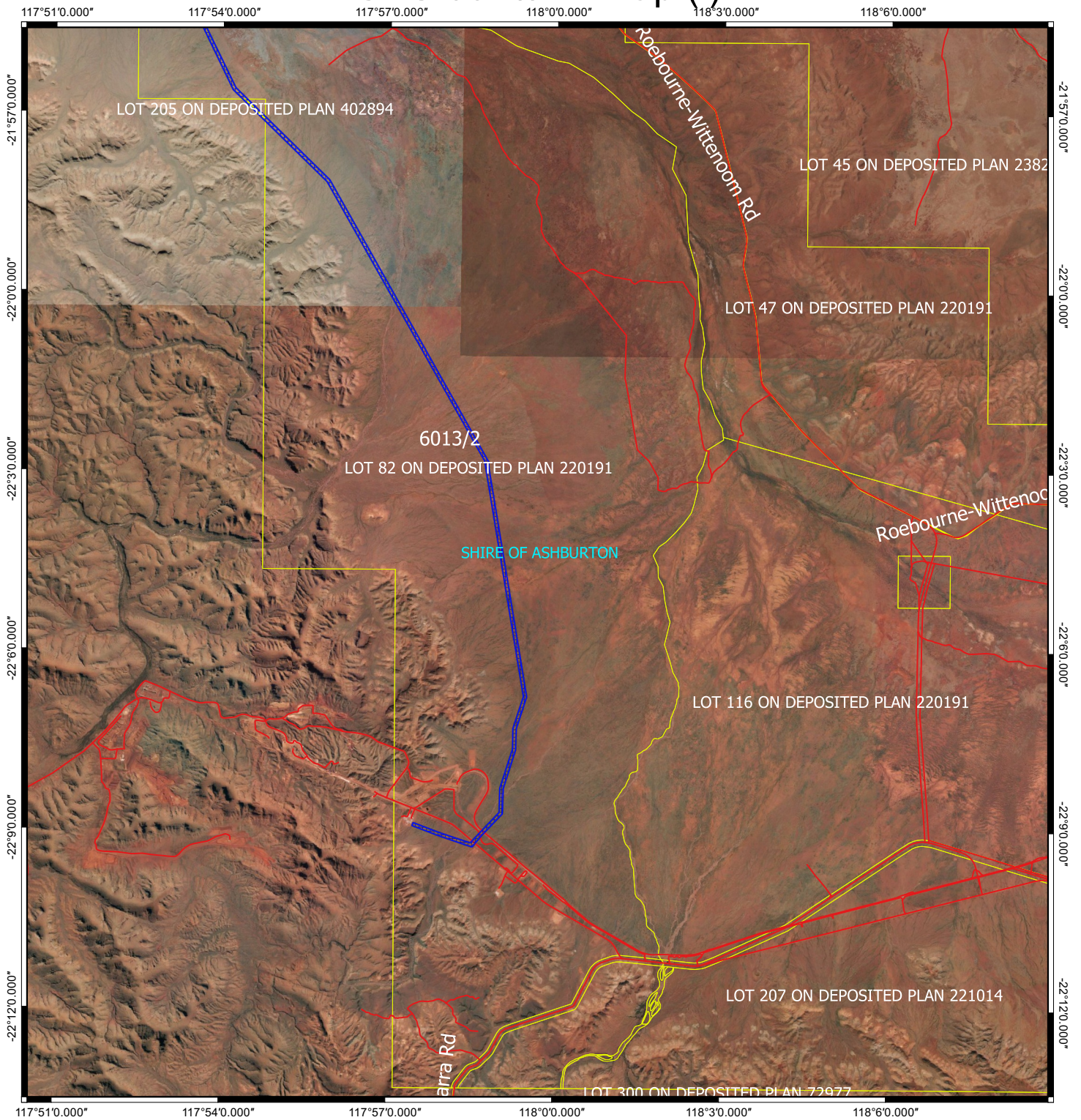






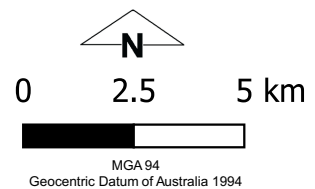
CPS 6013/2 - Map (i)



Legend

-  CPS areas applied to clear
-  Local Government Authorities
-  Cadastre
-  Roads

Image



Officer with delegated authority under Section 20
of the Environmental Protection Act 1986



GOVERNMENT OF
WESTERN AUSTRALIA
WA Crown Copyright 2018