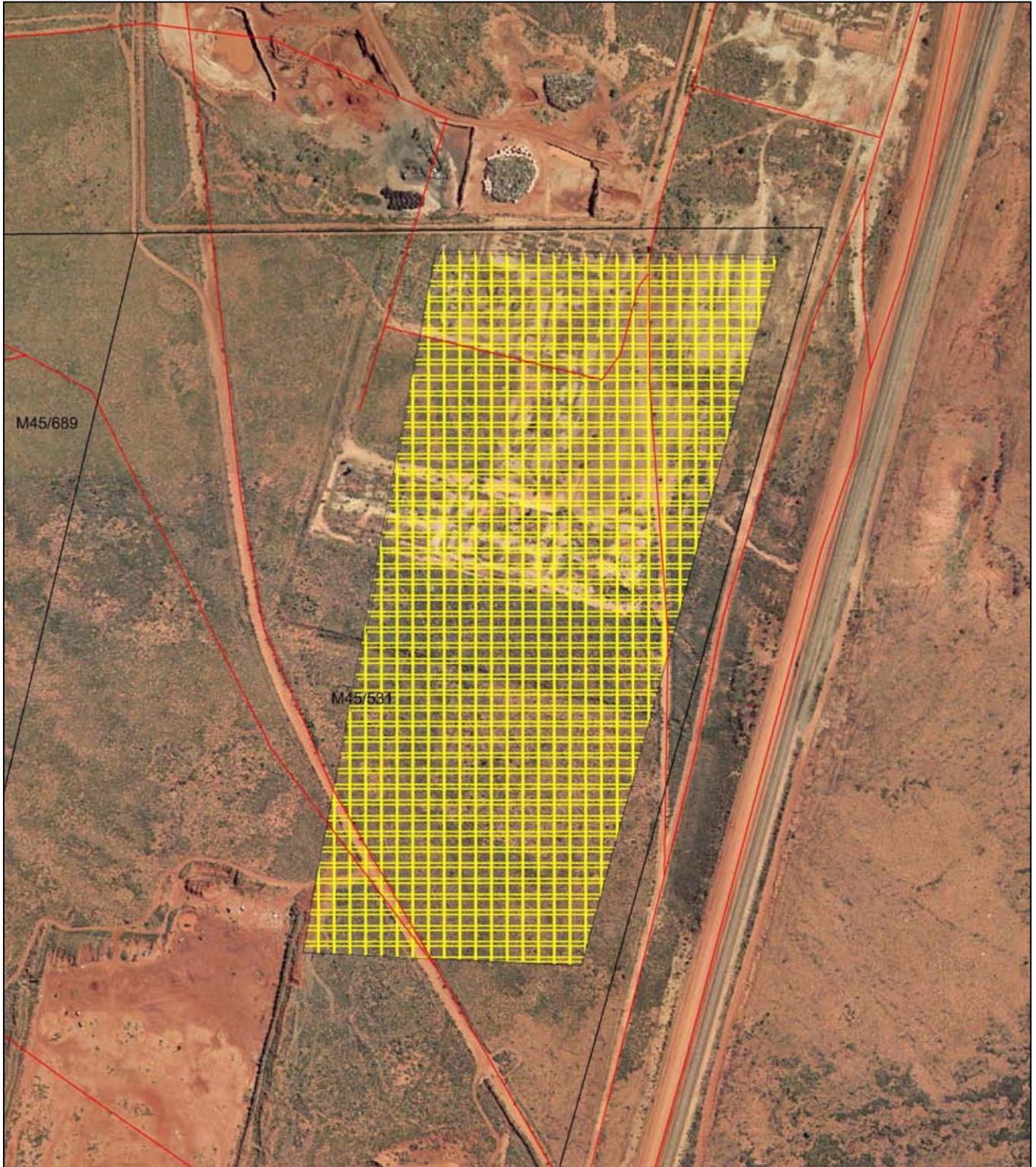



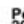


Plan607/1



LEGEND

-  Clearing Instruments - DLI 1/5/04
-  Towns - DLI 8/04
-  Mining Tenements - DOIR 4/11/05
-  Port Hedland Townsite 20cm Orthomosaic - DLI 02



Scale 1:5000
 (Approximate when reproduced at A4)
 Geocentric Datum Australia 1994
 Note: the data in this map have not been projected. This may result in geometric distortion or measurement inaccuracies.

.....Date.....
 P Rosair, Director Regional Operations
 Officer with delegated authority under Section 200 of the Environmental Protection Act 1986
 Information derived from this map should be confirmed with the data custodian acknowledged by the agency acronym in the legend.

