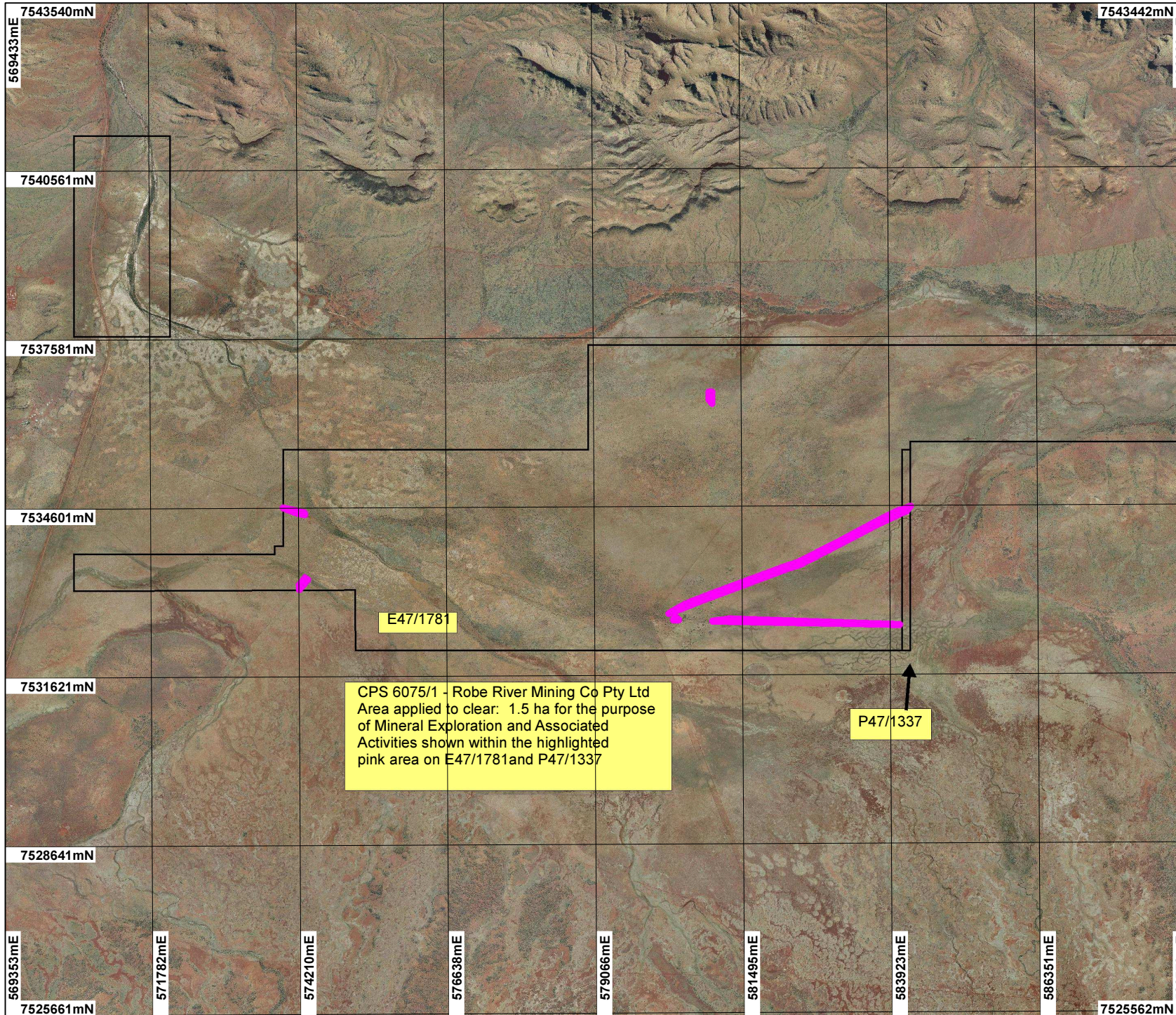






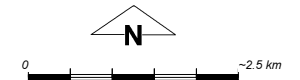
CPS 6075/1 - Robe River Mining Co Pty Ltd



CPS 6075/1 - Robe River Mining Co Pty Ltd
 Area applied to clear: 1.5 ha for the purpose
 of Mineral Exploration and Associated
 Activities shown within the highlighted
 pink area on E47/1781 and P47/1337

LEGEND

-  Mining Tenements
-  Clearing Instruments
-  Areas Applied to Clear
-  Mcrae 50cm Orthomosaic - Landgate 2004



Scale 1:90000
 (Approximate when reproduced at A4)

Geocentric Datum Australia 1994

Note: the data in this map have not been projected. This may result in geometric distortion or measurement inaccuracies.

..... Date

Officer with delegated authority under Section 20 of the Environmental Protection Act 1986

Information derived from this map should be confirmed with the data custodian acknowledged by the agency acronym in the legend.



WESTERN AUSTRALIA
 WA Crown Copyright 2002