

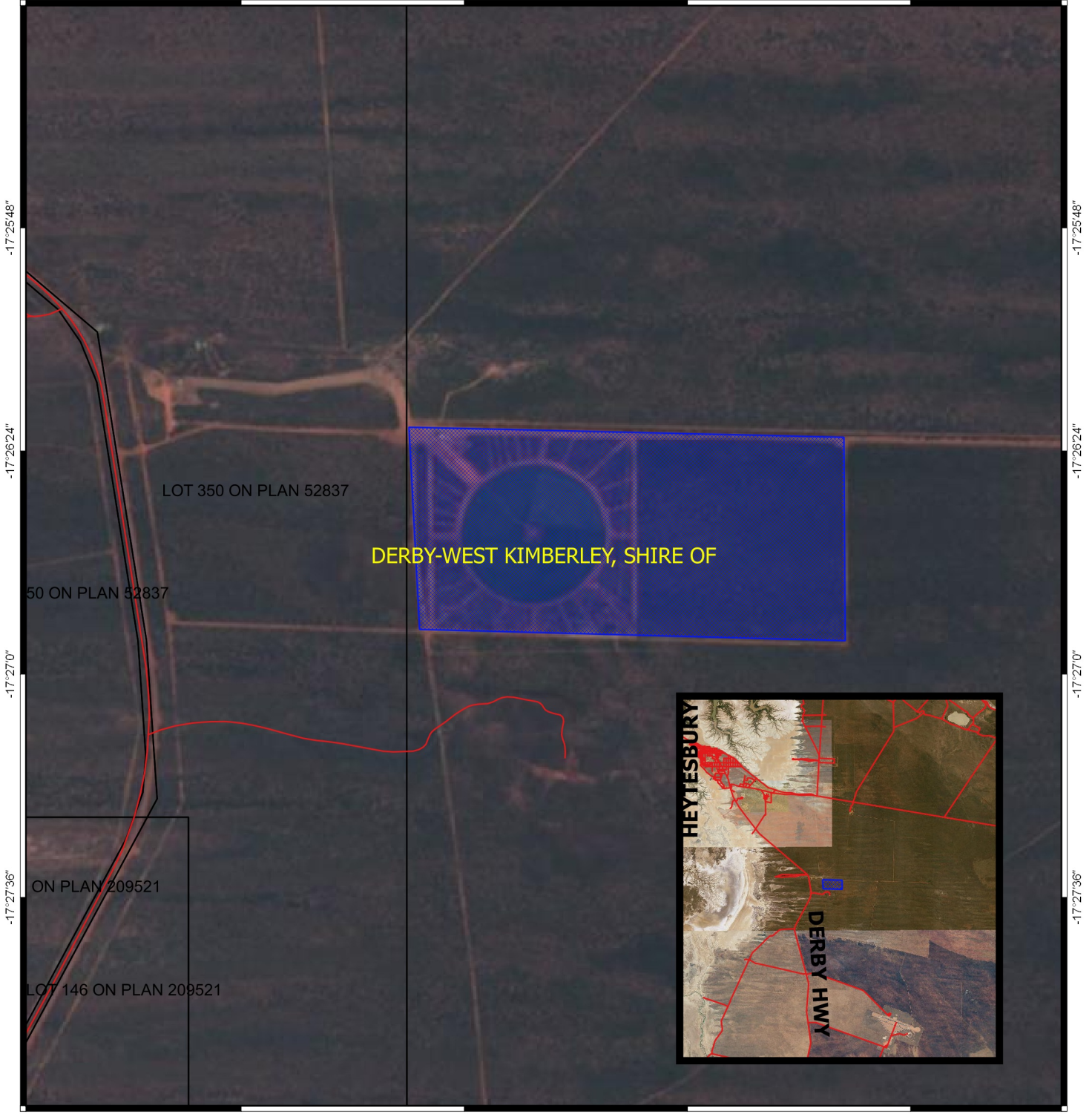
CPS 6084/4 - Map

123°45'0"

123°45'36"

123°46'12"

123°46'48"



-17°25'48"

-17°26'24"

-17°27'0"

-17°27'36"

-17°25'48"

-17°26'24"

-17°27'0"

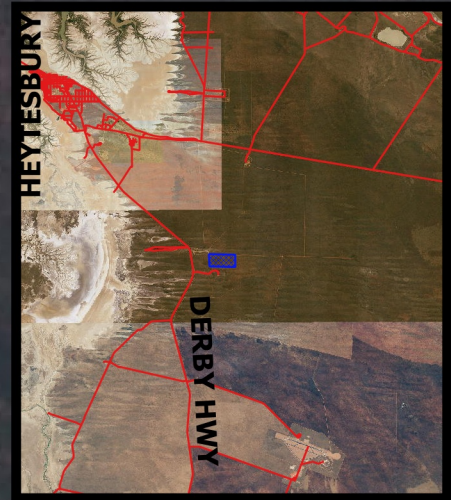
-17°27'36"

123°45'0"

123°45'36"

123°46'12"

123°46'48"



Legend

 Area applied to clear

 Roads

 LGA

 Cadastre

Virtual Mosaic (LGATE-V001)



1:22,501

MGA 94

Geocentric Datum of Australia 1994

.....Date.....

Officer with delegated authority under Section 20
of the Environmental Protection Act 1986



GOVERNMENT OF
WESTERN AUSTRALIA