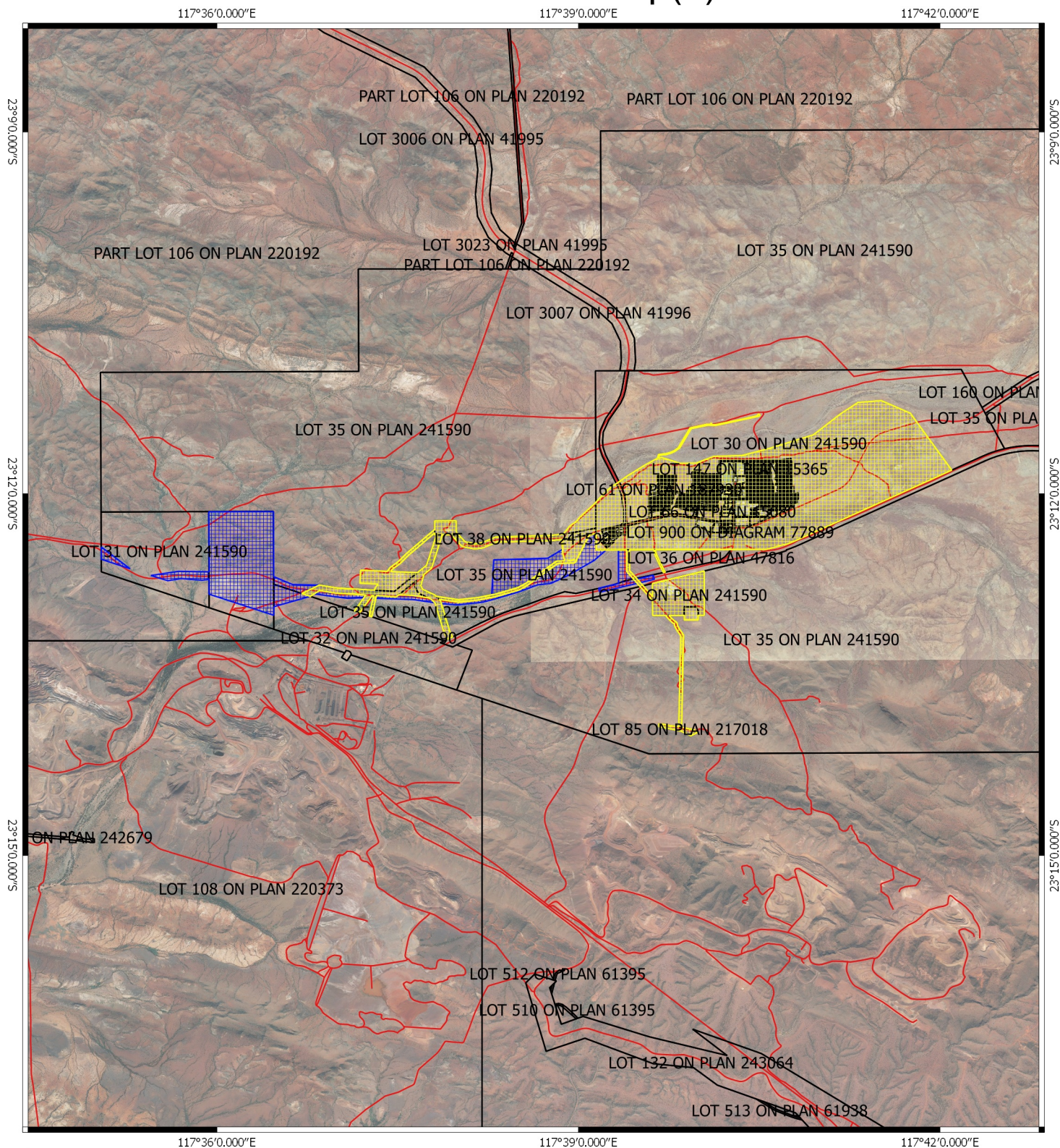


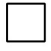
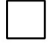



# CPS 6110/4 - Map(n)



## Legend

-  Areas approved to clear
-  Areas applied to clear
-  Local Government Authority
-  cadastre
-  Roads

Virtual Mosaic - WA Now



MGA 94  
Geocentric Datum of Australia 1994

Officer with delegated authority under Section 20  
of the Environmental Protection Act 1986



GOVERNMENT OF  
WESTERN AUSTRALIA