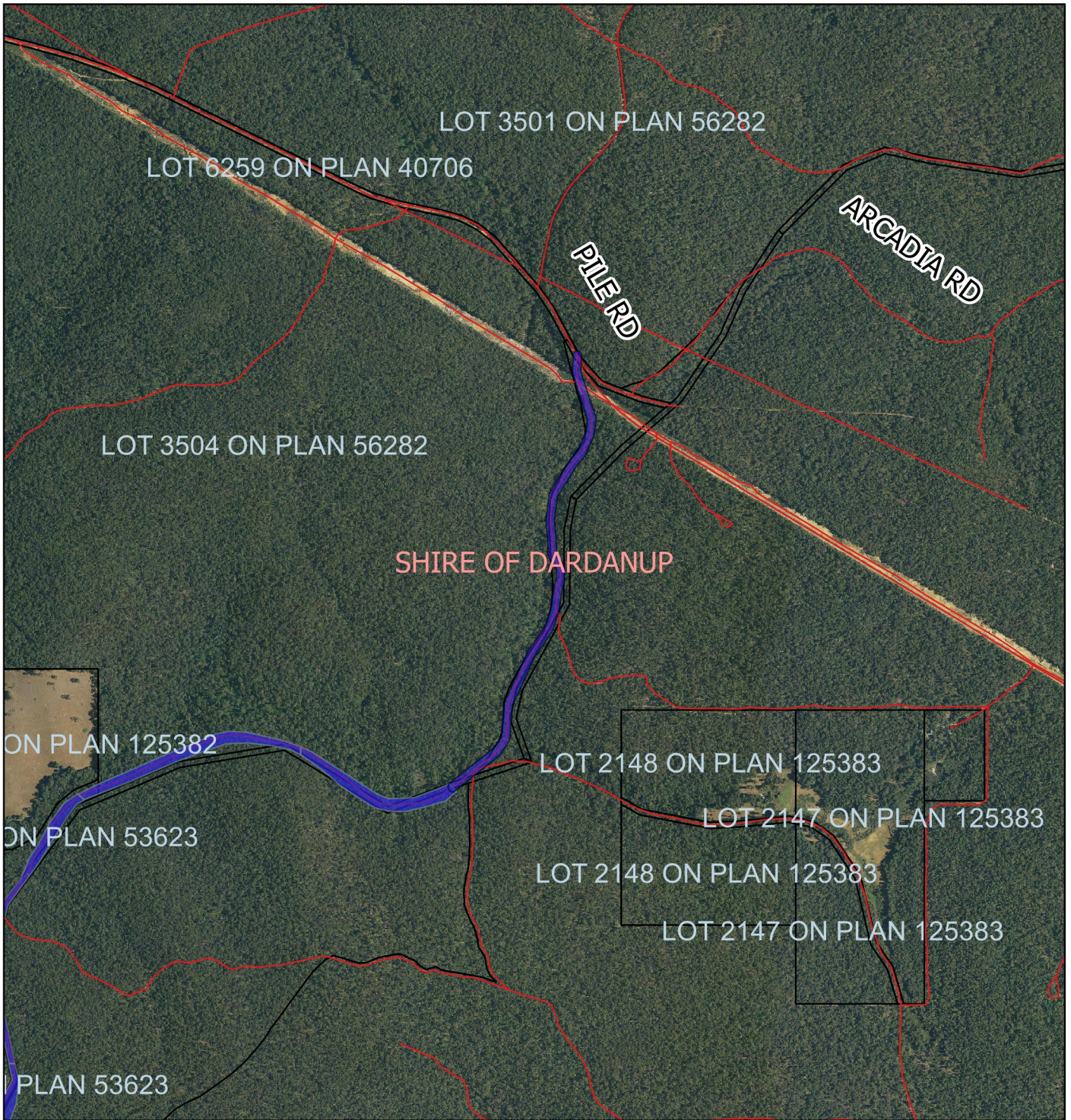



# CPS 6149/1 - Map c



## Legend

-  Roads
-  Clearing Instruments Proposal
-  Local Govt. Authorities (LGA)
-  Cadastre
-  Virtual Mosaic (LGATE-V001)



1:23,072

MGA 94  
Geocentric Datum of Australia 1994

.....Date.....

Officer with delegated authority under Section 20  
of the Environmental Protection Act 1986



GOVERNMENT OF  
WESTERN AUSTRALIA