

Plan 6181/2

115°2.400'E

115°2.520'E

115°2.640'E

115°2.760'E

115°2.880'E

30°16.800'S

30°16.920'S

30°17.040'S

30°17.160'S

30°17.280'S

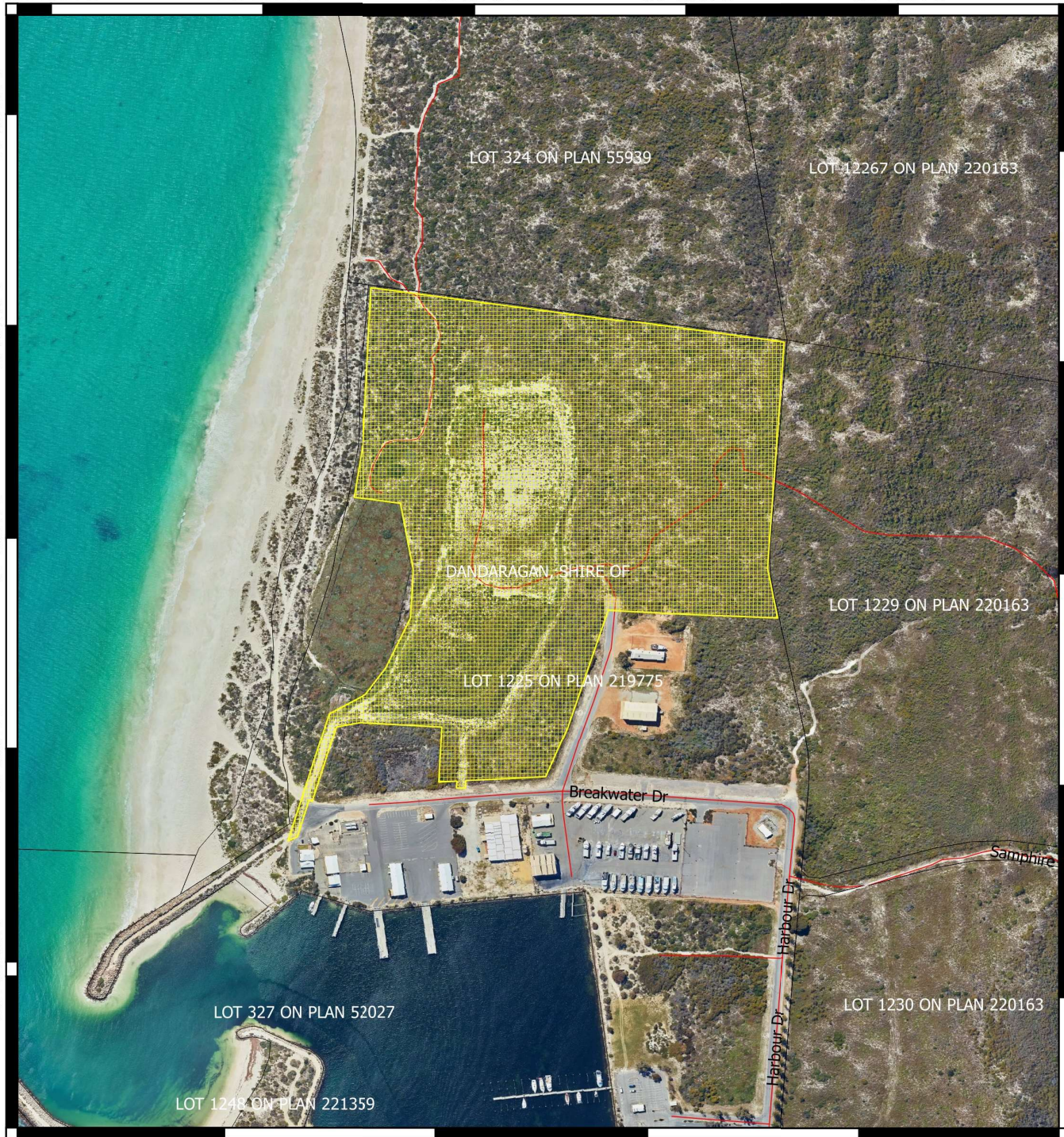
30°16.800'S

30°16.920'S

30°17.040'S

30°17.160'S

30°17.280'S




115°2.520'E

115°2.640'E

115°2.760'E

115°2.880'E

Legend

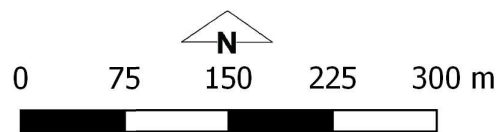
 CPS areas approved to clear base layers

 Cadastre

 Road Centrelines

 Local Government Authorities

Image



MGA 94
Geocentric Datum of Australia 1994

R. Mincham
Ryan Mincham
2019.06.21
14:30:10 +08'00'

Officer delegated under Section 20 of the Environmental Protection Act 1986



GOVERNMENT OF
WESTERN AUSTRALIA