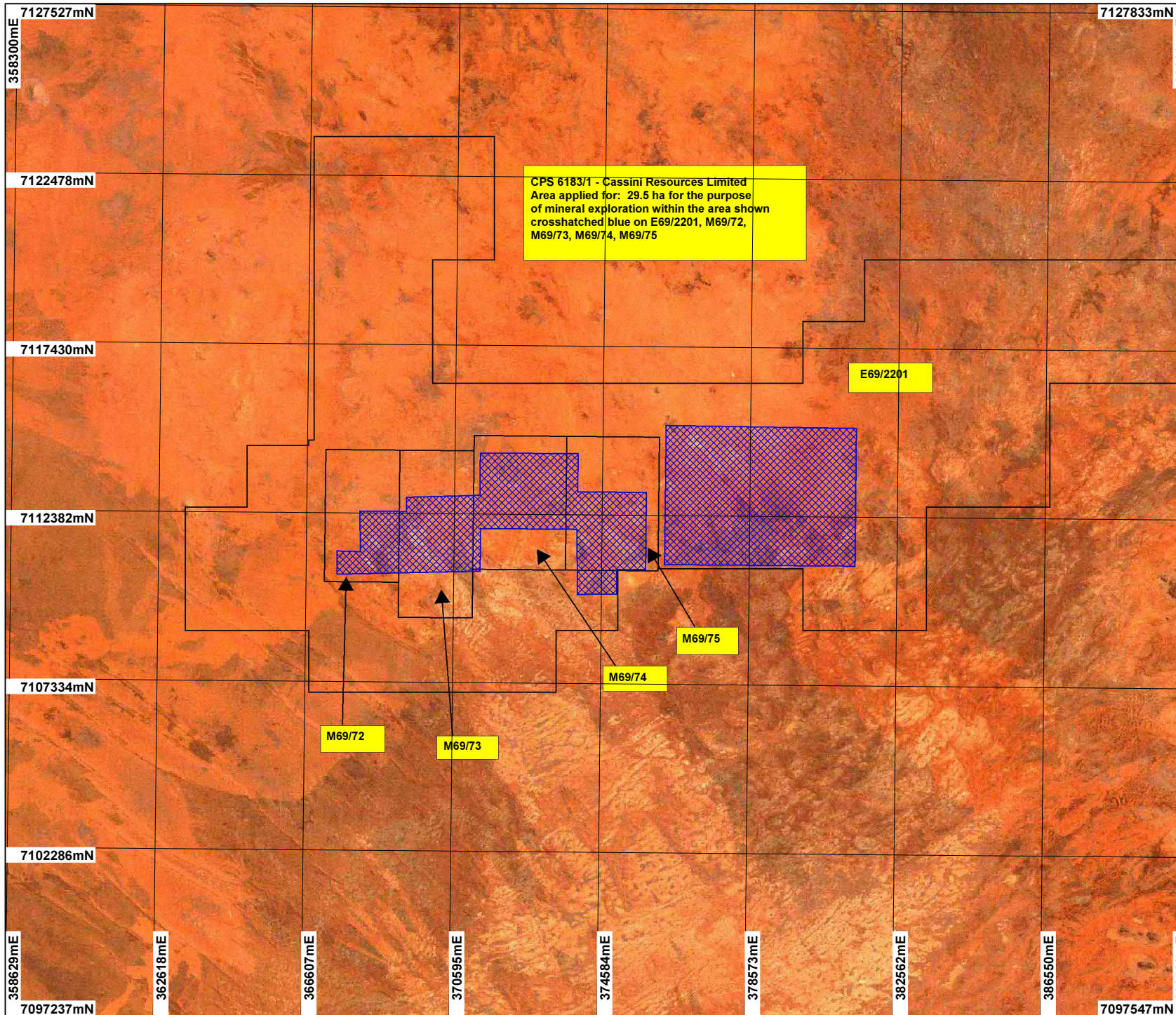


CPS 6183/1 - Cassini Resources Limited

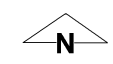


CPS 6183/1 - Cassini Resources Limited
 Area applied for: 29.5 ha for the purpose
 of mineral exploration within the area shown
 crosshatched blue on E69/2201, M69/72,
 M69/73, M69/74, M69/75

LEGEND

- Mining Tenements
- Clearing Instruments


Western Australia ETM 25m 543 - AGO 2004


 Scale 1:150000
 (Approximate when reproduced at A4)
 Geocentric Datum Australia 1994
 Note: the data in this map have not been projected. This may result in geometric distortion or measurement inaccuracies.

..... Date

Officer with delegated authority under Section 20 of the Environmental Protection Act 1986

Information derived from this map should be confirmed with the data custodian acknowledged by the agency acronym in the legend.


 WESTERN AUSTRALIA
 WA Crown Copyright 2002