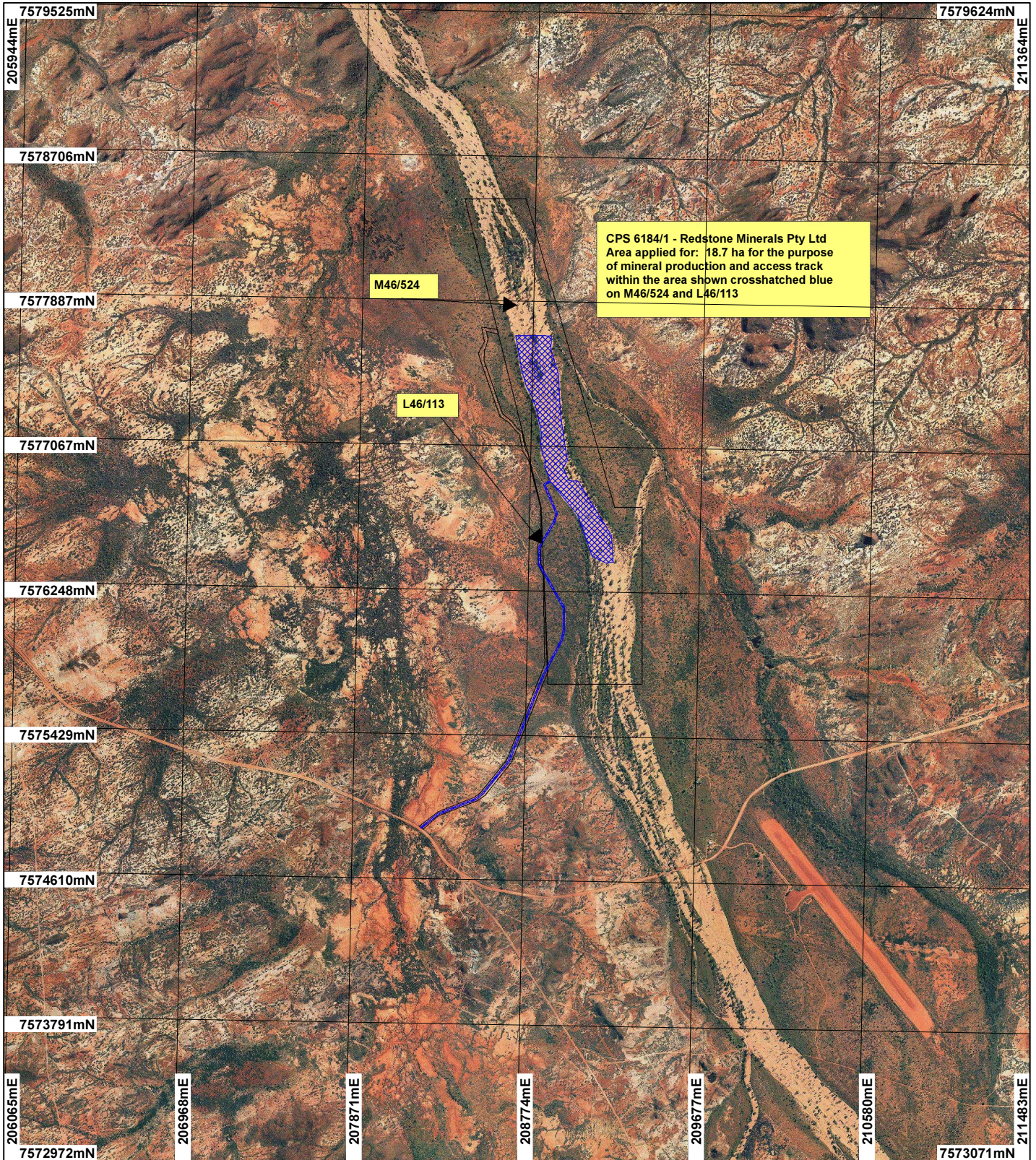


# CPS 6184/1 - Redstone Minerals Pty Ltd



CPS 6184/1 - Redstone Minerals Pty Ltd  
 Area applied for: 18.7 ha for the purpose  
 of mineral production and access track  
 within the area shown crosshatched blue  
 on M46/524 and L46/113

## LEGEND

-  Mining Tenements
-  Clearing Instruments
-  Nullagine 80cm Orthomosaic - Landgate 2007



Scale 1:30000  
 (Approximate when reproduced at A4)

Geocentric Datum Australia 1994

Note: the data in this map have not been projected. This may result in geometric distortion or measurement inaccuracies.

..... Date .....

Officer with delegated authority under Section 20 of the Environmental Protection Act 1986

Information derived from this map should be confirmed with the data custodian acknowledged by the agency acronym in the legend.

