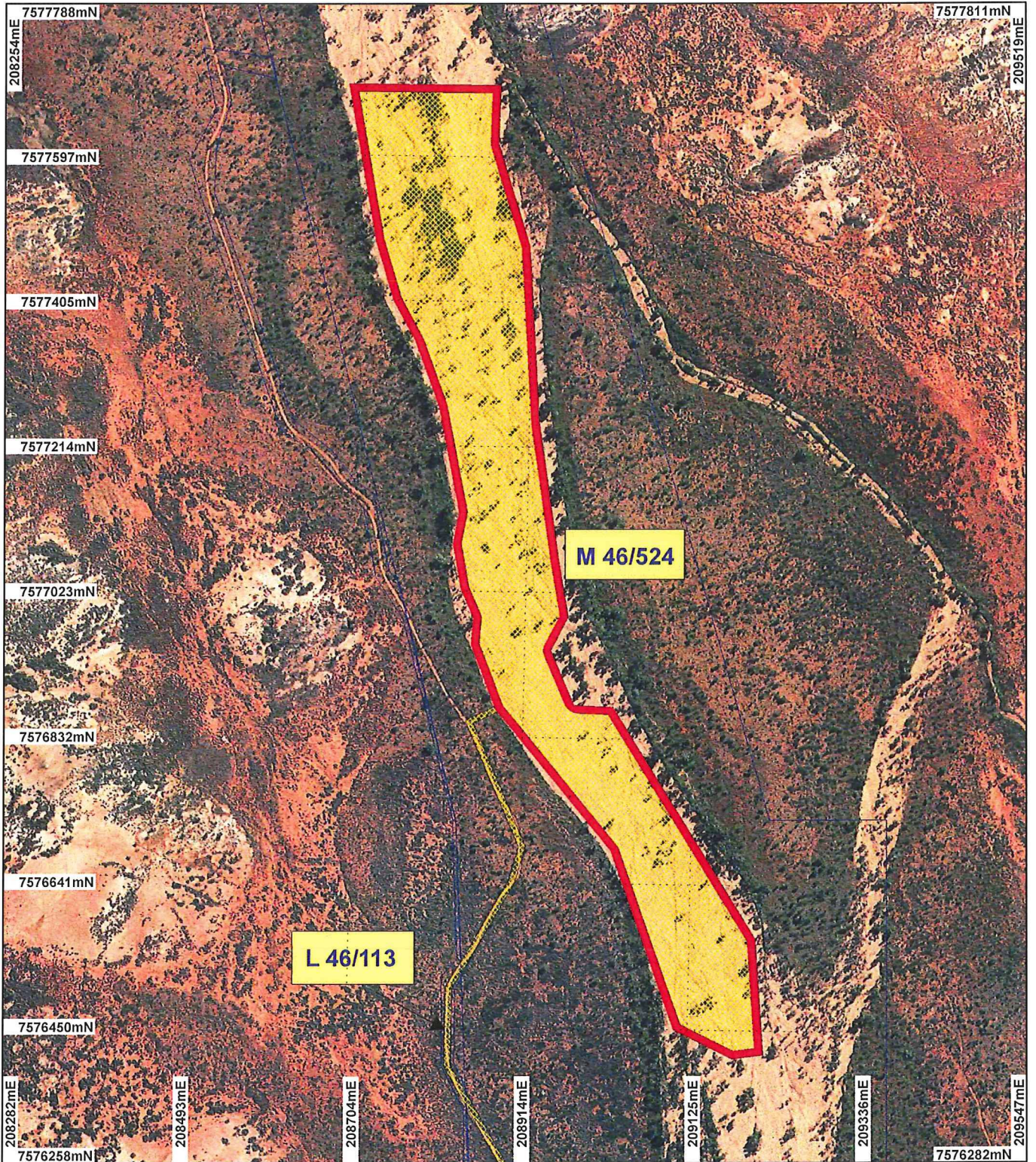
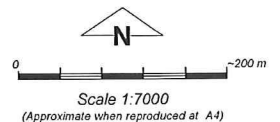


# PLAN 6184/1A



## LEGEND

- |   |  |
|---|--|
| <span style="border: 1px solid black; display: inline-block; width: 10px; height: 10px;"></span> Mining Tenements         | <b>Clearing Instruments_1</b>  |
| <span style="border: 1px solid black; display: inline-block; width: 10px; height: 10px;"></span> Clearing Instruments     | <span style="border: 2px solid red; display: inline-block; width: 10px; height: 10px;"></span> Areas Subject to Conditions |
| <span style="background-color: yellow; display: inline-block; width: 10px; height: 10px;"></span> Areas Approved to Clear |  |
| Nullagine 80cm Orthomosaic - Landgate 2007  |  |



Geocentric Datum Australia 1994  
 Note: the data in this map have not been projected. This may result in geometric distortion or measurement inaccuracies.

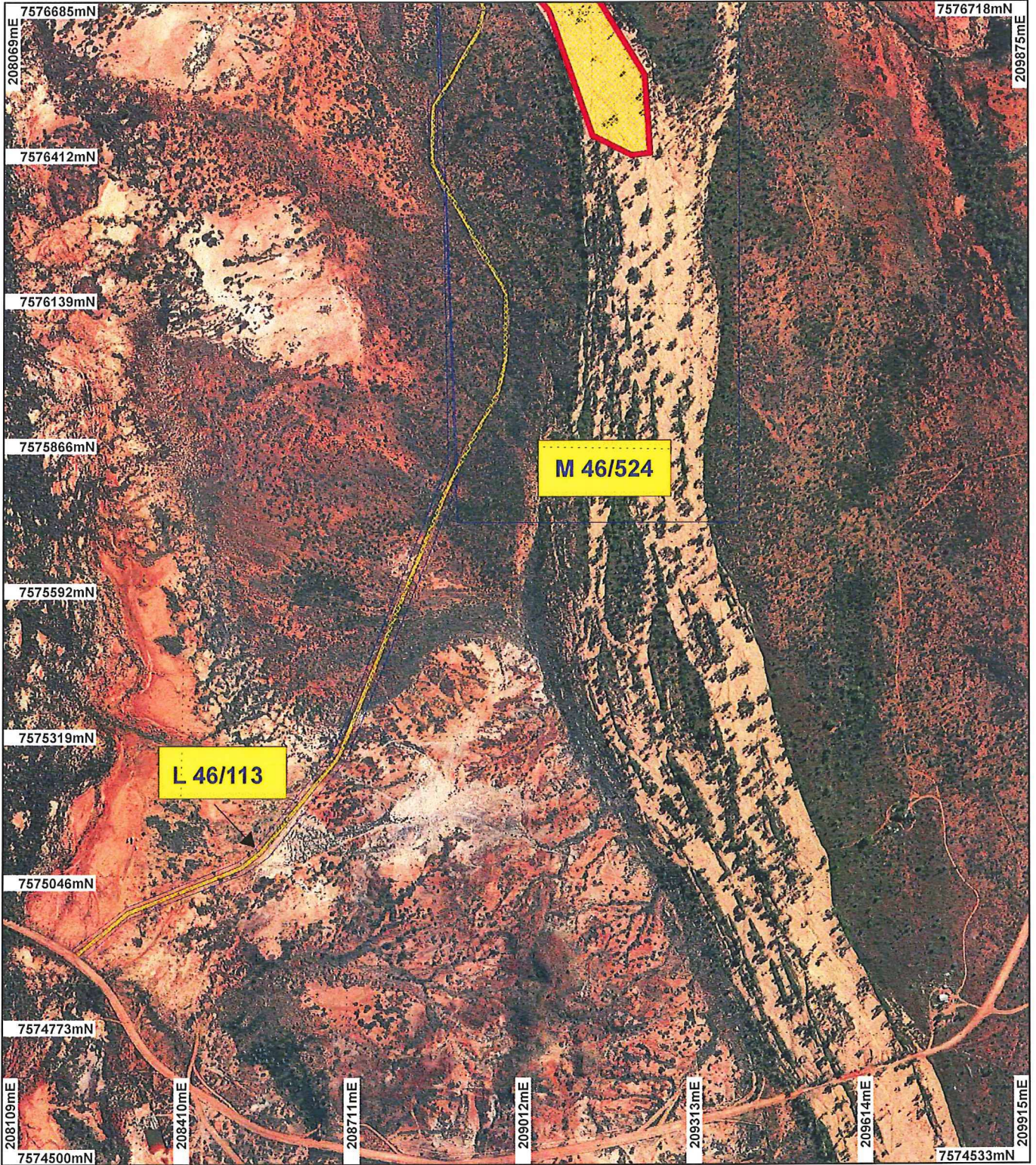
 Date 20/9/16

STEVE TANTALA  
 Officer with delegated authority under Section 20 of the Environmental Protection Act 1986

Information derived from this map should be confirmed with the data custodian acknowledged by the agency acronym in the legend.

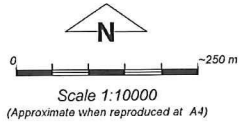


# PLAN 6184/1B



## LEGEND

- |  |                             |
|--|-----------------------------|
| Mining Tenements                           | Clearing Instruments_1      |
| Clearing Instruments                       | Areas Subject to Conditions |
| Areas Approved to Clear                    |                             |
| Nullagine 80cm Orthomosaic - Landgate 2007 |                             |



Geocentric Datum Australia 1994  
Note: the data in this map have not been projected. This may result in geometric distortion or measurement inaccuracies.

Date 25/9/14

STEVE TANTALA  
Officer with delegated authority under Section 20 of the Environmental Protection Act 1986

Information derived from this map should be confirmed with the data custodian acknowledged by the agency acronym in the legend.

