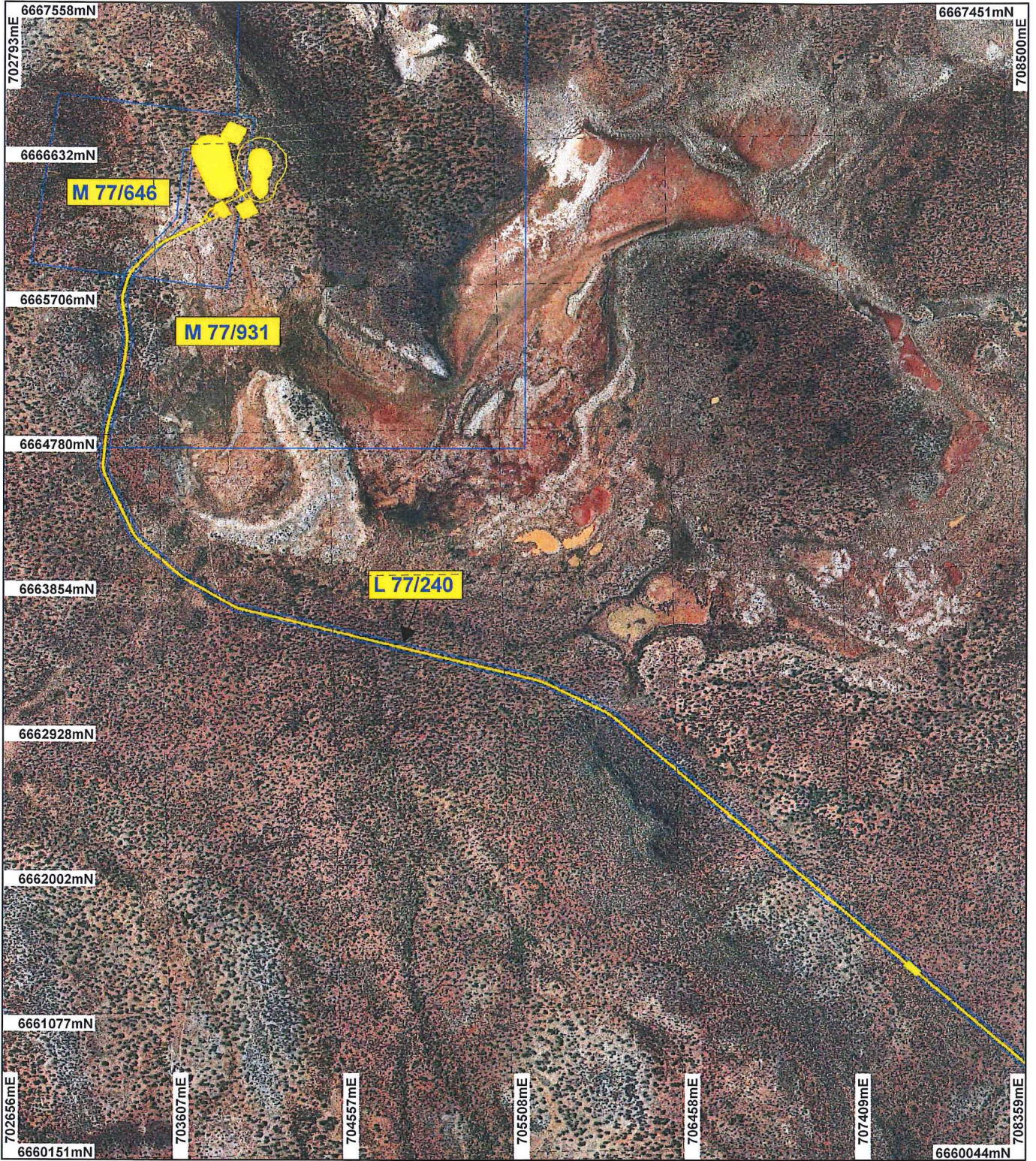


PLAN 6197/1A



LEGEND

- Mining Tenements
 - Clearing Instruments
 - Areas Approved to Clear
- Jackson 50cm Orthomosaic -
Landgate 2007



0 ~750 m

Scale 1:33000

(Approximate when reproduced at A4)

Geocentric Datum Australia 1994

Note: the data in this map have not been projected. This may result in geometric distortion or measurement inaccuracies.

Date 11/2/14

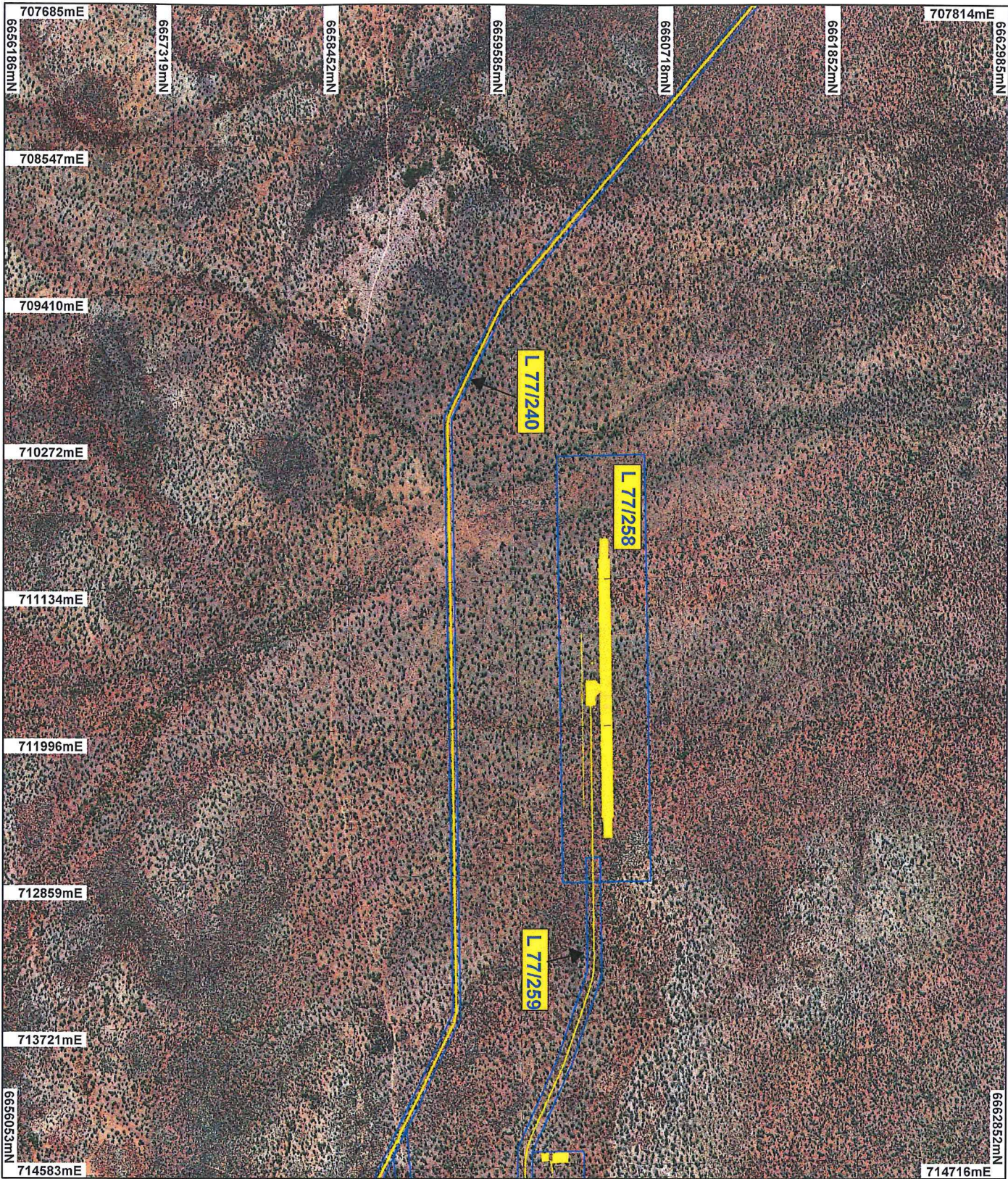
STEVE TANTALA
Officer with delegated authority under Section 20 of the Environmental Protection Act 1986

Information derived from this map should be confirmed with the data custodian acknowledged by the agency acronym in the legend.



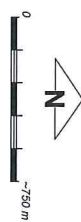
WA Crown Copyright 2002

PLAN 619711B



LEGEND

- Mining Tenements
- Clearing Instruments
- Areas Approved to Clear
- Jackson 50cm Orthomosaic - Landgate 2007



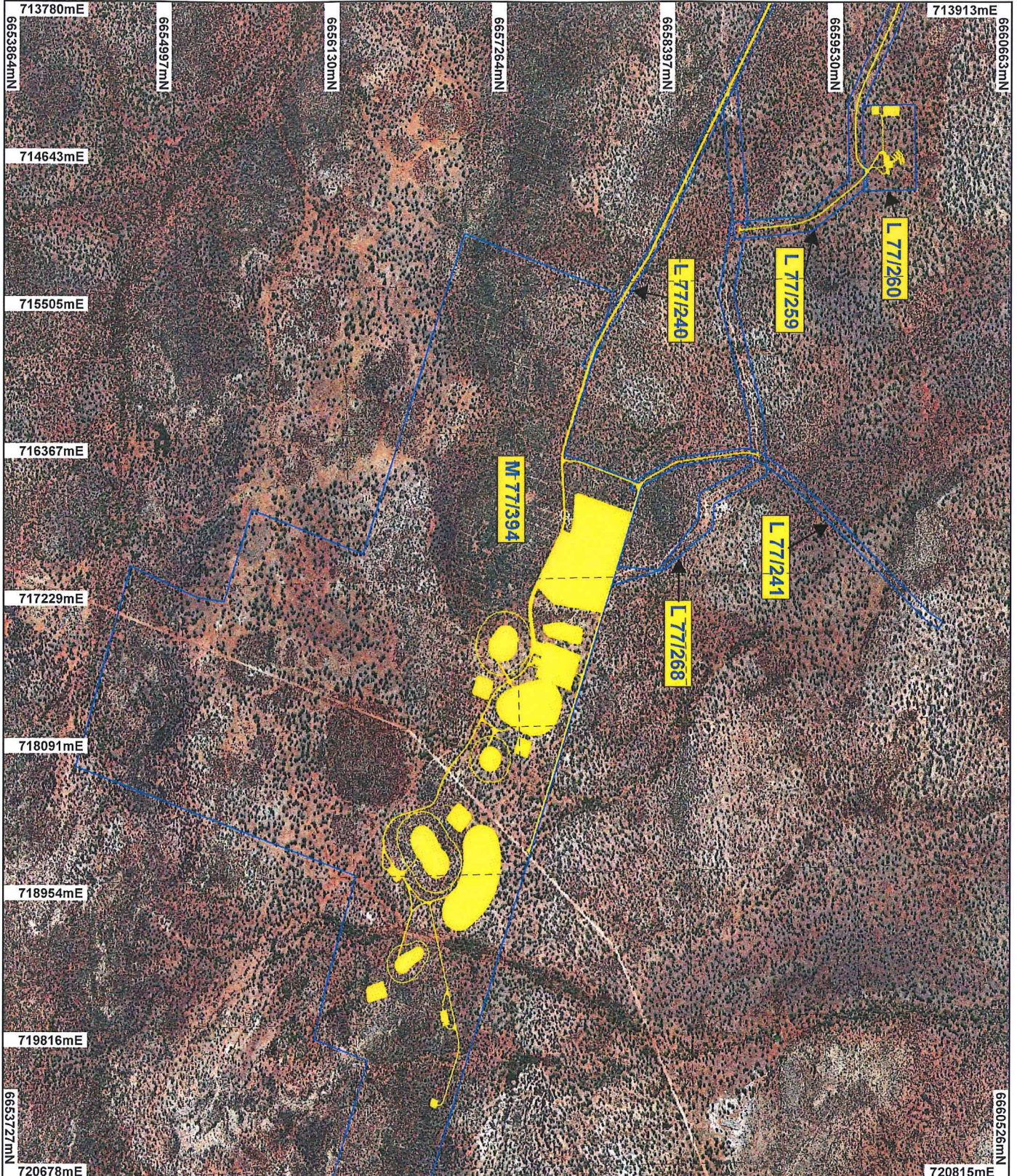
Geocentric Datum Australia 1994
 Note: The data in this map have not been projected. This may result in geometric distortion or measurement inaccuracies.

STEVE TANTALA
 Officer with delegated authority under Section 20 of the Environmental Protection Act 1986
 Information derived from this map should be confirmed with the data custodian acknowledged by the agency acronym in the legend.
 Date 11/11/2011



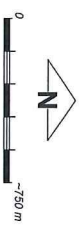
WA Crown Copyright 2002

PLAN 61971C



LEGEND

- Mining Tenements
- Clearing Instruments
- Areas Approved to Clear
- Jackson Sbcm Orthomosaic - Landgate 2007



Geocentric Datum Australia 1994
 Note: the data in this map have not been projected. This may result in geometric distortion or measurement inaccuracies.

..... Date: 11/9/10

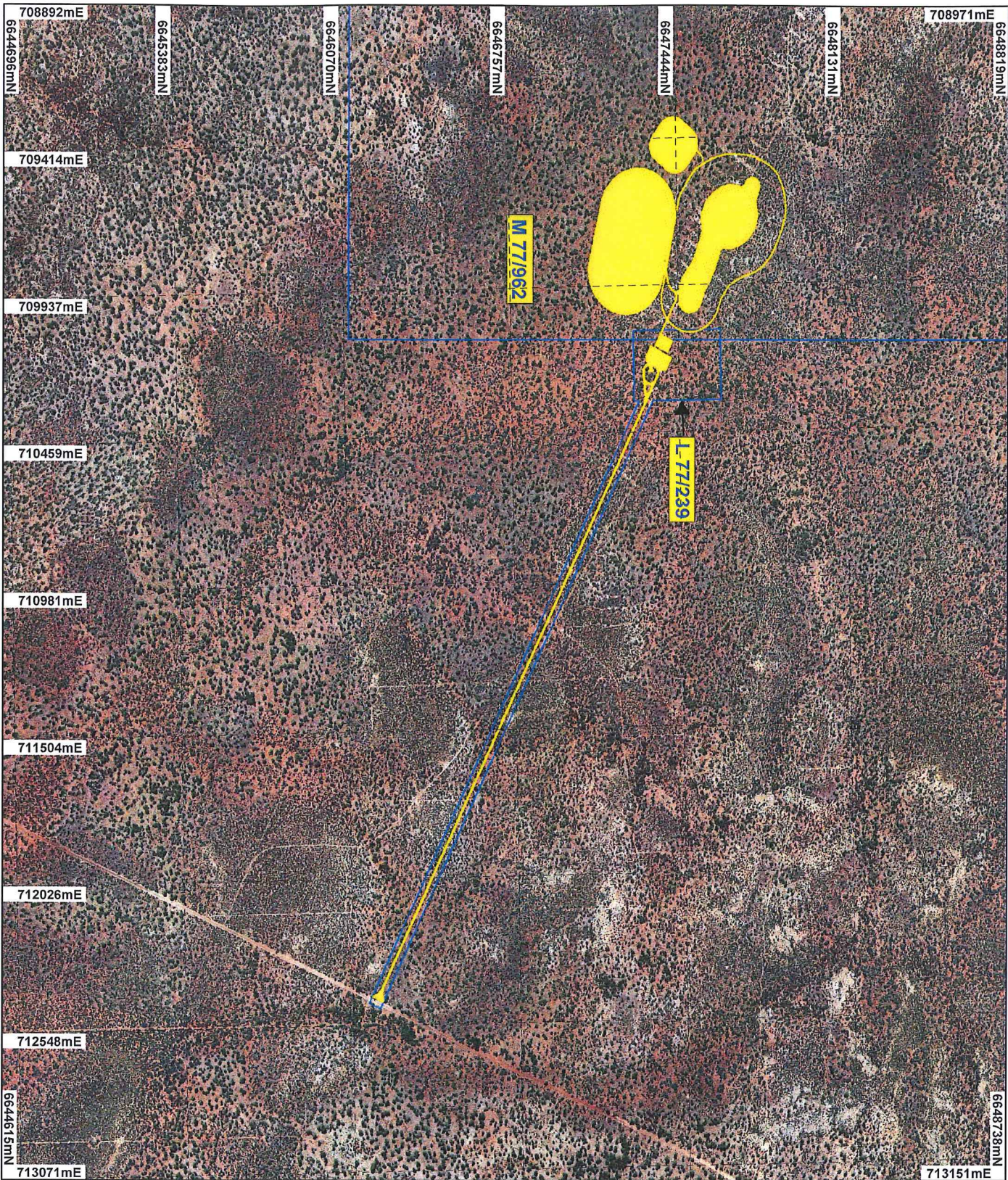
STEVE TANTALA
 Officer with delegated authority under Section 20 of the Environmental Protection Act 1986

Information derived from this map should be confirmed with the data custodian acknowledged by the agency acronym in the legend.



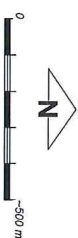
WA Crown Copyright 2002

PLAN 61971D



LEGEND

- Mining Tenements
- Clearing Instruments
- Areas Approved to Clear
- Jackson 50cm Orthomosaic - Landgate 2007



Geocentric Datum Australia 1994

Note: the data in this map have not been projected. This may result in geometric distortion or measurement inaccuracies.

STEVE YANTALA

Officer with delegated authority under Section 20 of the Environmental Protection Act 1986

Information derived from this map should be confirmed with the data custodian acknowledged by the agency acronym in the legend.



WA Crown Copyright 2002