

CPS 6244/3 - Map (c)

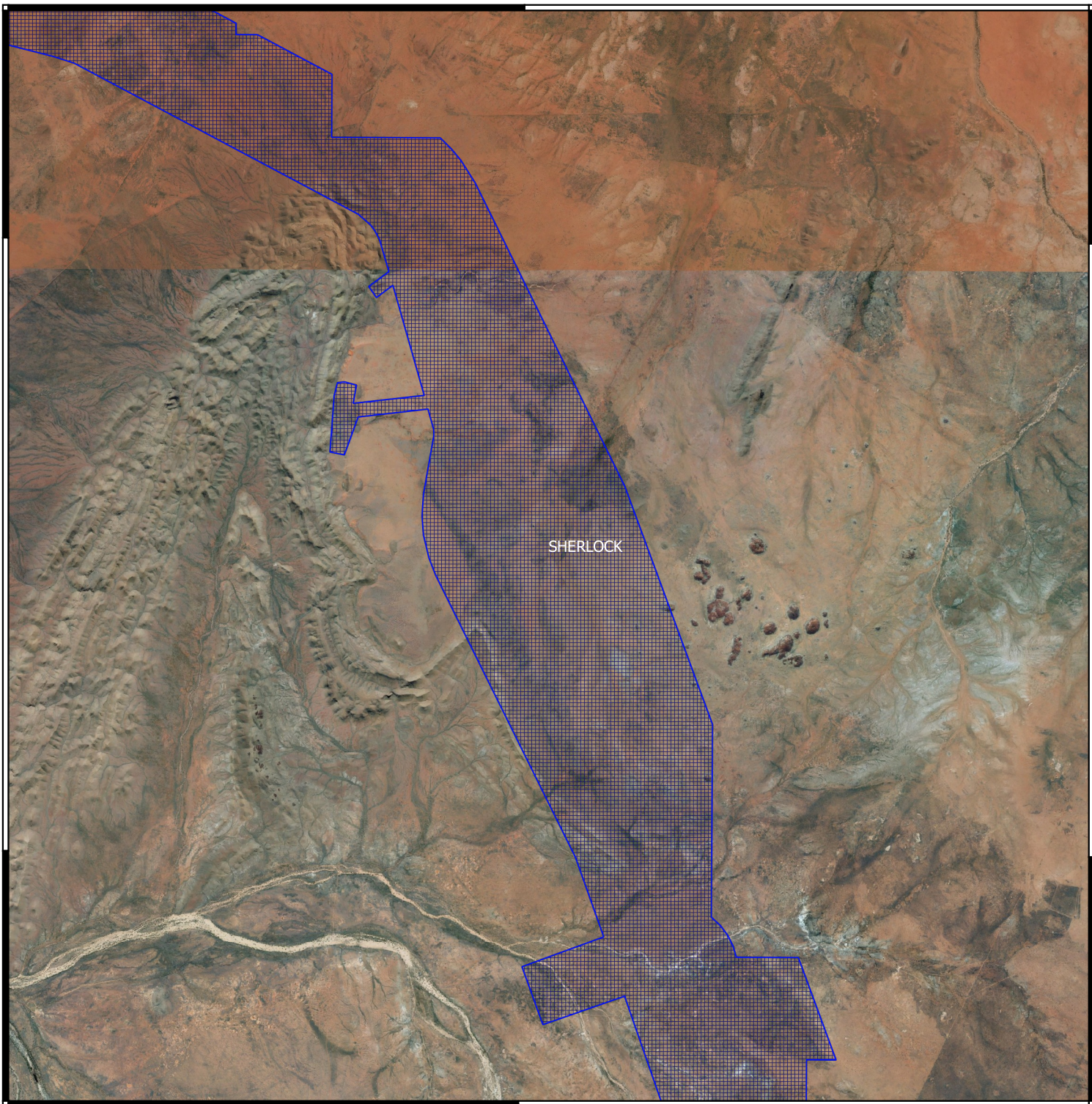
117°54'0.000"E

21°0'0.000"S


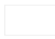

21°0'0.000"S

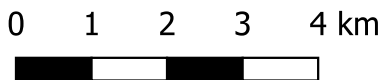
21°6'0.000"S

21°6'0.000"S



117°54'0.000"E

-  CPS areas applied to clear
-  Localities - Landgate
-  Local Government Authorities



1:100000

MGA Zone 50
Geocentric Datum of Australia 1994



GOVERNMENT OF
WESTERN AUSTRALIA