

CPS 6244/3 - Map (g)

117°48'0.000"E

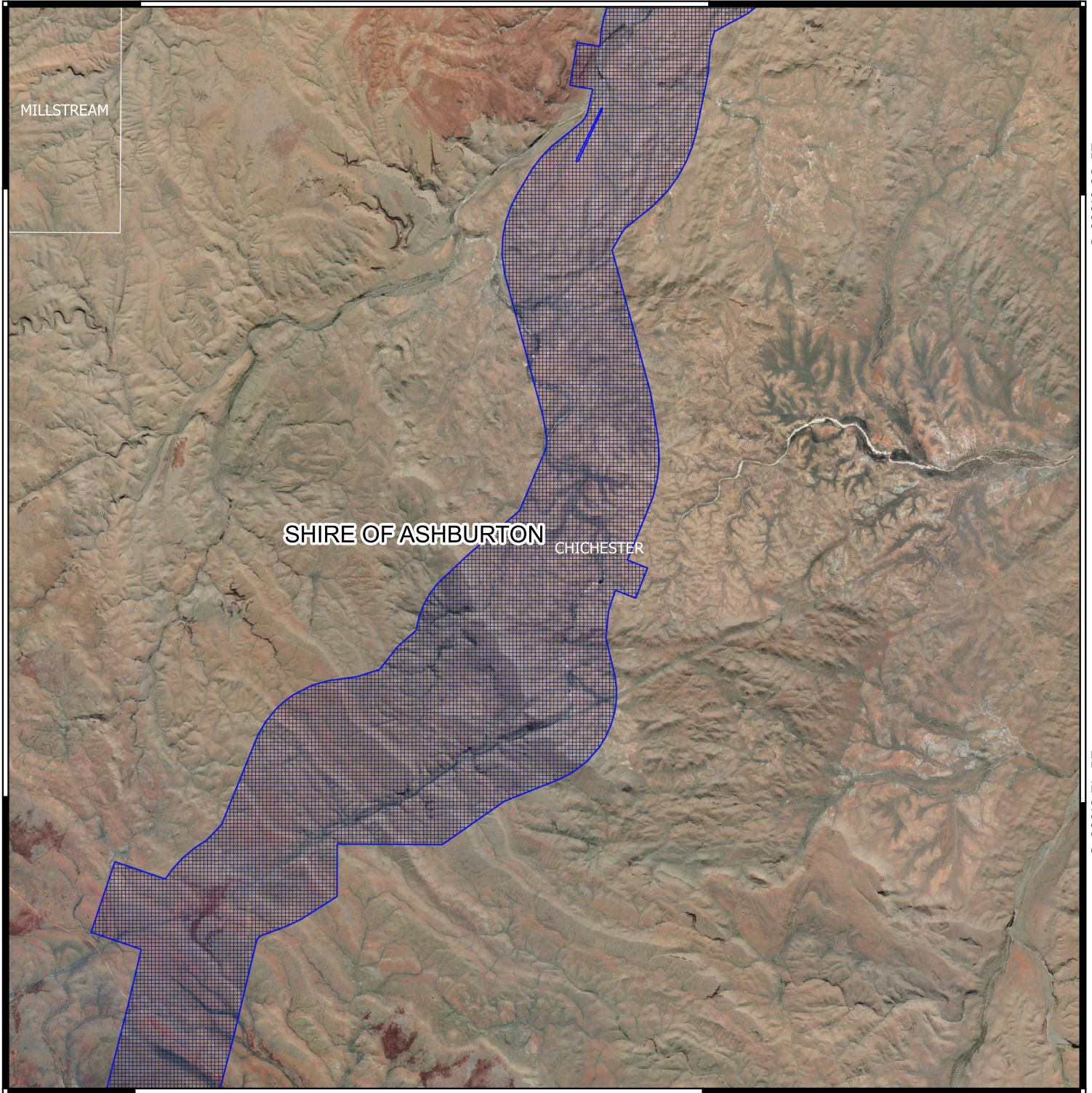
117°54'0.000"E

21°36'0.000"S

21°36'0.000"S



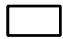
21°42'0.000"S

21°42'0.000"S



117°48'0.000"E

117°54'0.000"E

-  CPS areas applied to clear
-  Localities - Landgate
-  Local Government Authorities



0 1 2 3 4 km



1:100000

MGA Zone 50
Geocentric Datum of Australia 1994



GOVERNMENT OF
WESTERN AUSTRALIA