

# CPS 6244/4 - Map B

117°43.200'E

117°46.800'E

117°50.400'E

20°49.200'S

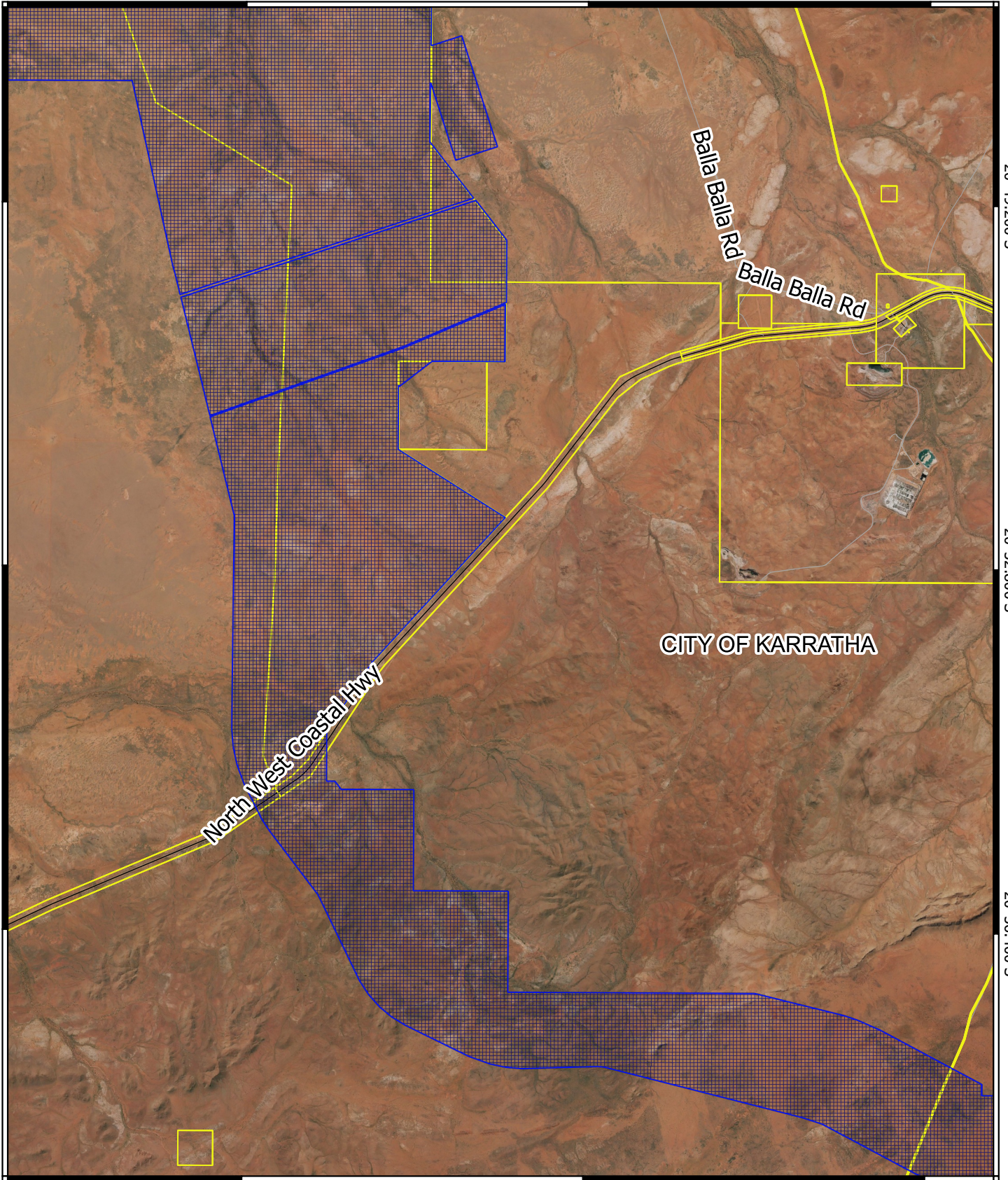
20°49.200'S

20°52.800'S

20°52.800'S

20°56.400'S






20°56.400'S



117°43.200'E

117°46.800'E

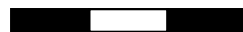
117°50.400'E

-  CPS areas applied to clear
-  Cadastre - LGATE 218
-  Local Government Authorities
- Road Centrelines
  -  Highway
  -  Local Rd - Sealed



1:96623

0 1 2 3 km



MGA 94  
Geocentric Datum of Australia 1994



GOVERNMENT OF  
WESTERN AUSTRALIA