

CPS 6244/4 - Map E

117°50.400'E

117°54.000'E

117°57.600'E

21°07.200'S

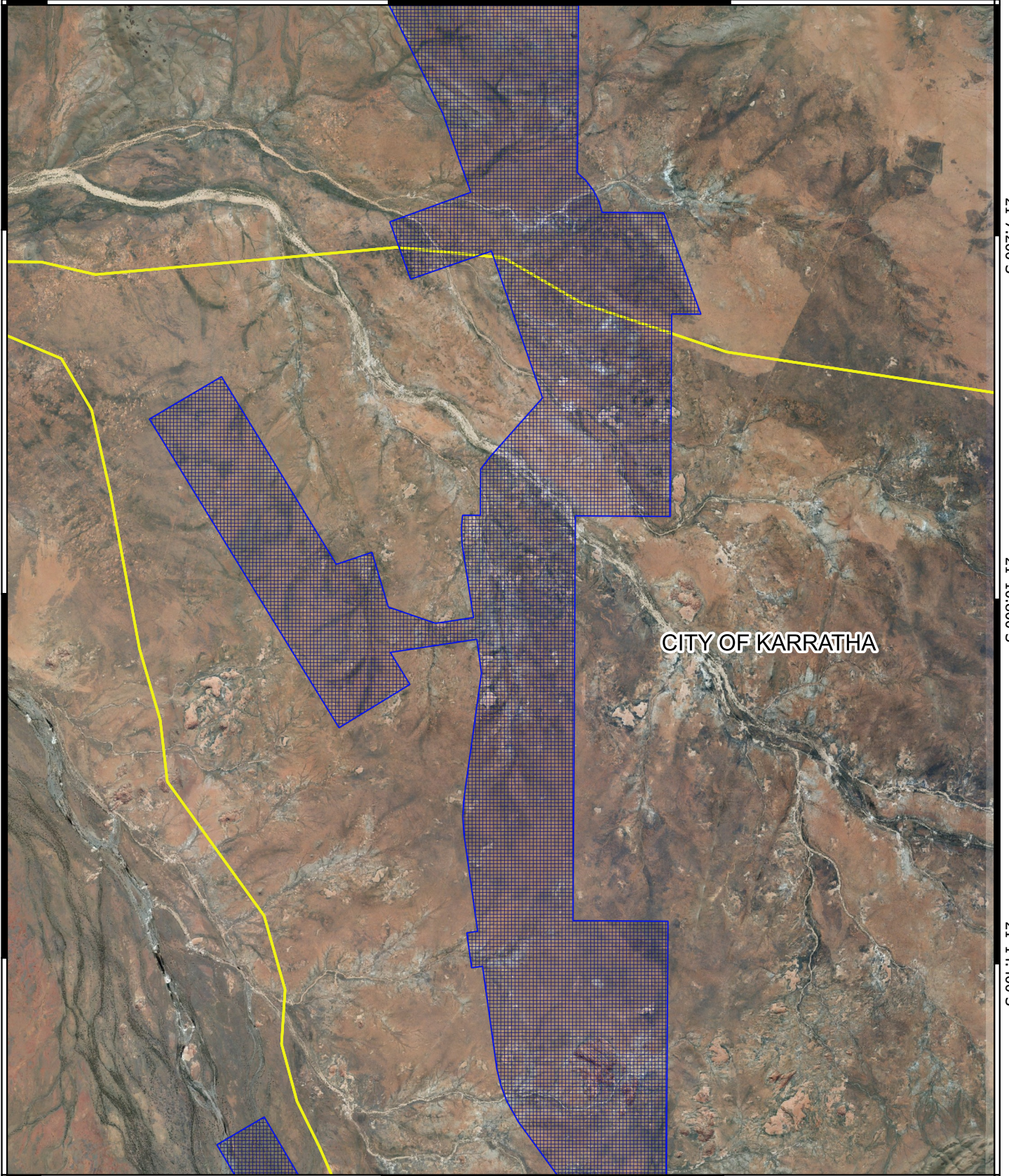
21°10.800'S

21°14.400'S

21°07.200'S

21°10.800'S




21°14.400'S



117°50.400'E

117°54.000'E

117°57.600'E

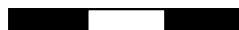
-  CPS areas applied to clear
-  Cadastre - LGATE 218
-  Local Government Authorities

Image



1:96623

0 1 2 3 km



MGA 94
Geocentric Datum of Australia 1994



GOVERNMENT OF
WESTERN AUSTRALIA