

CPS 6244/4 - Map F

117°54.000'E

117°57.600'E

118°1.200'E

21°14.400'S

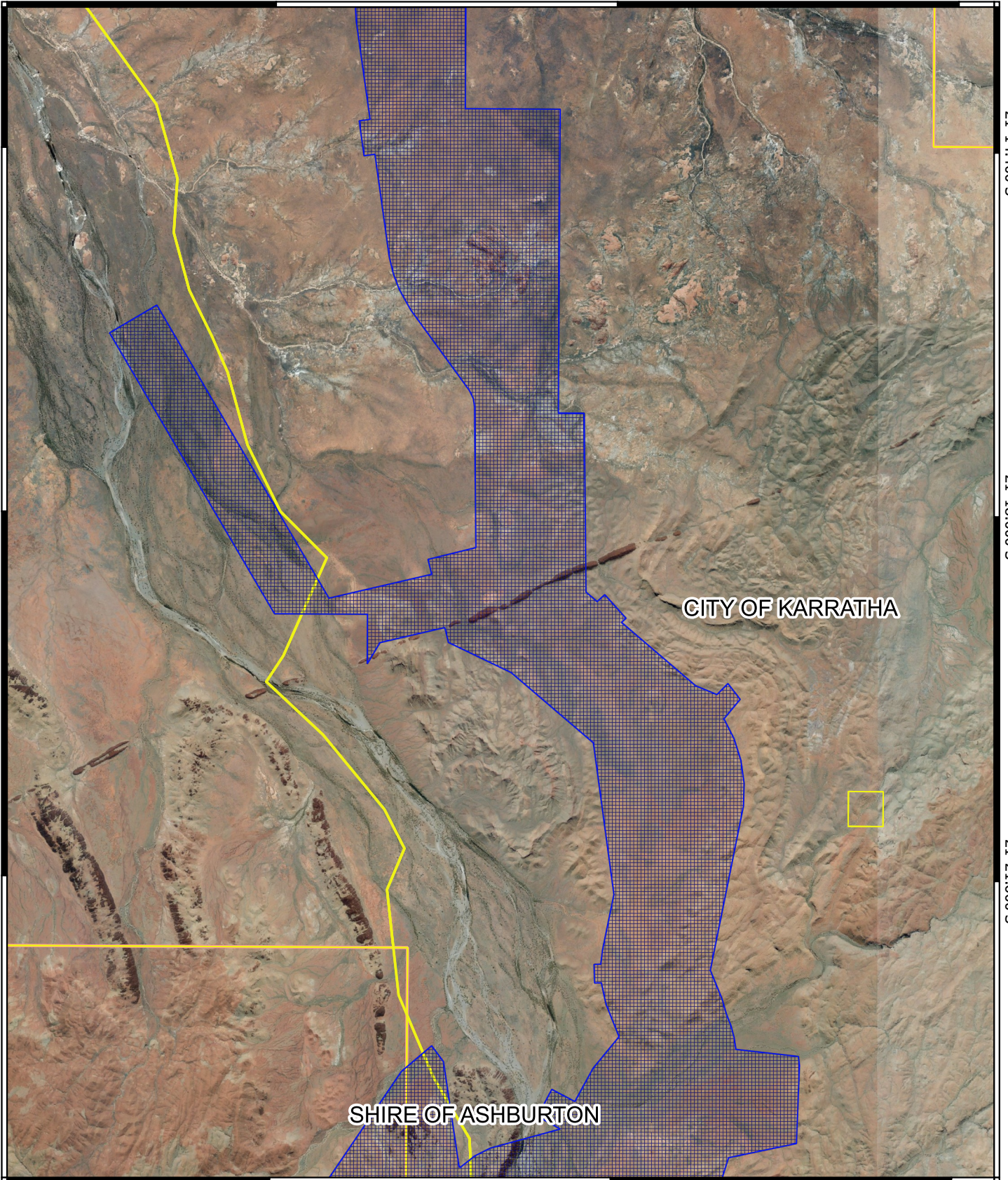
21°14.400'S

21°18.000'S

21°18.000'S

21°21.600'S




21°21.600'S



117°54.000'E

117°57.600'E

118°1.200'E

-  CPS areas applied to clear
-  Cadastre - LGATE 218
-  Local Government Authorities

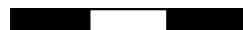
Image

N



1:96623

0 1 2 3 km



MGA 94
Geocentric Datum of Australia 1994



GOVERNMENT OF
WESTERN AUSTRALIA