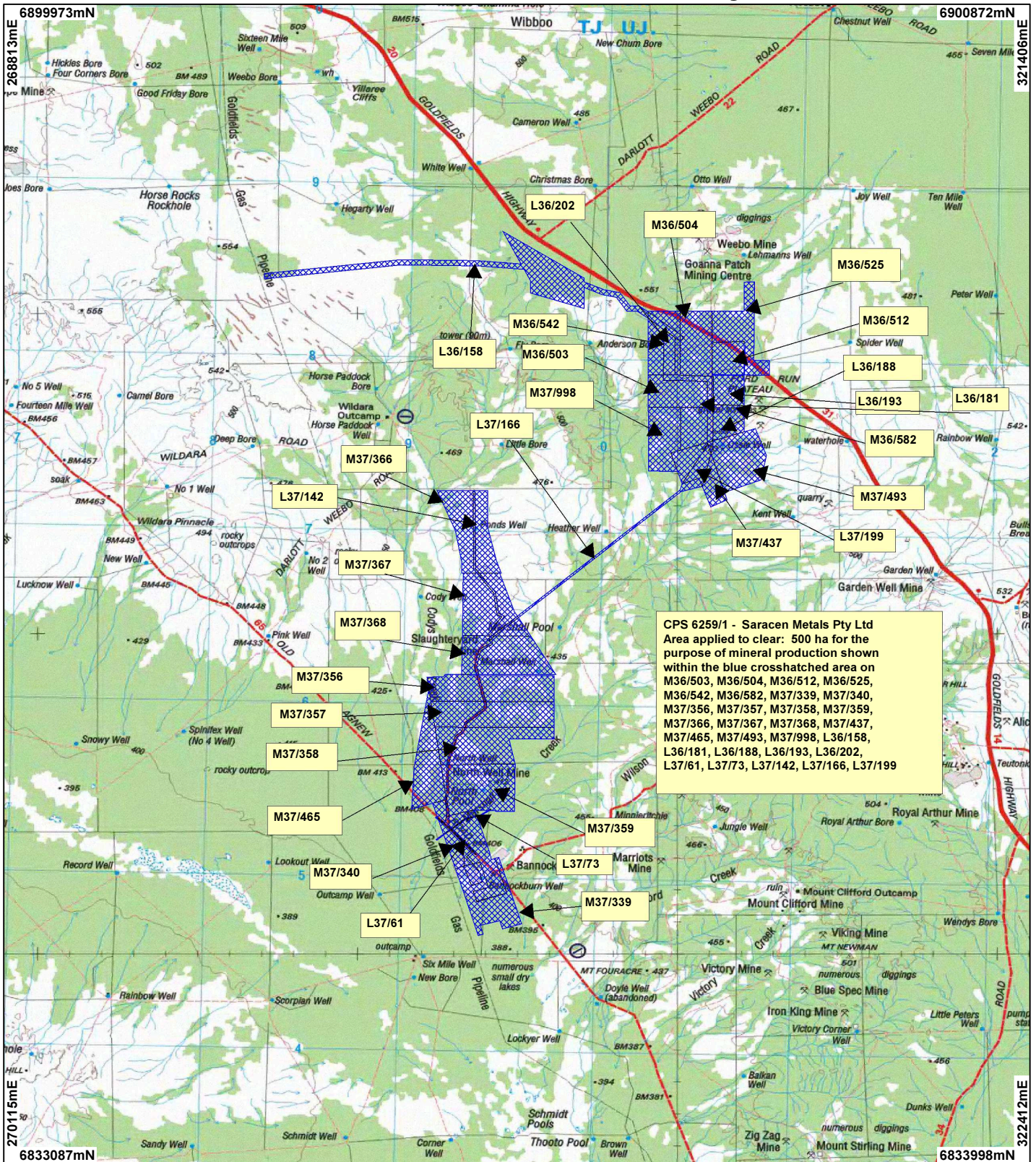


# CPS 6259/1 - Saracen Metals Pty Ltd



CPS 6259/1 - Saracen Metals Pty Ltd Area applied to clear: 500 ha for the purpose of mineral production shown within the blue crosshatched area on M36/503, M36/504, M36/512, M36/525, M36/542, M36/582, M37/339, M37/340, M37/356, M37/357, M37/358, M37/359, M37/366, M37/367, M37/368, M37/437, M37/465, M37/493, M37/998, L36/158, L36/181, L36/188, L36/193, L36/202, L37/161, L37/73, L37/142, L37/166, L37/199

## LEGEND

- Mining Tenements
- Clearing Instruments
- NATMAP 250K Series Mapping - GA 08/03



0  7.5 km

Scale 1:300000

(Approximate when reproduced at A4)

Geocentric Datum Australia 1994

Note: the data in this map have not been projected. This may result in geometric distortion or measurement inaccuracies.

..... Date .....

Officer with delegated authority under Section 20 of the Environmental Protection Act 1986

Information derived from this map should be confirmed with the data custodian acknowledged by the agency acronym in the legend.



WESTERN AUSTRALIA  
WA Crown Copyright 2002