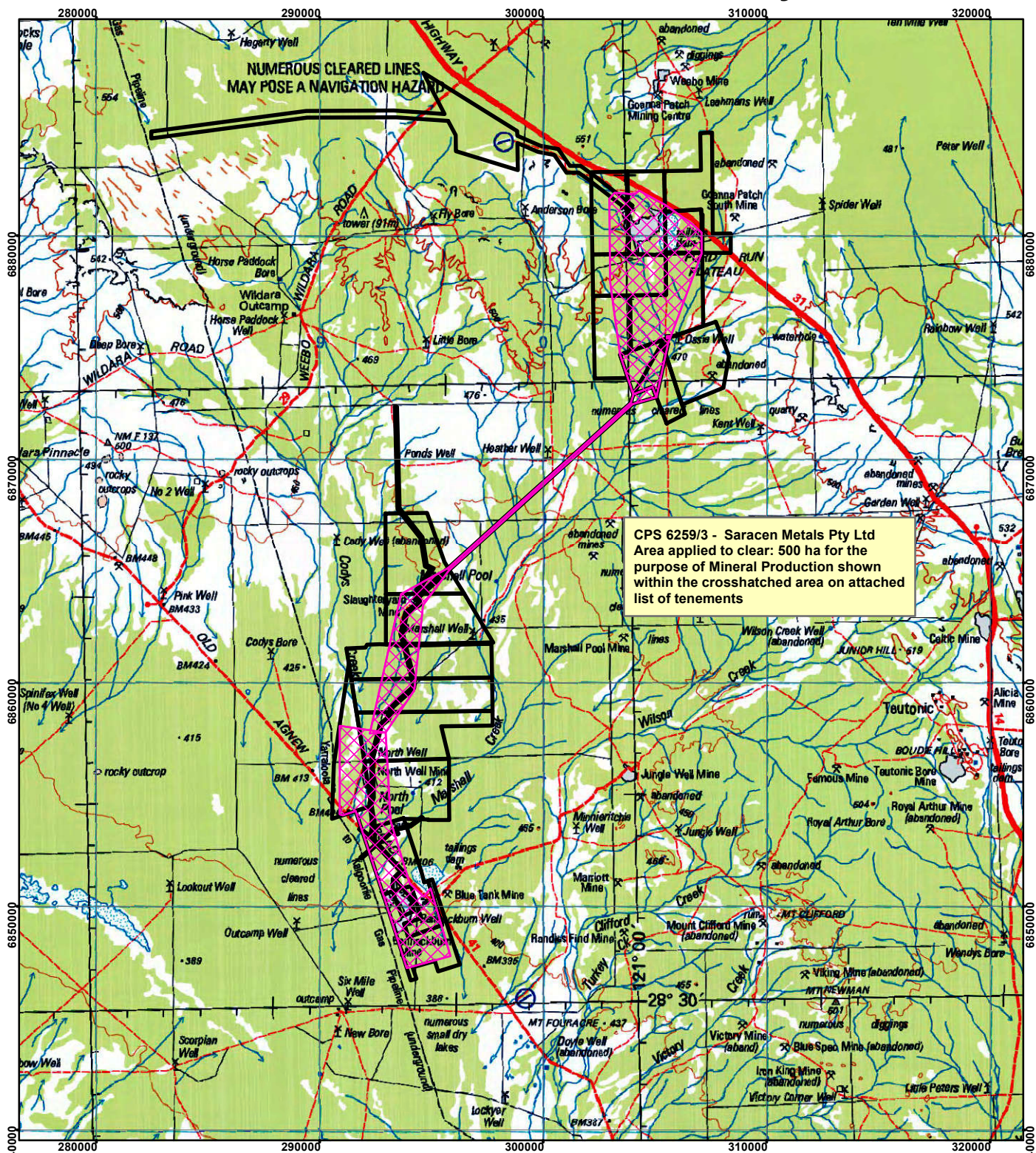




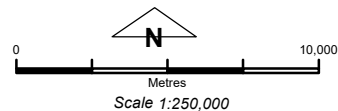
# CPS 6259/3 - Saracen Metals Pty Ltd



CPS 6259/3 - Saracen Metals Pty Ltd  
 Area applied to clear: 500 ha for the  
 purpose of Mineral Production shown  
 within the crosshatched area on attached  
 list of tenements

## Legend

-  Clearing Instruments
-  Mining Tenements



Geocentric Datum Australia 1994  
 Note: the data in this map have not been  
 projected. This may result in geometric  
 distortion or measurement inaccuracies.

..... Date .....

Officer with delegated authority under Section 20 of  
 the Environmental Protection Act 1986

Information derived from this map should be  
 confirmed with the data custodian acknowledged  
 by the agency acronym in the legend.

