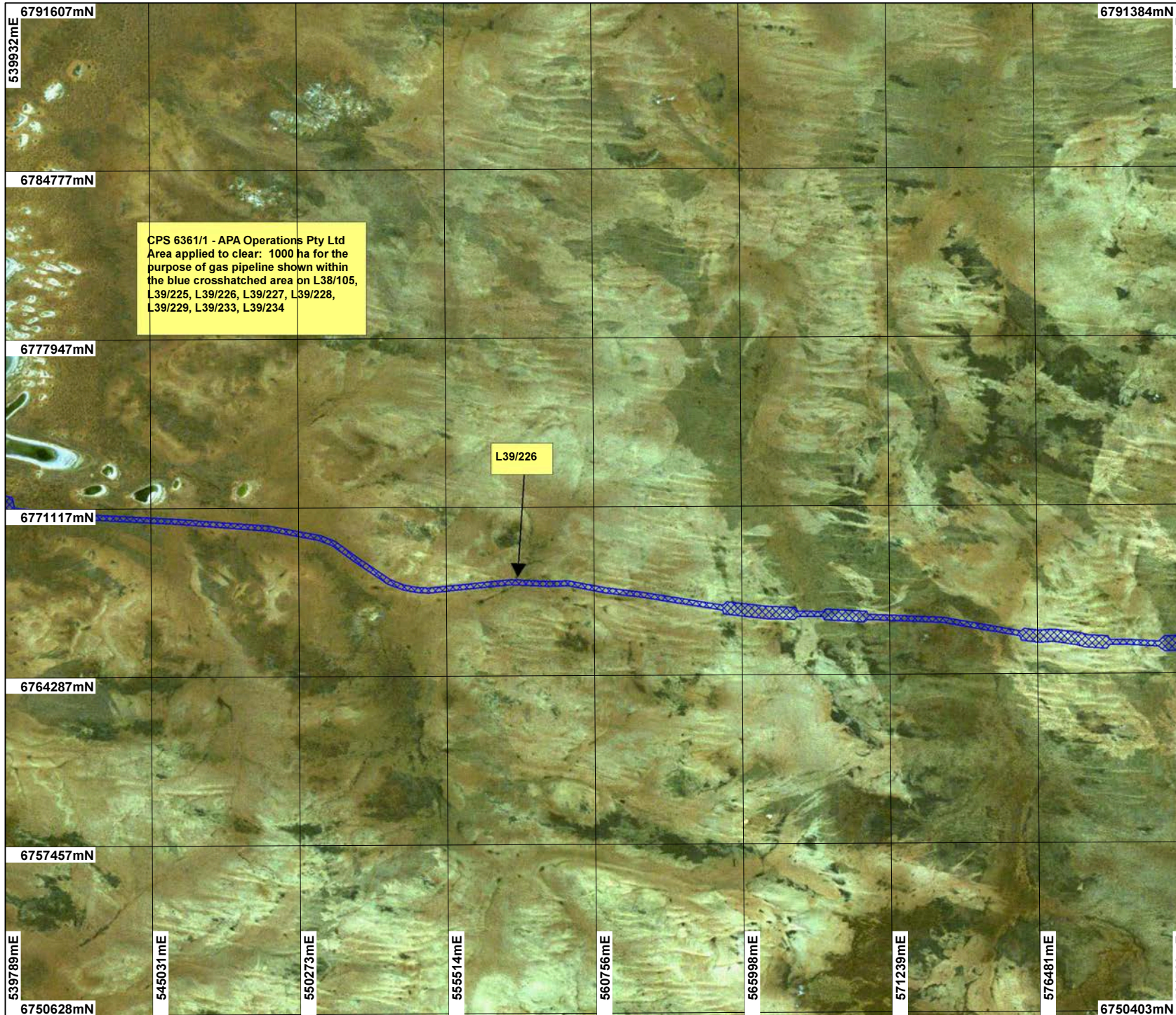


# CPS 6361/1 - APA Operations Pty Ltd - MAP E



CPS 6361/1 - APA Operations Pty Ltd  
 Area applied to clear: 1000 ha for the  
 purpose of gas pipeline shown within  
 the blue crosshatched area on L38/105,  
 L39/225, L39/226, L39/227, L39/228,  
 L39/229, L39/233, L39/234

L39/226

**LEGEND**

- Mining Tenements
- Land parcels related to instrument
- Clearing Instruments

Western Australia Landsat Mosaic 25m - AGO 2006

Scale 1:200000  
 (Approximate when reproduced at A4)

Geocentric Datum Australia 1994

*Note: the data in this map have not been projected. This may result in geometric distortion or measurement inaccuracies.*

..... Date .....

Officer with delegated authority under Section 20 of the Environmental Protection Act 1986

Information derived from this map should be confirmed with the data custodian acknowledged by the agency acronym in the legend.

WESTERN AUSTRALIA  
 WA Crown Copyright 2002