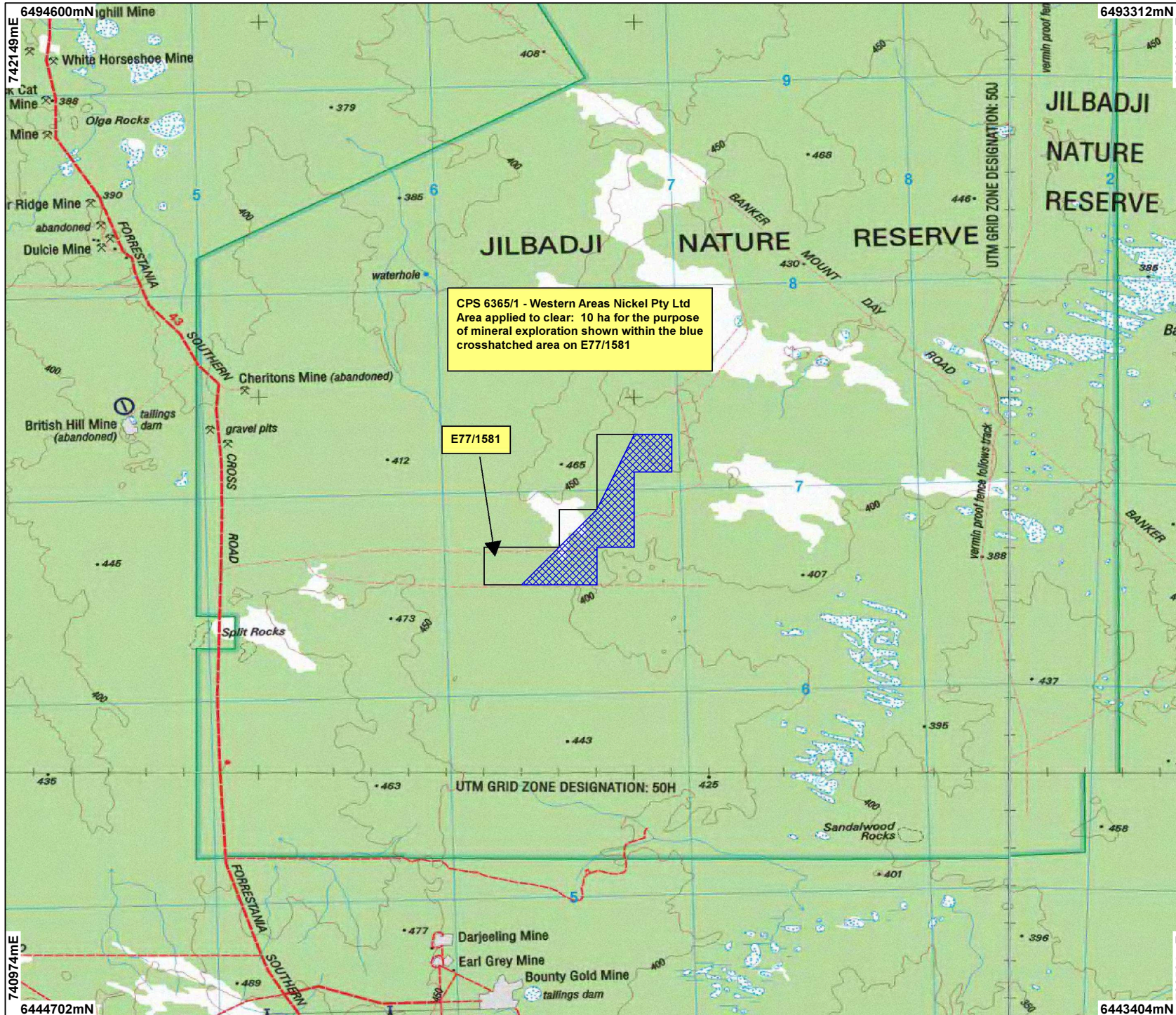


CPS 6365/1 - Western Areas Nickel Pty Ltd



CPS 6365/1 - Western Areas Nickel Pty Ltd
 Area applied to clear: 10 ha for the purpose
 of mineral exploration shown within the blue
 crosshatched area on E77/1581

E77/1581

LEGEND

- Mining Tenements
- Clearing Instruments
- NATMAP 250K Series Mapping - GA 08/03



Scale 1:240000
 (Approximate when reproduced at A4)
 Geocentric Datum Australia 1994
 Note: the data in this map have not been
 projected. This may result in geometric
 distortion or measurement inaccuracies.

Date

Officer with delegated authority under Section 20 of
 the Environmental Protection Act 1986

Information derived from this map should be
 confirmed with the data custodian acknowledged
 by the agency acronym in the legend.

