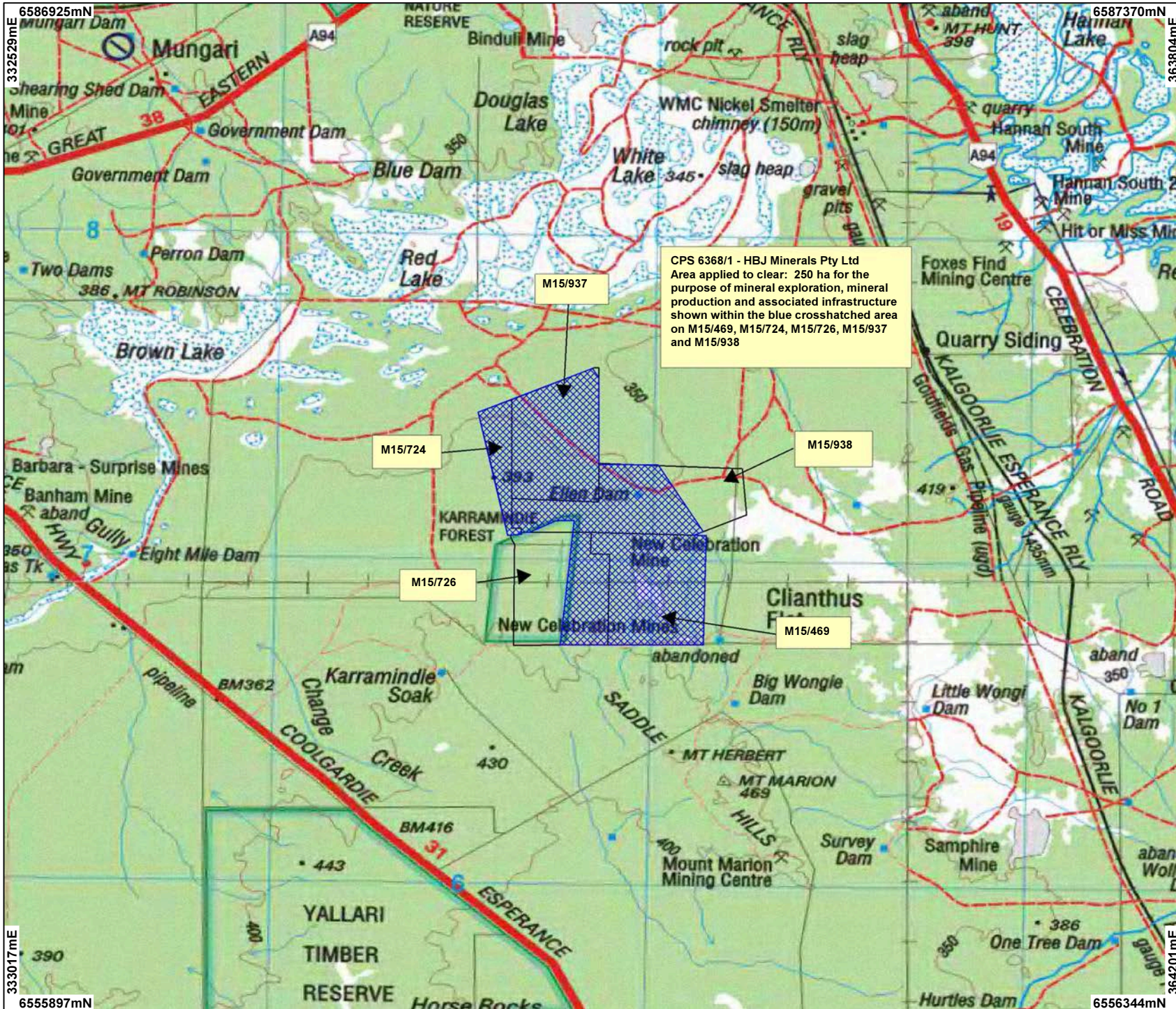


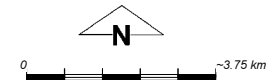
CPS 6368/1 - HBJ Minerals Pty Ltd



CPS 6368/1 - HBJ Minerals Pty Ltd
 Area applied to clear: 250 ha for the purpose of mineral exploration, mineral production and associated infrastructure shown within the blue crosshatched area on M15/469, M15/724, M15/726, M15/937 and M15/938

LEGEND

- Mining Tenements
- Clearing Instruments
- NATMAP 250K Series Mapping - GA 08/03



Scale 1:150000
 (Approximate when reproduced at A4)
 Geocentric Datum Australia 1994
 Note: the data in this map have not been projected. This may result in geometric distortion or measurement inaccuracies.

..... Date

Officer with delegated authority under Section 20 of the Environmental Protection Act 1986

Information derived from this map should be confirmed with the data custodian acknowledged by the agency acronym in the legend.



6586925mN
332529mE
333017mE
6555897mN

6587370mN
363804mE
364201mE
6556344mN