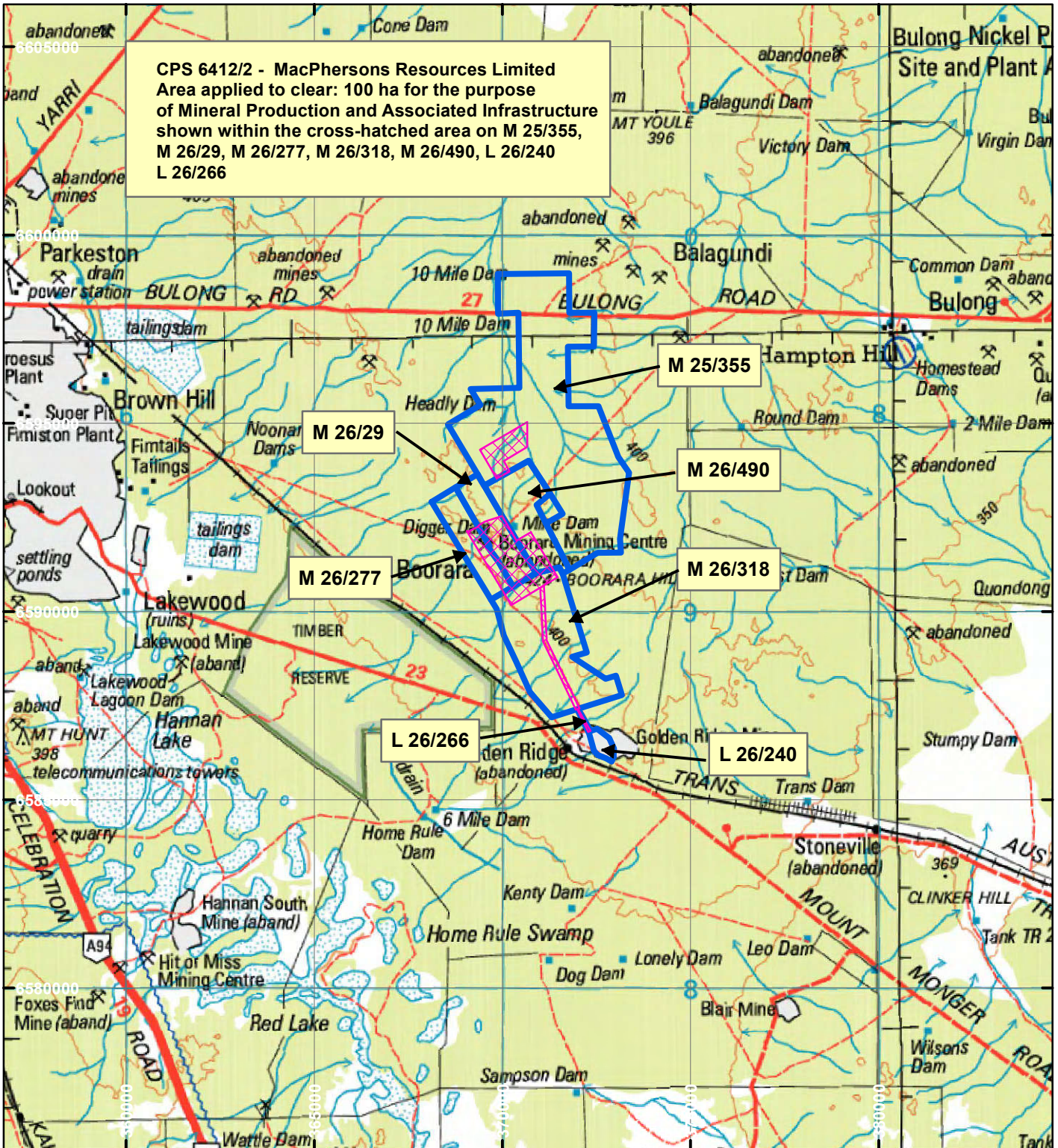


CPS 6412/2 - MacPhersons Resources Limited



CPS 6412/2 - MacPhersons Resources Limited
 Area applied to clear: 100 ha for the purpose
 of Mineral Production and Associated Infrastructure
 shown within the cross-hatched area on M 25/355,
 M 26/29, M 26/277, M 26/318, M 26/490, L 26/240
 L 26/266

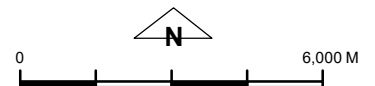
LEGEND



Clearing Instruments



Mining Tenements



Scale 1:150,000

(Approximate when reproduced at A4)

Geocentric Datum Australia 1994

Note: the data in this map have not been projected. This may result in geometric distortion or measurement inaccuracies.

..... Date

Officer with delegated authority under Section 20 of the Environmental Protection Act 1986
 Information derived from this map should be confirmed with the data custodian acknowledged by the agency acronym in the legend.

