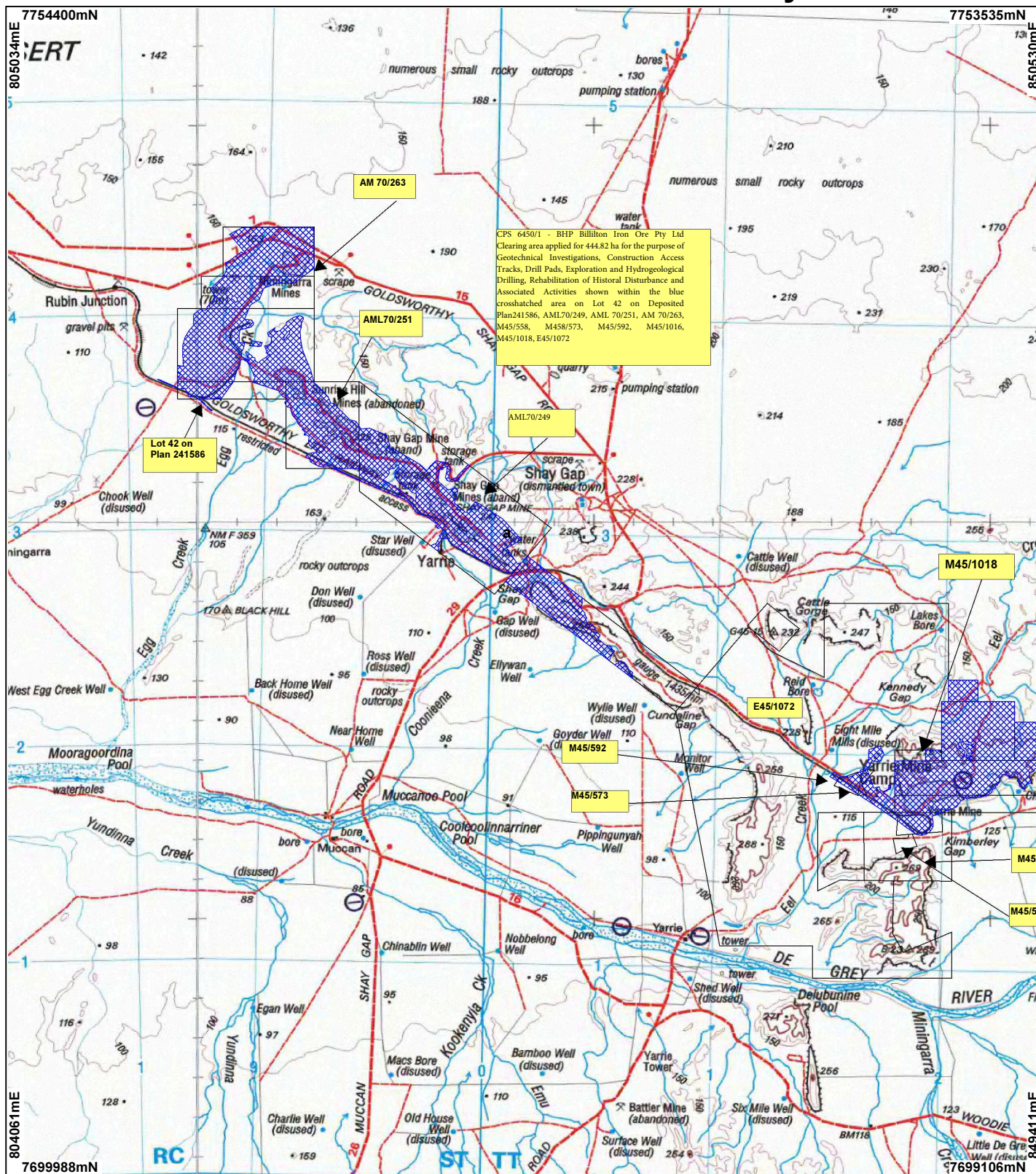


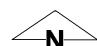

# CPS 6450/1 - BHP Billiton Iron Ore Pty Ltd



CPS 6450/1 - BHP Billiton Iron Ore Pty Ltd  
 Clearing area applied for 444.82 ha for the purpose of Geotechnical Investigations, Construction Access Tracks, Drill Pads, Exploration and Hydrogeological Drilling, Rehabilitation of Historical Disturbance and Associated Activities shown within the blue cross-hatched area on Lot 42 on Deposited Plan 241586, AML70/249, AML 70/251, AM 70/263, M45/558, M45/573, M45/592, M45/1016, M45/1018, E45/1072

## LEGEND

- Mining Tenements
- Land parcels related to instrument
- Clearing Instruments
- NATMAP 250K Series Mapping - GA 08/03

  
  
 Scale 1:250000  
 (Approximate when reproduced at A4)

Geocentric Datum Australia 1994  
 Note: the data in this map have not been projected. This may result in geometric distortion or measurement inaccuracies.

..... Date .....

Officer with delegated authority under Section 20 of the Environmental Protection Act 1986

Information derived from this map should be confirmed with the data custodian acknowledged by the agency acronym in the legend.

