


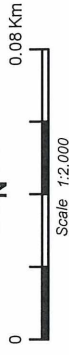


PLAN 6486/3A



LEGEND

-  Mining Tenements
 -  Clearing Instruments
 -  Areas Approved to Clear
- Orthophotography Sourced from Landgate



(Approximate when reproduced at A4)
Geocentric Datum Australia 1994
Note: the data in this map have not been projected. This may result in geometric distortion or measurement inaccuracies.

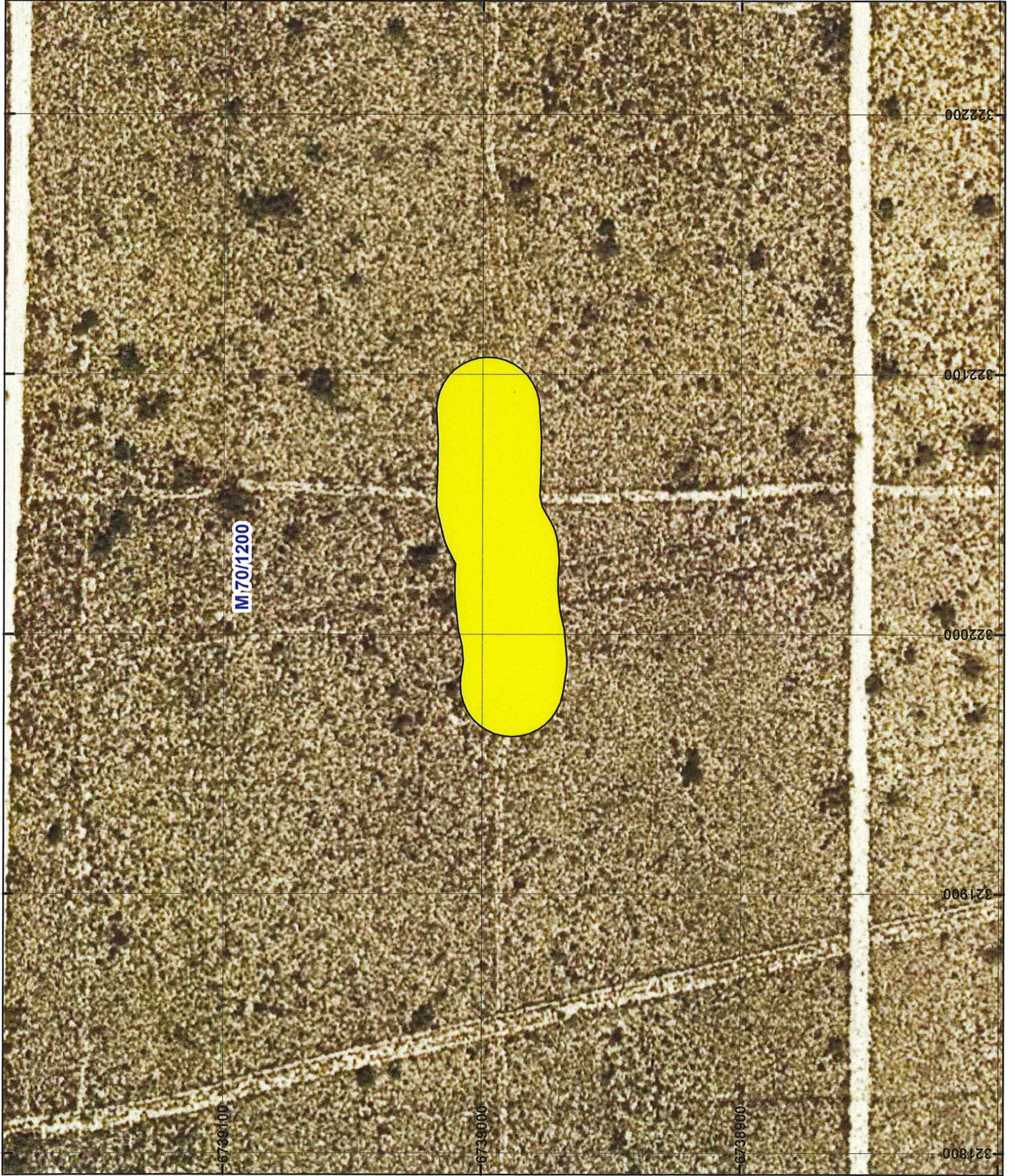
DAN MACHIN Date: 12/04/2017
Officer with delegated authority under Section 20 of the Environmental Protection Act 1986

Information derived from this map should be confirmed with the data custodian acknowledged by the agency acronym in the legend.



WA Crown Copyright 2002

PLAN 6486/3B



LEGEND

- Mining Tenements
- Clearing Instruments
- Areas Approved to Clear
- Orthophotography Sourced from Landgate



0 0.08 Km

Scale 1:2,000
(Approximate when reproduced at A4)

Geocentric Datum Australia 1994

Note: the data in this map have not been projected. This may result in geometric distortion or measurement inaccuracies.

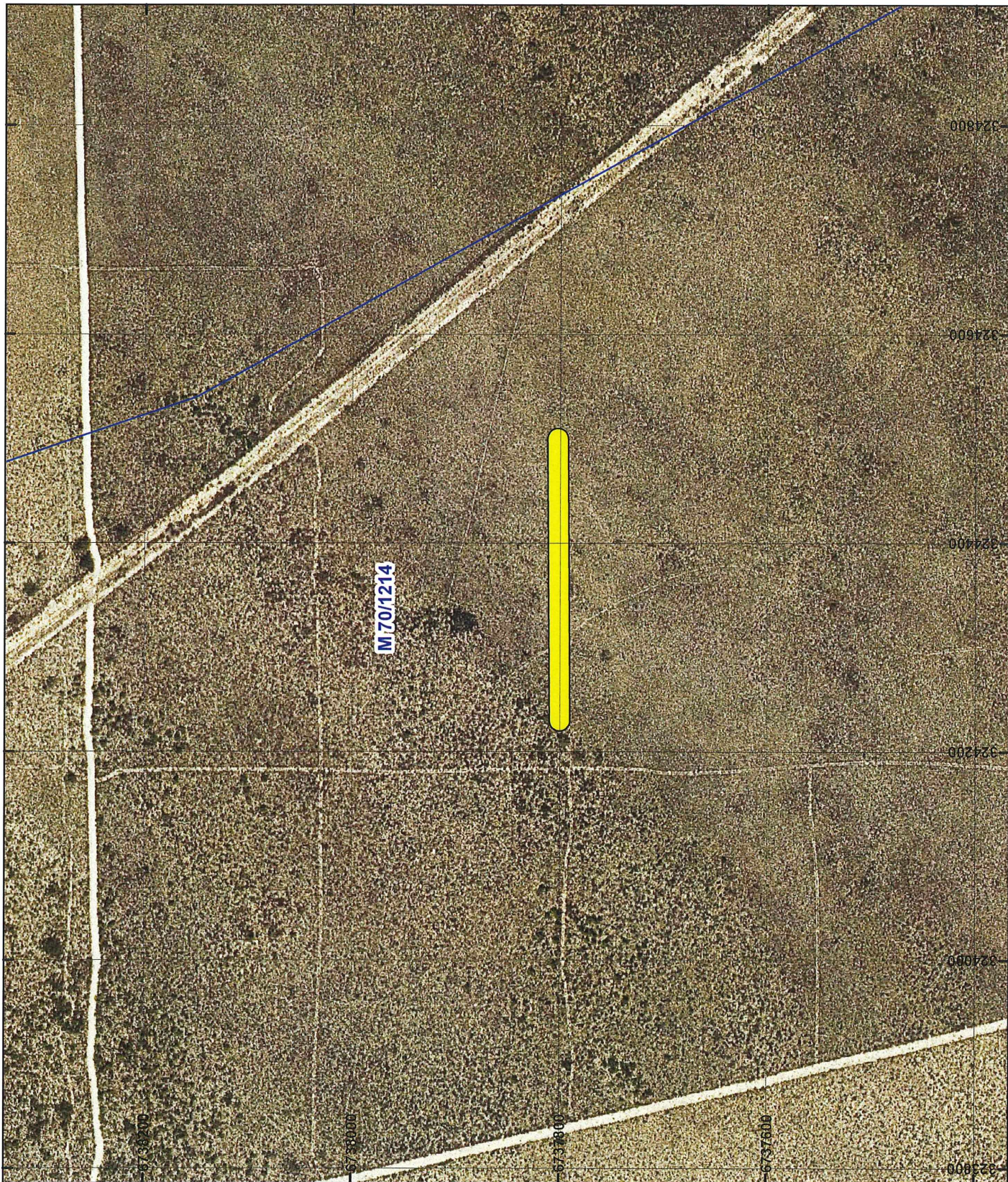
DAN MACHIN Date: 12/04/2017
Officer with delegated authority under Section 20 of the Environmental Protection Act 1986

Information derived from this map should be confirmed with the data custodian acknowledged by the agency acronym in the legend.






WA Crown Copyright 2002

PLAN 6486/3C



LEGEND

-  Mining Tenements
 -  Clearing Instruments
 -  Areas Approved to Clear
- Orthophotography Sourced from Landgate



Scale 1:5,000
(Approximate when reproduced at A4)

Geocentric Datum Australia 1994

Note: the data in this map have not been projected. This may result in geometric distortion or measurement inaccuracies.

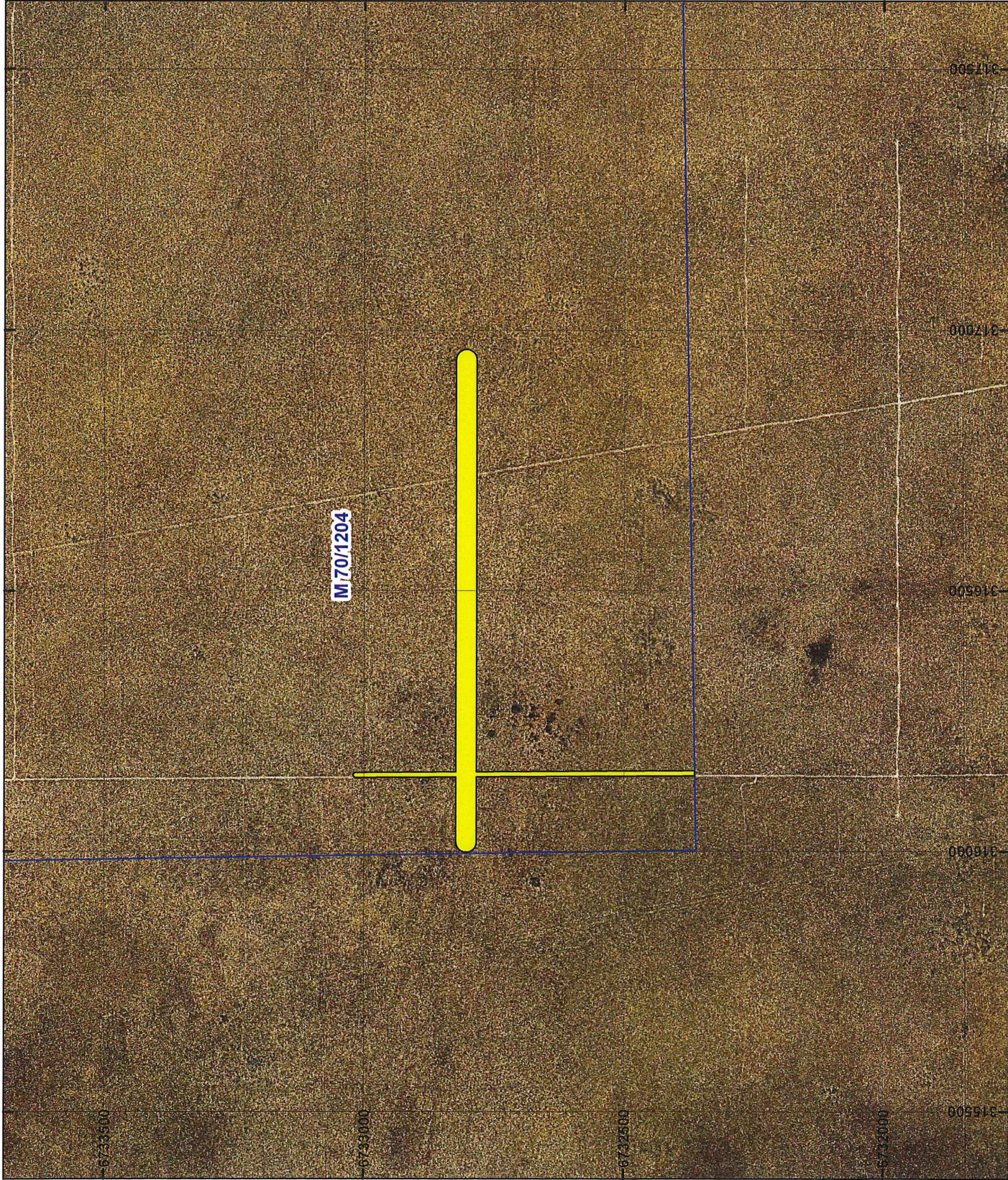
DAN MACHIN Date: 12/04/2017
Officer with delegated authority under Section 20 of the Environmental Protection Act 1986

Information derived from this map should be confirmed with the data custodian acknowledged by the agency acronym in the legend.



WA Crown Copyright 2002

PLAN 6486/3D



LEGEND

- Mining Tenements
- Clearing Instruments
- Areas Approved to Clear
- Orthophotography Sourced from Landgate



Scale 1:10,000
(Approximate when reproduced at A4)

Geocentric Datum Australia 1994

Note: the data in this map have not been projected. This may result in geometric distortion or measurement inaccuracies.

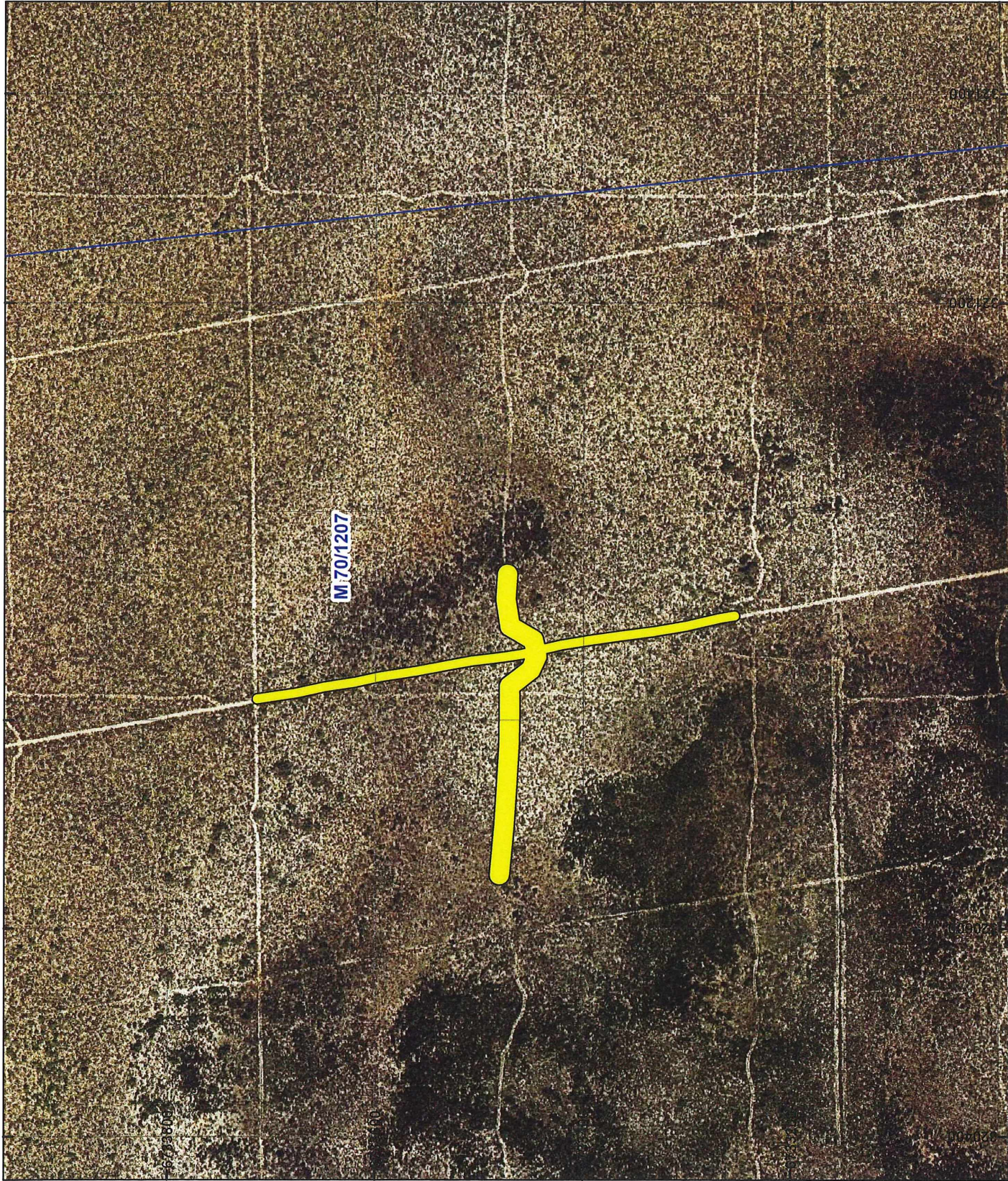
DAN MACHIN Date: 12/04/2017
Officer with delegated authority under Section 20 of the Environmental Protection Act 1986

Information derived from this map should be confirmed with the data custodian acknowledged by the agency acronym in the legend.



WA Crown Copyright 2002

PLAN 6486/3E



LEGEND

- Mining Tenements
- Clearing Instruments
- Areas Approved to Clear
- Orthophotography Sourced from Landgate



0 0.2 Km

Scale 1:5,000
(Approximate when reproduced at A4)

Geocentric Datum Australia 1994

Note: the data in this map have not been projected. This may result in geometric distortion or measurement inaccuracies.

DAN MACHIN Date: 12/04/2017
Officer with delegated authority under Section 20 of the Environmental Protection Act 1986

Information derived from this map should be confirmed with the data custodian acknowledged by the agency acronym in the legend.



WA Crown Copyright 2002

PLAN 6486/3F



LEGEND

- Mining Tenements
- Clearing Instruments
- Areas Approved to Clear
- Orthophotography Sourced from Landgate



Scale 1:12,000
(Approximate when reproduced at A4)

Geocentric Datum Australia 1994

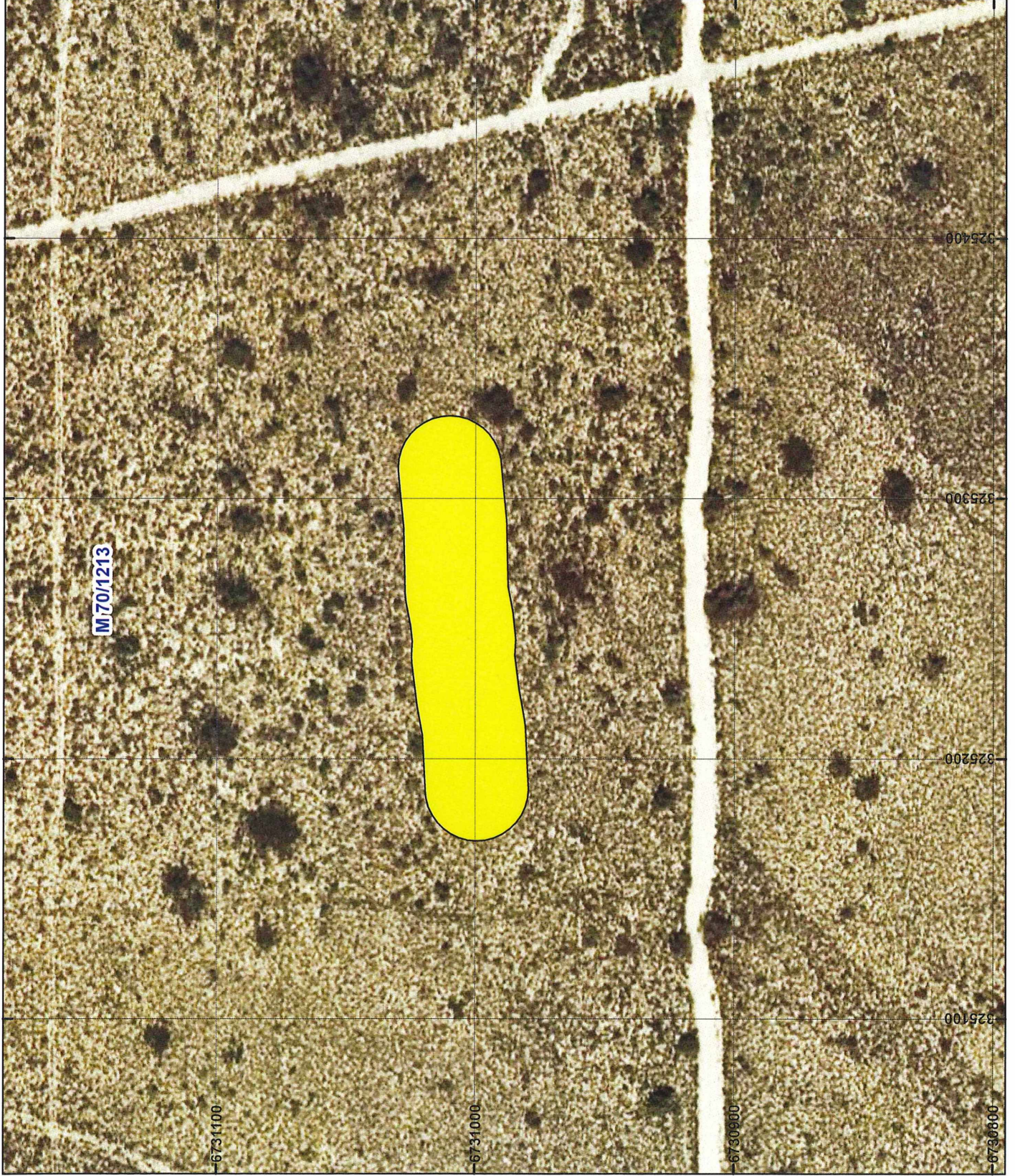
Note: the data in this map have not been projected. This may result in geometric distortion or measurement inaccuracies.

DAN MACHIN Date: 12/04/2017
Officer with delegated authority under Section 26 of the Environmental Protection Act 1986




Information derived from this map should be confirmed with the data custodian acknowledged by the agency acronym in the legend.



PLAN 6486/3G



LEGEND

-  Mining Tenements
 -  Clearing Instruments
 -  Areas Approved to Clear
- Orthophotography Sourced from Landgate



Scale: 1:2,000
(Approximate when reproduced at A4)

Geocentric Datum Australia 1994

Note: the data in this map have not been projected. This may result in geometric distortion or measurement inaccuracies.



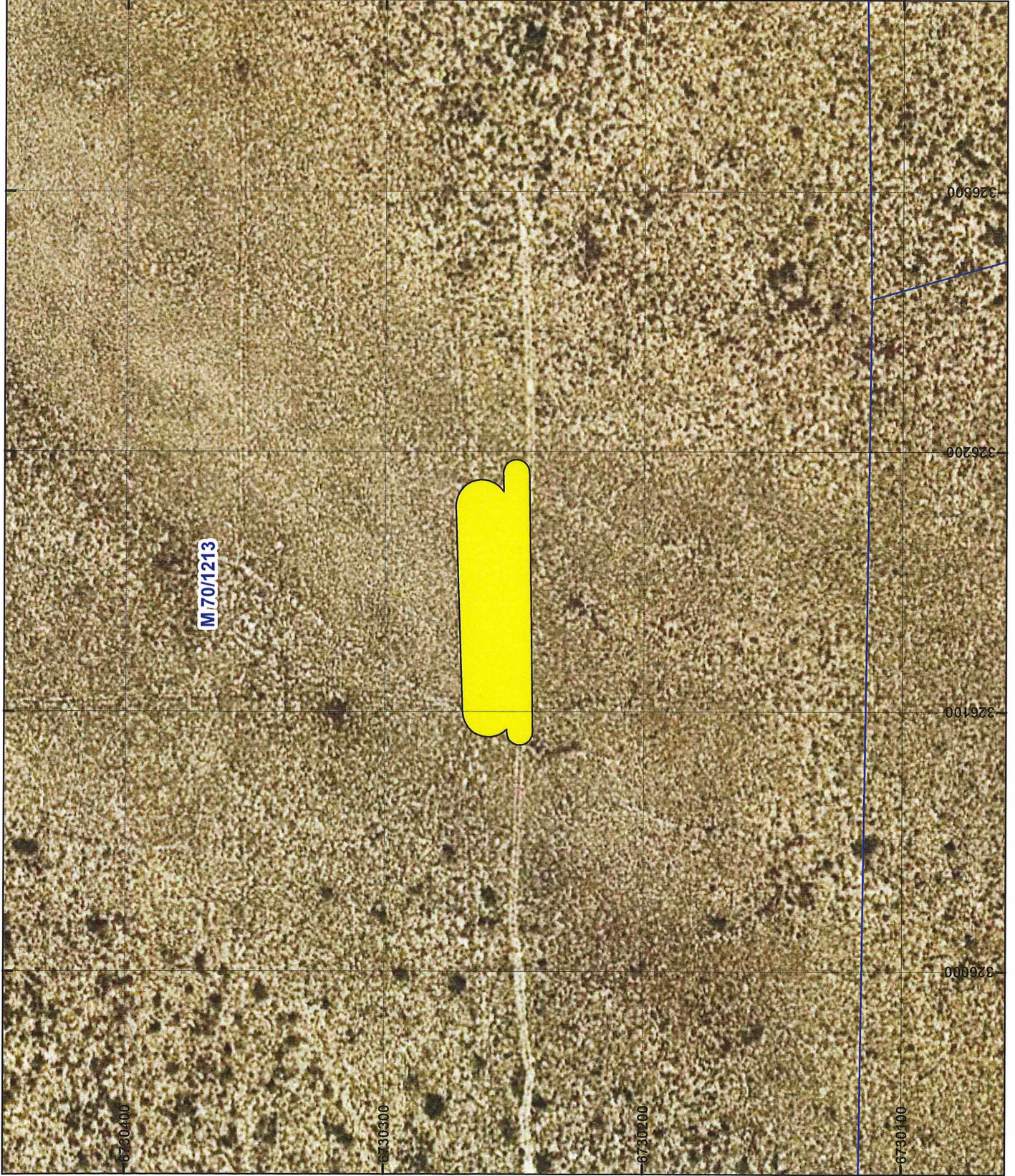
DAN MACHIN Date: 12/04/2017
Officer with delegated authority under Section 20 of the Environmental Protection Act 1986

Information derived from this map should be confirmed with the data custodian acknowledged by the agency acronym in the legend.



WA Crown Copyright 2002

PLAN 6486/3H



LEGEND

- Mining Tenements
- Clearing Instruments
- Areas Approved to Clear
- Orthophotography Sourced from Landgate



Scale 1:2,000
(Approximate when reproduced at A4)

Geocentric Datum Australia 1994

Note: the data in this map have not been projected. This may result in geometric distortion or measurement inaccuracies.

DAN MACHIN Date: 12/04/2017

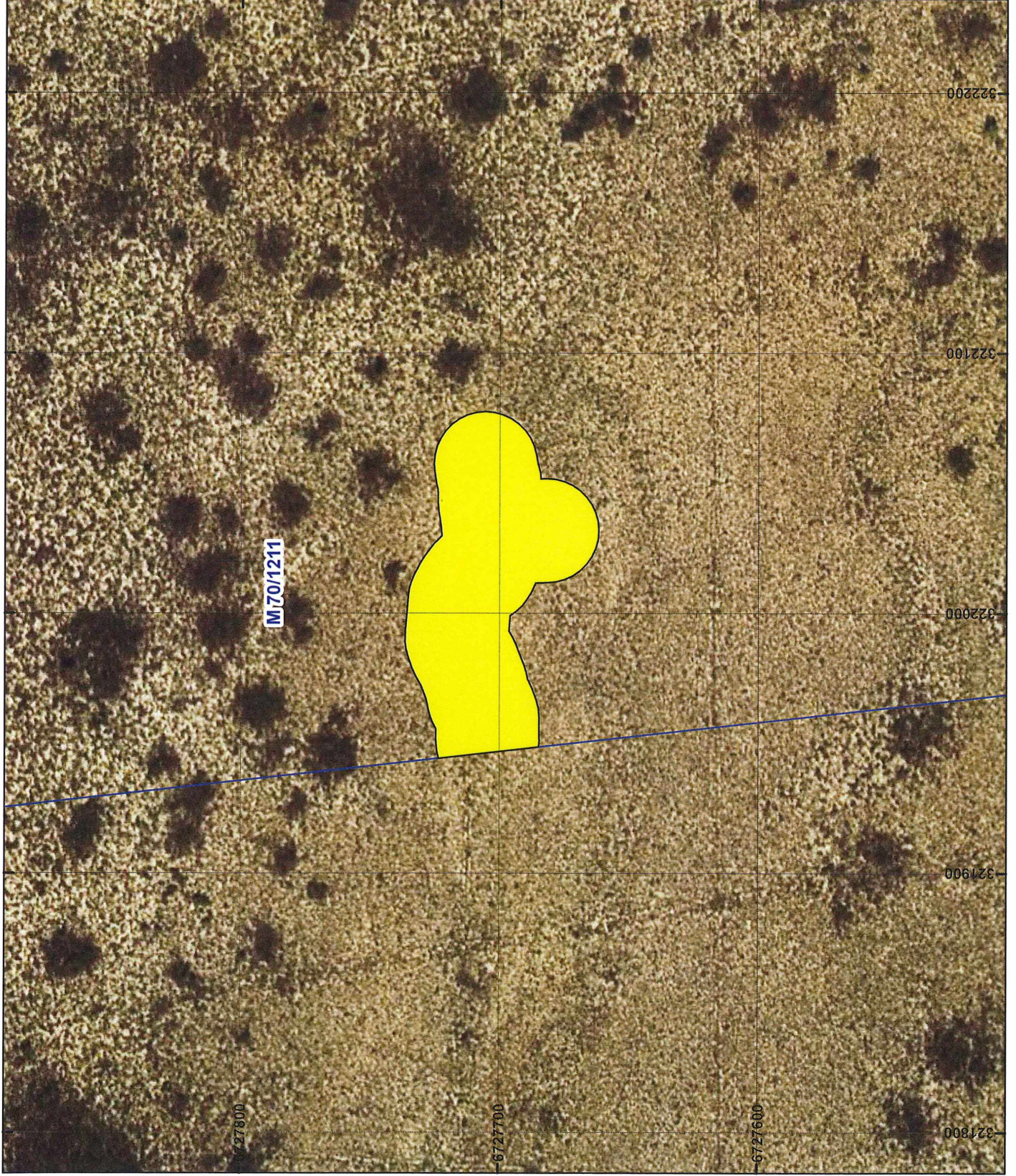
Officer with delegated authority under Section 20 of the Environmental Protection Act 1986

Information derived from this map should be confirmed with the data custodian acknowledged by the agency acronym in the legend.



WA Crown Copyright 2002

PLAN 6486/3I



LEGEND

- Mining Tenements
- Clearing Instruments
- Areas Approved to Clear
- Orthophotography Sourced from Landgate



Scale 1:2,000
(Approximate when reproduced at A4)

Geocentric Datum Australia 1994

Note: the data in this map have not been projected. This may result in geometric distortion or measurement inaccuracies.

DAN MACHIN Date: 12/04/2017
Officer with delegated authority under Section 20 of the Environmental Protection Act, 1986

Information derived from this map should be confirmed with the data custodian acknowledged by the agency acronym in the legend.



WA Crown Copyright 2002