

27 February 2015

Manager of Native Vegetation Clearing Branch  
Department of Environment Regulation  
Locked Bag 33  
Cloisters Square  
PERTH WA 6850

**Attention: Matthew Warnock**

Dear Matthew

**RE: APPLICATION TO CLEAR NATIVE VEGETATION, KWINANA FREEWAY, BALDIVIS**

On behalf of Perkins Builders Pty Ltd and BP Australia Pty Ltd, please find enclosed an application to clear native vegetation within the Kwinana Freeway Road Reserve, Baldivis. Also, provided herein are background project information and an assessment of the clearing against the ten clearing principles. A copy of the signed application form and the credit card payment form is provided in Attachment 1. Please note that the application form was prepared last year and is dated as such. The area to be cleared is no more than 4.5ha and the clearing period is May 2015 to March 2016.

#### **BACKGROUND**

BP Australia Pty Ltd has obtained conditional approval from the Metro South-West Joint Development Assessment Panel to construct two identical freeway service centres adjacent to the Kwinana Freeway on Lot 191 Paparone Road and Lot 192 Leary Road, Baldivis. A copy of the Development Assessment Panel approval can be provided upon request.

BP Australia has awarded Perkins Builders the contract to design and construct the Service Centres. As part of this contract, Aurora Environmental have been commissioned to provide environmental services for the project.

The Service Centres are located on opposite sides of the Freeway, with the western centre servicing north-bound traffic and the eastern centre servicing south-bound traffic.

Each Service Centre requires entry/exit ramps from the Kwinana Freeway. The construction of the entry/exit ramps necessitates the removal of planted native vegetation within the road reserve – Attachment 2.

It is understood that the vegetation in the road reserve was planted as a condition of approval for the extension of the Kwinana Freeway – EPA Assessment 31 and Ministerial Statement No. 69.

## ASSESSMENT OF CLEARING

**Principle (a) Native vegetation should not be cleared if it comprises a high level of biological diversity.**

The vegetation to be cleared is comprised of native species planted as part of MRWA's revegetation program implemented as part of the Kwinana Freeway extension.

MRWA has used the following species in its revegetation program along the Kwinana Freeway, south of Mundijong Road:

- *Acacia cochlearis*
- *Acacia pulchella*
- *Acacia truncata*
- *Anigozanthus humilis*
- *Anigozanthus manglesii*
- *Banksia prionotes*
- *Corymbia calophylla*
- *Eremaea pauciflora*
- *Eucalyptus gomphocephala*
- *Eucalyptus rudis*
- *Hakea lissocarpa*
- *Hakea trifurcata*
- *Hardenbergia comptoniana*
- *Kunzea ericifolia*
- *Kunzea recurva*
- *Melaleuca acerosa*
- *Melaleuca cuticularis*
- *Melaleuca huegelii*
- *Melaleuca incana*
- *Melaleuca megacephala*
- *Melaleuca preissiana*
- *Melaleuca raphiophylla*
- *Pericalymma elliptica*
- *Petrophile linearis*
- *Phyllanthus calycinus*
- *Viminaria juncea*
- *Xylomelum occidentale*

Note that not all of the above species may be present in the area to be cleared.

The vegetation appears to have been planted in approximately 2002 or 2003 following the completion of the Freeway extension. The vegetation to be cleared is not representative of a highly diverse vegetation community and therefore the clearing is not at variance with this principle.

**Principle (b) Native vegetation should not be cleared if it comprises the whole or a part of, or is necessary for the maintenance of, a significant habitat for fauna indigenous to Western Australia.**

The vegetation comprises limited native species and is of a relatively immature age. Therefore the impacted vegetation does not provide significant habitat for fauna. The proposed clearing is not at variance with this principle.

**Principle (c) Native vegetation should not be cleared if it includes, or is necessary for the continued existence of, rare flora.**

No rare flora is present in the area to be cleared. The clearing is not at variance with this principle.

**Principle (d) Native vegetation should not be cleared if it comprises the whole or a part of, or is necessary for the maintenance of a threatened ecological community.**

The vegetation is comprised of planted native species. It is not representative of a threatened ecological community. The clearing is not at variance with this principle.

**Principle (e) Native vegetation should not be cleared if it is significant as a remnant of native vegetation in an area that has been extensively cleared.**

Given that the vegetation in the application area is comprised of selected planted native species, this principle is not considered to be relevant as the vegetation is not representative of a natural vegetation community. Furthermore, the clearing is limited to approximately 4ha which will not alter the conservation status of any vegetation communities. Therefore, it is considered that the clearing is not at variance with this principle.

**Principle (f) Native vegetation should not be cleared if it is growing in, or in association with, an environment associated with a watercourse or wetland.**

No wetlands are present in the application area. The clearing is not at variance with this principle.

**Principle (g) Native vegetation should not be cleared if the clearing of the vegetation is likely to cause appreciable land degradation.**

Limited clearing is required. The natural soils present in the application area are Bassendean Sands which if exposed can be susceptible to erosion under dry and windy conditions; however this risk can be adequately mitigated by implementing appropriate dust management controls during construction. The final end use will result in the construction of sealed roads with adjacent areas to be stabilised and revegetated. The clearing is not at variance with this principle.

**Principle (h) Native vegetation should not be cleared if the clearing of the vegetation is likely to have an impact on the environmental values of any adjacent or nearby conservation area.**

There are no conservation areas adjacent to the application area. The clearing is not at variance with this principle.

**Principle (i) Native vegetation should not be cleared if the clearing of the vegetation is likely to cause deterioration in the quality of surface or underground water.**

The clearing will not lead to a deterioration in the quality of surface or ground water. The clearing is not at variance with this principle.

**Principle (j) Native vegetation should not be cleared if clearing the vegetation is likely to cause, or exacerbate the incidence or intensity of flooding.**

The proposed clearing will not lead to an increase in flooding. The in situ soils are highly permeable with rainfall most likely to infiltrate rapidly. The clearing is not at variance with this principle.

## **PLANNING INSTRUMENTS AND OTHER RELEVANT MATTERS**

### **Planning Approval**

The construction of the freeway service centres has been conditionally approved by the Metro South-West Joint Development Assessment Panel. A copy of the approval can be supplied upon request.

## Land Access

An Access Deed has been negotiated with MRWA which outlines the requirements for Perkins to observe during the construction of the freeway service centres. A copy of the Access Deed is provided in Attachment 3. Under the Deed, BP Australia is required to submit to MRWA a copy of detailed designs for their approval. Disturbance areas arising from the construction of the entry/exit ramps will need to be revegetated with species comparable to what was cleared, ensuring that line of sight and other safety factors are considered in the landscape design.

MRWA has advised that all practical steps are taken to minimise the extent of clearing need. BP Australia (or its nominated representative) is to ensure that all cleared material is mulched and replaced on site, either mixed with the topsoil or placed on the topsoil to a depth of no greater than 40 mm. Seeding in hydro-mulch is acceptable provided it is done in early June, the soil and mulch are completely weed free and wet/watered prior to sowing, seed is sown at a rate of 6 kg / ha, the seeds comprise a selection from the species list on the next page.

Three tree species out of:

- *Banksia attenuata*, Slender Banksia, Piara
- *Banksia grandis*, Bull Banksia, Pulgarla
- *Banksia menziesii*, Firewood Banksia
- *Callitris preissii*, Rottnest Island Pine, Maro
- *Eucalyptus foecunda*, Narrow-leaved Red Mallee
- *Melaleuca huegelii*, Chenille Honey myrtle
- *Melaleuca teretifolia*, Banbar
- *Melaleuca viminea*, Mohan
- *Melaleuca viminalis*
- *Xylomelum occidentale*, Woody Pear, Djandin

Five shrub species out of:

- *Acacia stenoptera*, Narrow Winged Wattle
- *Bossiaea eriocarpa*, Common Brown Pea
- *Conostephium pendulum*, Pearl Flower
- *Dodonaea hackettiana*, Hackett's Hopbush
- *Gompholobium tomentosum*, Hairy Yellow Pea
- *Grevillea vestita*
- *Hemiandra pungens*, Snakebush
- *Melaleuca thymoides*
- *Monotaxis grandiflora*, Diamond of the Desert
- *Monotaxis occidentalis*
- *Persoonia saccata*, Snottygobble
- *Pimelea leucantha*
- *Rhagodia baccata*, Berry Saltbush
- *Stirlingia latifolia*, Blueboy
- *Synaphea spinulosa*
- *Thomasia glutinosa*

Five understorey species out of:

- *Caesia micrantha*, Pale Grass Lily
- *Centrolepis drummondiana*
- *Chamaescilla corymbosa*, Blue Squill
- *Conostylis aculeata*, Prickly Conostylis
- *Dasyopogon bromeliifolius*, Pineapple Bush
- *Drosera erythrorhiza*, Red Ink Sundew
- *Drosera stolonifera*, Leafy Sundew
- *Hibbertia hypericoides*, Yellow Buttercups
- *Hibbertia racemosa*, Stalked Guinea Flower
- *Homalosciadium homalocarpum*
- *Hovea trisperma*, Common Hovea
- *Isotropis cuneifolia*, Granny Bonnets
- *Kennedia prostrata*, Scarlet Runner
- *Laxmannia squarrosa*
- *Lepidosperma angustatum*
- *Levenhookia stipitata*, Common Stylewort

Perkins Builders – Freeway Service Centres  
Vegetation Clearing Permit

- *Lobelia tenuior*, Slender Lobelia
- *Petrophile linearis*, Pixie Mops
- *Phlebocarya ciliate*
- *Scaevola canescens*, Grey Scaevola
- *Siloxerus humifusus*, Procumbent Siloxerus
- *Stylidium brunonianum*, Pink Fountain Triggerplant
- *Stylidium piliferum*, Common Butterfly Triggerplant
- *Thysanotus arenarius*

Areas revegetated are to be protected from vehicles by star pickets and flagging tape or other similar methods.

## CONCLUSION

Perkins Builders have been appointed by BP Australia to design and construct two freeway service centres along the Kwinana Freeway in Baldivis. The construction of the centres will require the removal of planted native vegetation present in the Kwinana Freeway road reserve for the construction of entry and exit ramps.

The vegetation to be removed is understood to have been planted as a commitment made in relation to approval from the Minister for Environment under the *Environmental Protection Act 1986*. The planting includes a limited range of species that are native to the locality and are estimated to be approximately 12 years old. The removal of the revegetation is considered to not contravene the ten clearing principles and therefore a clearing permit is being requested.

AMENDMENTS	
NO.	DESCRIPTION
1	ISSUE FOR PRELIMINARY DESIGN
2	ISSUE FOR PRELIMINARY DESIGN
3	ISSUE FOR PRELIMINARY DESIGN
4	ISSUE FOR PRELIMINARY DESIGN
5	ISSUE FOR PRELIMINARY DESIGN
6	ISSUE FOR PRELIMINARY DESIGN
7	ISSUE FOR PRELIMINARY DESIGN
8	ISSUE FOR PRELIMINARY DESIGN
9	ISSUE FOR PRELIMINARY DESIGN
10	ISSUE FOR PRELIMINARY DESIGN
11	ISSUE FOR PRELIMINARY DESIGN
12	ISSUE FOR PRELIMINARY DESIGN
13	ISSUE FOR PRELIMINARY DESIGN
14	ISSUE FOR PRELIMINARY DESIGN
15	ISSUE FOR PRELIMINARY DESIGN
16	ISSUE FOR PRELIMINARY DESIGN
17	ISSUE FOR PRELIMINARY DESIGN
18	ISSUE FOR PRELIMINARY DESIGN
19	ISSUE FOR PRELIMINARY DESIGN
20	ISSUE FOR PRELIMINARY DESIGN
21	ISSUE FOR PRELIMINARY DESIGN
22	ISSUE FOR PRELIMINARY DESIGN
23	ISSUE FOR PRELIMINARY DESIGN
24	ISSUE FOR PRELIMINARY DESIGN
25	ISSUE FOR PRELIMINARY DESIGN
26	ISSUE FOR PRELIMINARY DESIGN
27	ISSUE FOR PRELIMINARY DESIGN
28	ISSUE FOR PRELIMINARY DESIGN
29	ISSUE FOR PRELIMINARY DESIGN
30	ISSUE FOR PRELIMINARY DESIGN
31	ISSUE FOR PRELIMINARY DESIGN
32	ISSUE FOR PRELIMINARY DESIGN
33	ISSUE FOR PRELIMINARY DESIGN
34	ISSUE FOR PRELIMINARY DESIGN
35	ISSUE FOR PRELIMINARY DESIGN
36	ISSUE FOR PRELIMINARY DESIGN
37	ISSUE FOR PRELIMINARY DESIGN
38	ISSUE FOR PRELIMINARY DESIGN
39	ISSUE FOR PRELIMINARY DESIGN
40	ISSUE FOR PRELIMINARY DESIGN
41	ISSUE FOR PRELIMINARY DESIGN
42	ISSUE FOR PRELIMINARY DESIGN
43	ISSUE FOR PRELIMINARY DESIGN
44	ISSUE FOR PRELIMINARY DESIGN
45	ISSUE FOR PRELIMINARY DESIGN
46	ISSUE FOR PRELIMINARY DESIGN
47	ISSUE FOR PRELIMINARY DESIGN
48	ISSUE FOR PRELIMINARY DESIGN
49	ISSUE FOR PRELIMINARY DESIGN
50	ISSUE FOR PRELIMINARY DESIGN
51	ISSUE FOR PRELIMINARY DESIGN
52	ISSUE FOR PRELIMINARY DESIGN
53	ISSUE FOR PRELIMINARY DESIGN
54	ISSUE FOR PRELIMINARY DESIGN
55	ISSUE FOR PRELIMINARY DESIGN
56	ISSUE FOR PRELIMINARY DESIGN
57	ISSUE FOR PRELIMINARY DESIGN
58	ISSUE FOR PRELIMINARY DESIGN
59	ISSUE FOR PRELIMINARY DESIGN
60	ISSUE FOR PRELIMINARY DESIGN
61	ISSUE FOR PRELIMINARY DESIGN
62	ISSUE FOR PRELIMINARY DESIGN
63	ISSUE FOR PRELIMINARY DESIGN
64	ISSUE FOR PRELIMINARY DESIGN
65	ISSUE FOR PRELIMINARY DESIGN
66	ISSUE FOR PRELIMINARY DESIGN
67	ISSUE FOR PRELIMINARY DESIGN
68	ISSUE FOR PRELIMINARY DESIGN
69	ISSUE FOR PRELIMINARY DESIGN
70	ISSUE FOR PRELIMINARY DESIGN
71	ISSUE FOR PRELIMINARY DESIGN
72	ISSUE FOR PRELIMINARY DESIGN
73	ISSUE FOR PRELIMINARY DESIGN
74	ISSUE FOR PRELIMINARY DESIGN
75	ISSUE FOR PRELIMINARY DESIGN
76	ISSUE FOR PRELIMINARY DESIGN
77	ISSUE FOR PRELIMINARY DESIGN
78	ISSUE FOR PRELIMINARY DESIGN
79	ISSUE FOR PRELIMINARY DESIGN
80	ISSUE FOR PRELIMINARY DESIGN
81	ISSUE FOR PRELIMINARY DESIGN
82	ISSUE FOR PRELIMINARY DESIGN
83	ISSUE FOR PRELIMINARY DESIGN
84	ISSUE FOR PRELIMINARY DESIGN
85	ISSUE FOR PRELIMINARY DESIGN
86	ISSUE FOR PRELIMINARY DESIGN
87	ISSUE FOR PRELIMINARY DESIGN
88	ISSUE FOR PRELIMINARY DESIGN
89	ISSUE FOR PRELIMINARY DESIGN
90	ISSUE FOR PRELIMINARY DESIGN
91	ISSUE FOR PRELIMINARY DESIGN
92	ISSUE FOR PRELIMINARY DESIGN
93	ISSUE FOR PRELIMINARY DESIGN
94	ISSUE FOR PRELIMINARY DESIGN
95	ISSUE FOR PRELIMINARY DESIGN
96	ISSUE FOR PRELIMINARY DESIGN
97	ISSUE FOR PRELIMINARY DESIGN
98	ISSUE FOR PRELIMINARY DESIGN
99	ISSUE FOR PRELIMINARY DESIGN
100	ISSUE FOR PRELIMINARY DESIGN

NOTES

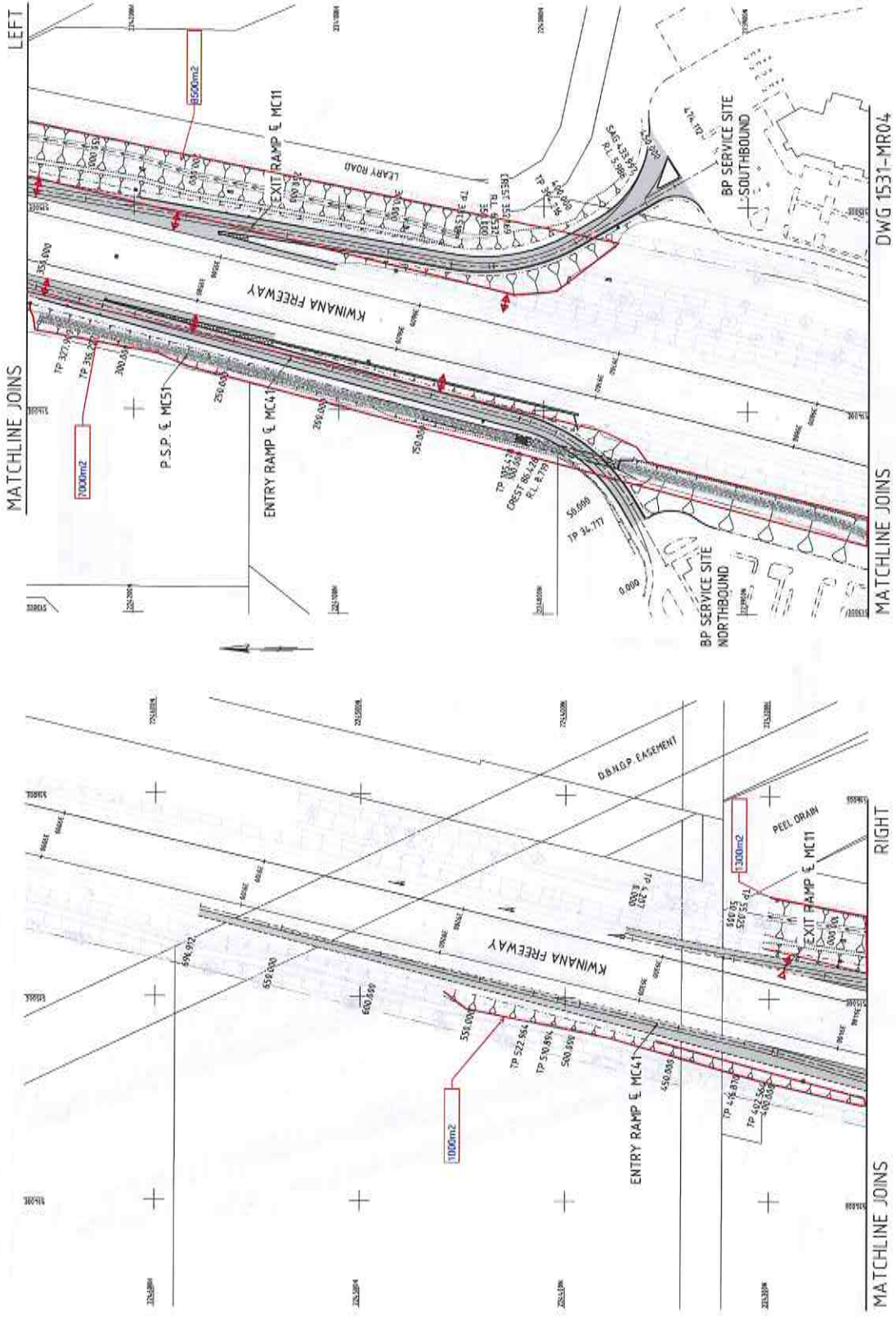
**METADATA**  
 PROJECT NAME: KWINANA FREEWAY (H015)  
 DATE OF CAPTURE: 27/11/2014  
 DRAWING NUMBER: 1531-MR03  
 DATE OF CAPTURE: 27/11/2014  
 MAIN ROADS PROJECT ZONE: PC034  
 HEIGHT DATUM: A.H.D.

**pritchard francis**  
 ENGINEERING & ARCHITECTURE  
 15-258-531-MR03  
 PROJECT: KWINANA FREEWAY (H015)  
 DRAWING: 1531-MR03  
 SHEET: 1 OF 2

**mainroads**  
 WESTERN AUSTRALIA  
 1531-MR03

**KWINANA FREEWAY (H015)**  
 KUNDING ROAD TO SAFETY BAY ROAD  
 3R.10.10 TO 3R.10.10  
 PAVEMENT AND SURFACING PLAN  
 SHEET 1 OF 2

**1531 - MR03**



**LEGEND**  
 PROPOSED BLACK ASPHALT ROAD PAVEMENT  
 PROPOSED ASPHALT/PRIMEVAL SHOULDERS  
 PROPOSED CONCRETE KERBS



4534