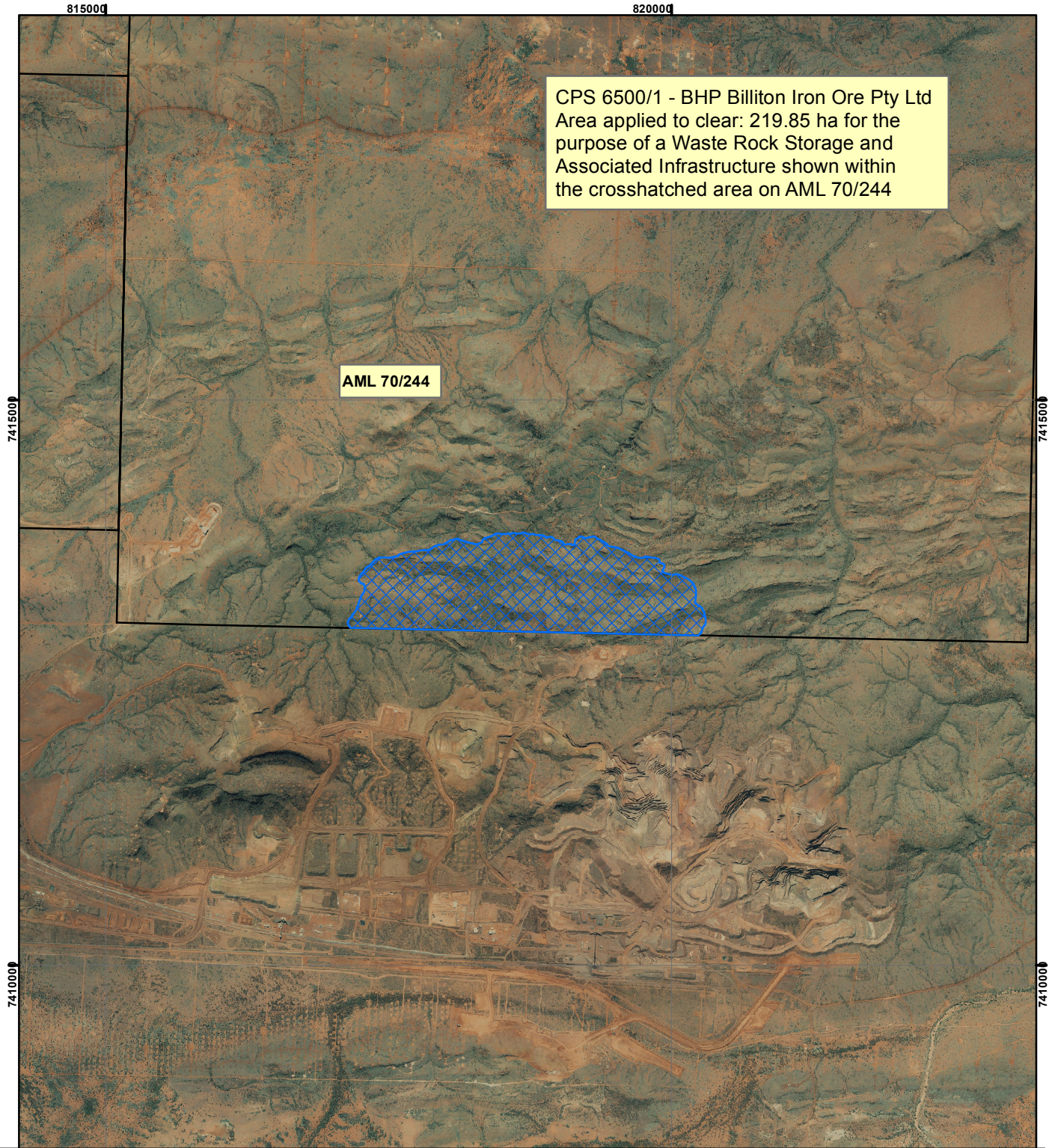



CPS 6500/1 - BHP Billiton Iron Ore Pty Ltd



CPS 6500/1 - BHP Billiton Iron Ore Pty Ltd
Area applied to clear: 219.85 ha for the
purpose of a Waste Rock Storage and
Associated Infrastructure shown within
the crosshatched area on AML 70/244

AML 70/244

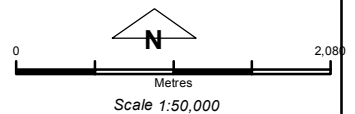
Legend

 Clearing Instrument

Mining Tenements

FMT_TENID

 ML 244SA



Geocentric Datum Australia 1994

Note: the data in this map have not been projected. This may result in geometric distortion or measurement inaccuracies.

..... Date

Officer with delegated authority under Section 20 of the Environmental Protection Act 1986

Information derived from this map should be confirmed with the data custodian acknowledged by the agency acronym in the legend.

