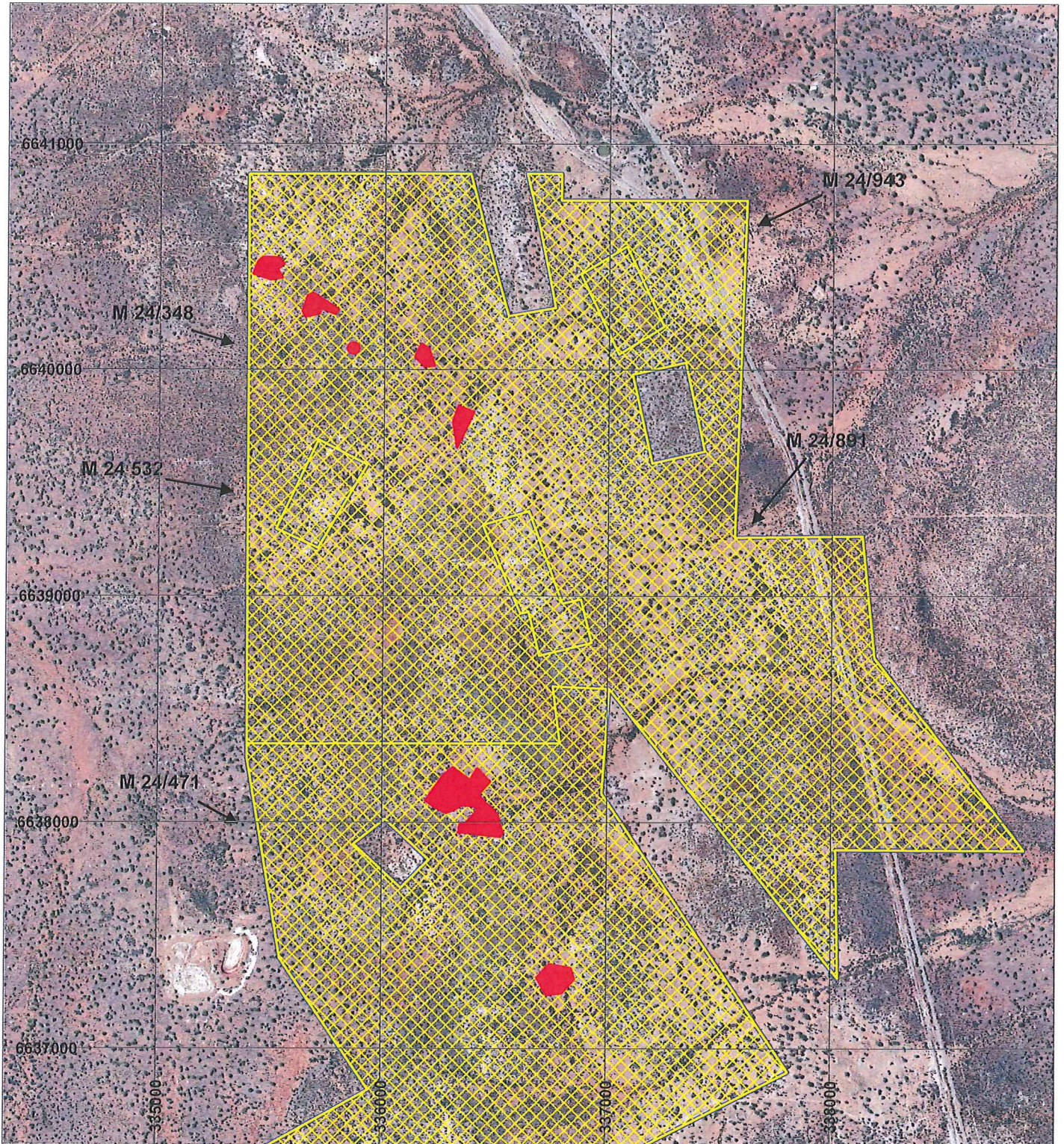




PLAN 6505/1A



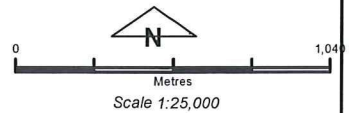
Legend

Clearing Instruments

-  Areas Approved to Clear
-  Areas Subject to Conditions

Mining Tenements

- 
-  Imagery



Geocentric Datum Australia 1994

Note: the data in this map have not been projected. This may result in geometric distortion or measurement inaccuracies.

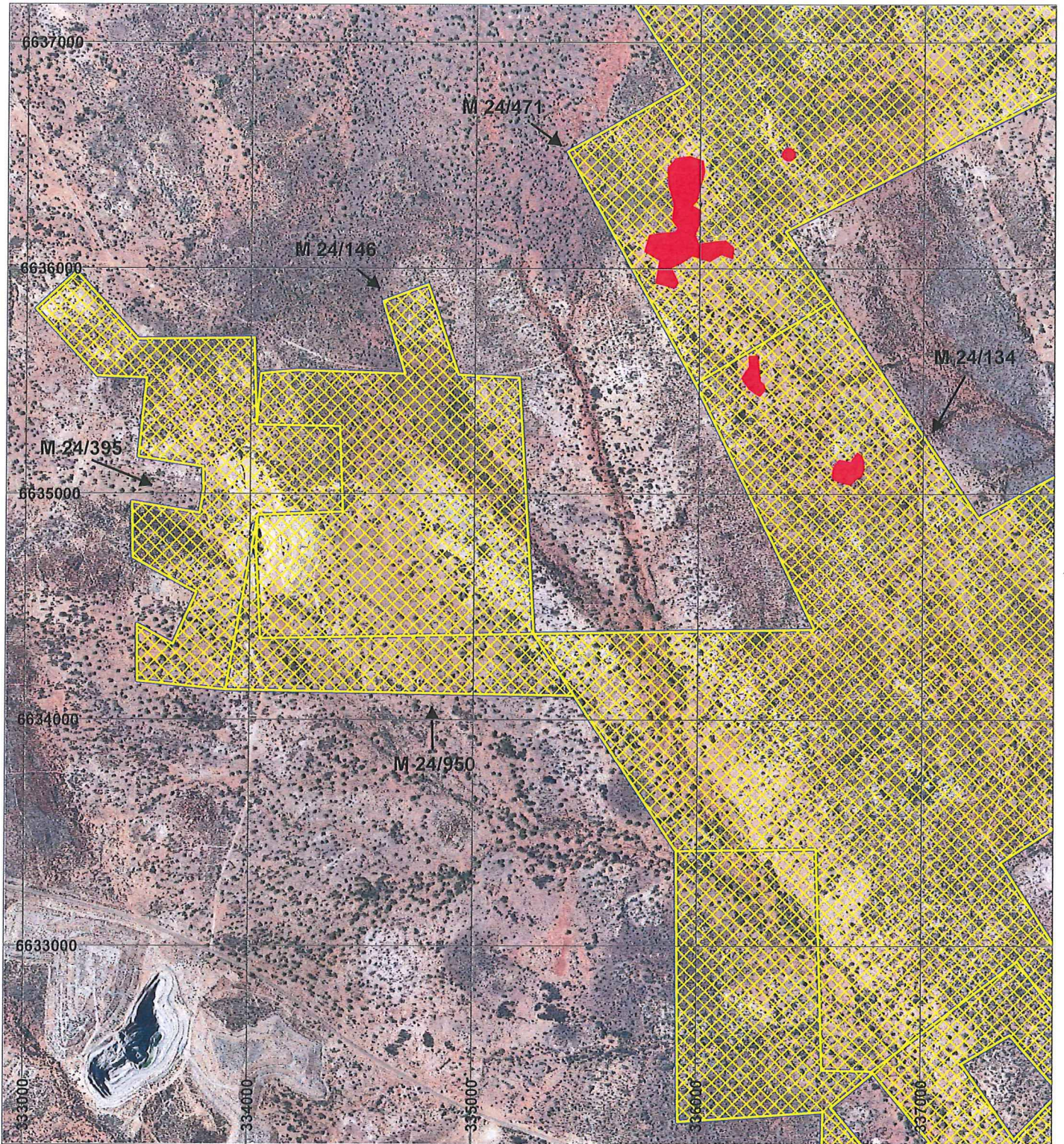
Virginia Simms Date 30/4/2015
VIRGINIA SIMMS

Officer with delegated authority under Section 20 of the Environmental Protection Act 1986

Information derived from this map should be confirmed with the data custodian acknowledged by the agency acronym in the legend.





PLAN 6505/1B



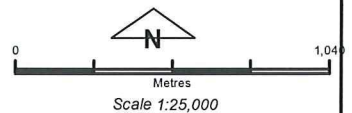
Legend

Clearing Instruments

-  Areas Approved to Clear
-  Areas Subject to Conditions

Mining Tenements

-  Imagery
-  Imagery



Geocentric Datum Australia 1994

Note: the data in this map have not been projected. This may result in geometric distortion or measurement inaccuracies.

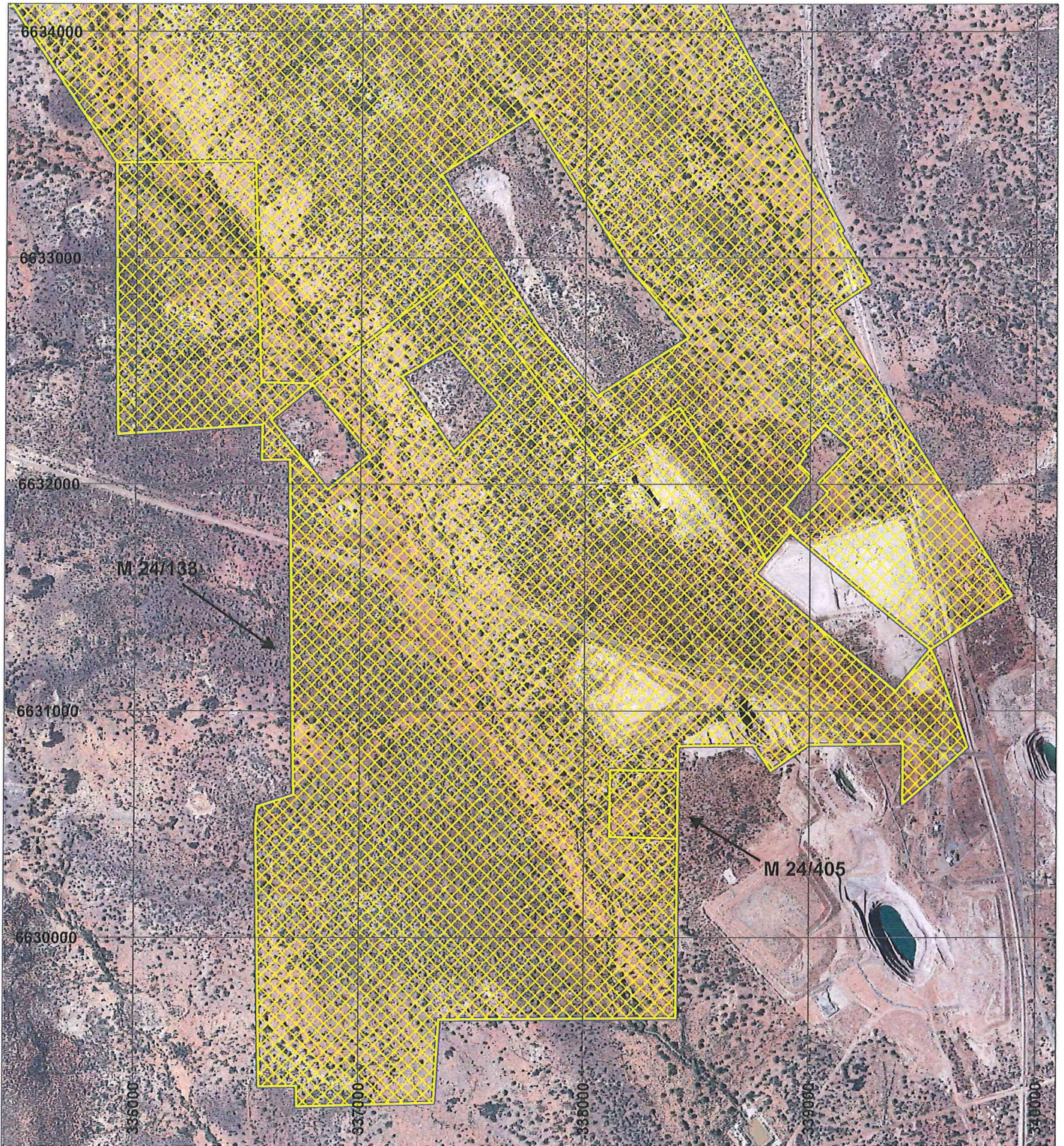
Virginia Simms Date 30/4/2015

VIRGINIA SIMMS
Officer with delegated authority under Section 20 of
the Environmental Protection Act 1986

Information derived from this map should be
confirmed with the data custodian acknowledged
by the agency acronym in the legend.





PLAN 6505/1C




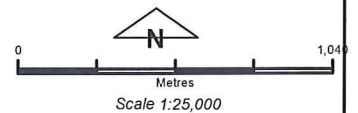
Legend

Clearing Instruments

-  Areas Approved to Clear
-  Areas Subject to Conditions

Mining Tenements

- 
-  Imagery



Geocentric Datum Australia 1994

Note: the data in this map have not been projected. This may result in geometric distortion or measurement inaccuracies.

 Date 30/4/2015

VIRGINIA SIMMS
Officer with delegated authority under Section 20 of
the Environmental Protection Act 1986

Information derived from this map should be
confirmed with the data custodian acknowledged
by the agency acronym in the legend.

