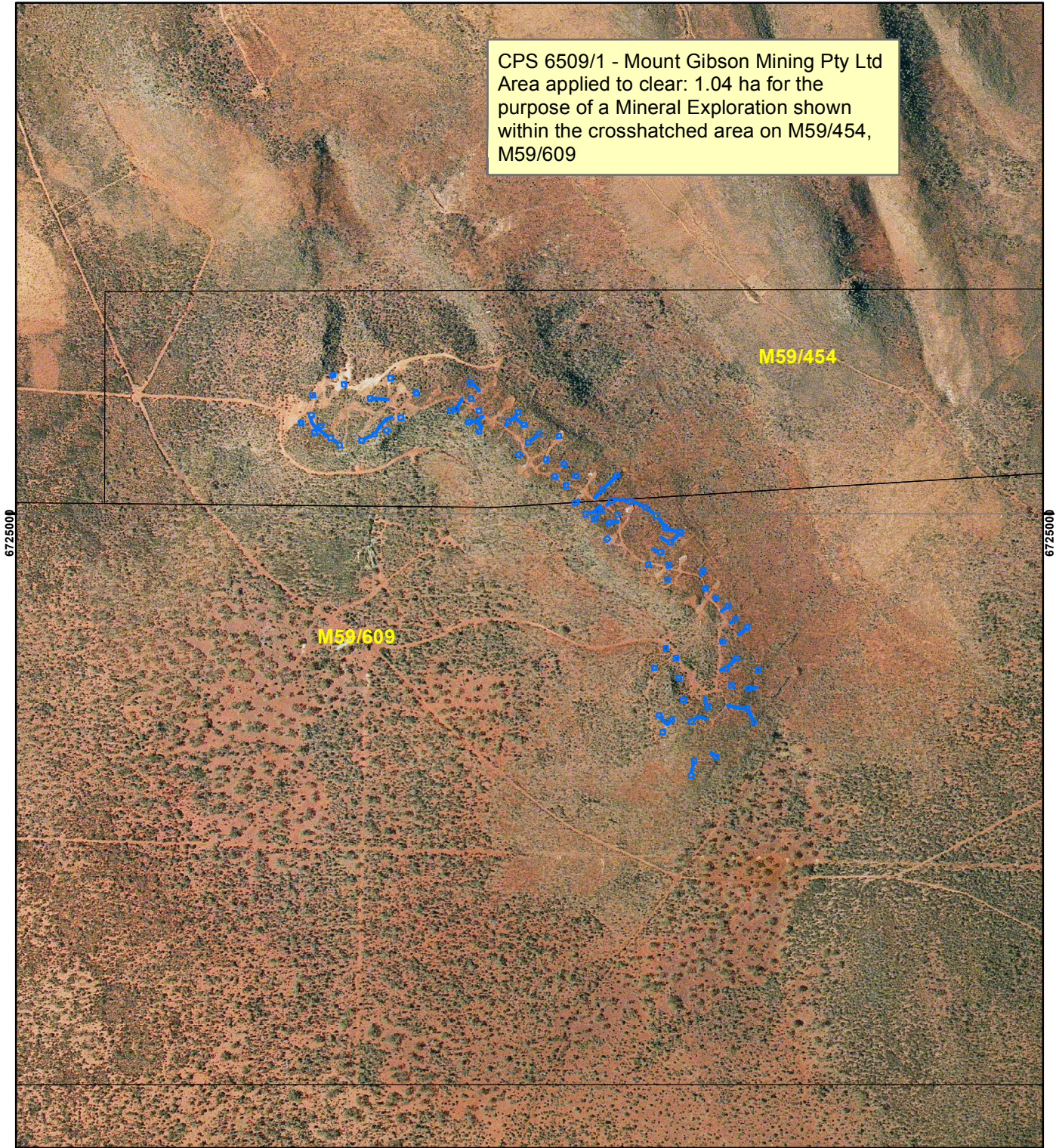



CPS 6509/1 - Mount Gibson Mining Pty Ltd

CPS 6509/1 - Mount Gibson Mining Pty Ltd
 Area applied to clear: 1.04 ha for the
 purpose of a Mineral Exploration shown
 within the crosshatched area on M59/454,
 M59/609



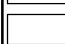


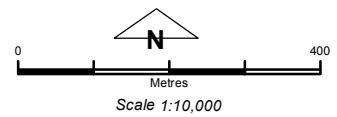
Legend

 Clearing Instruments

Mining Tenements

FMT_TENID

- 
-  M 59/454-I
-  M 59/609-I



Geocentric Datum Australia 1994

Note: the data in this map have not been projected. This may result in geometric distortion or measurement inaccuracies.

..... Date

Officer with delegated authority under Section 20 of the Environmental Protection Act 1986

Information derived from this map should be confirmed with the data custodian acknowledged by the agency acronym in the legend.

