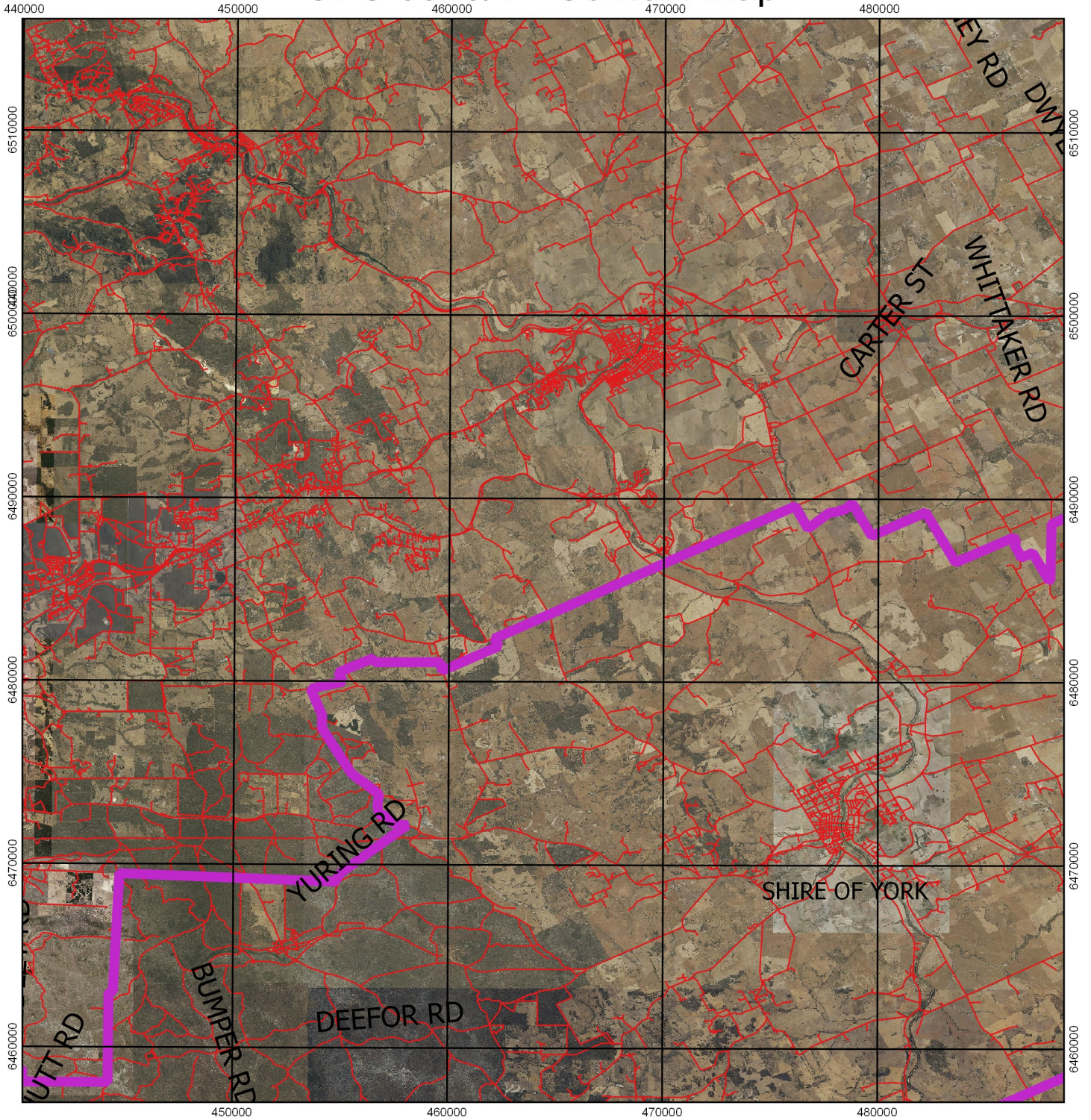


CPS 6515/1 - Context Map



Legend

-  local_gov_authority
-  Clearing Instruments Proposal
-  Roads
-  Cadastre
- Virtual Mosaic
- townsites



1:200,000

MGA 94
Geocentric Datum of Australia 1994

Officer with delegated authority under Section 20
of the Environmental Protection Act 1986



GOVERNMENT OF
WESTERN AUSTRALIA