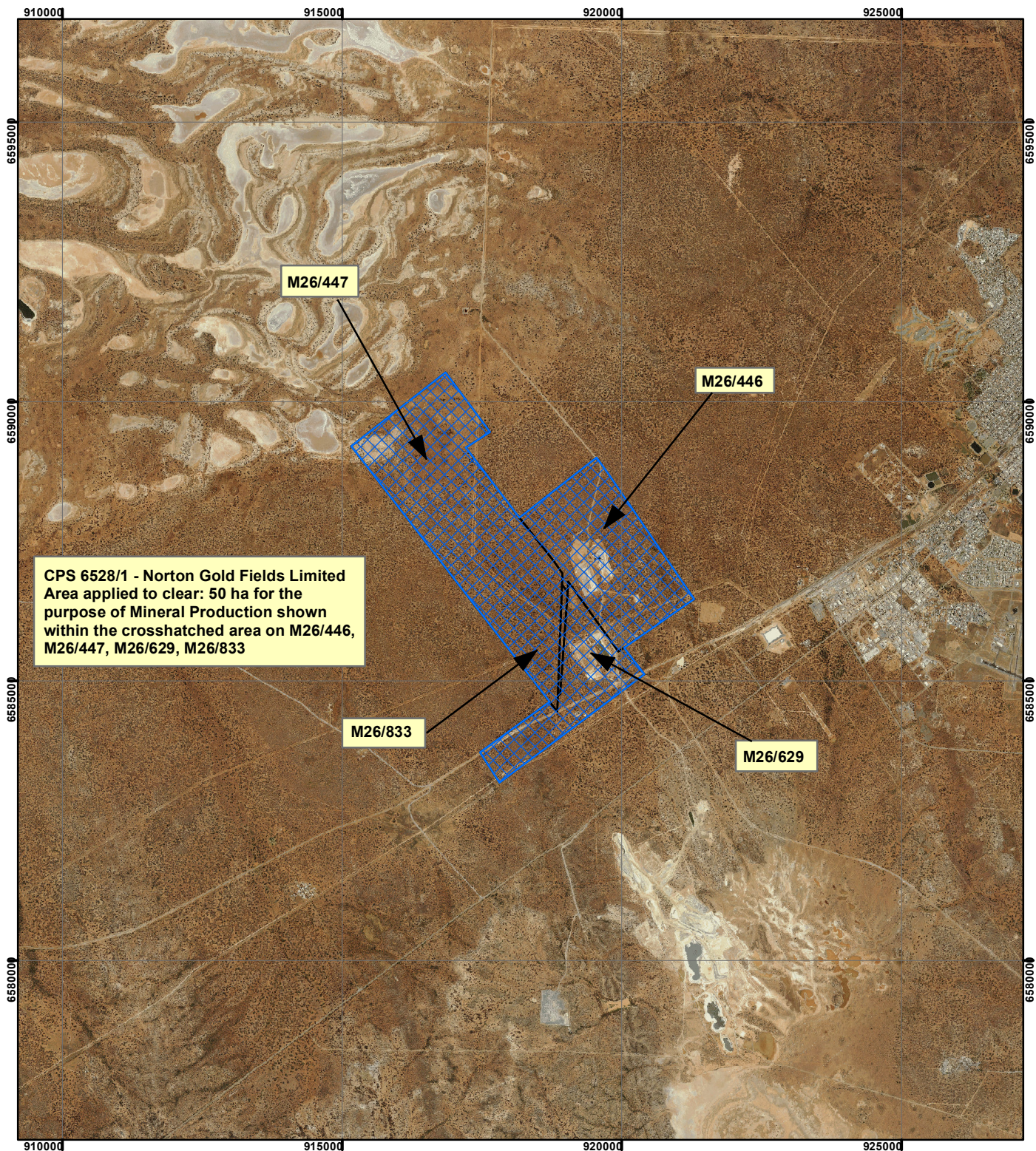




CPS 6528/1 - Norton Gold Fields Limited



CPS 6528/1 - Norton Gold Fields Limited
 Area applied to clear: 50 ha for the
 purpose of Mineral Production shown
 within the crosshatched area on M26/446,
 M26/447, M26/629, M26/833

Legend

 Clearing Instruments

 Clearing Instruments

Mining Tenements

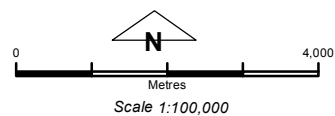
FMT_TENID

 M 26/446

 M 26/447

 M 26/629

 M 26/833



Geocentric Datum Australia 1994

Note: the data in this map have not been projected. This may result in geometric distortion or measurement inaccuracies.

..... Date

Officer with delegated authority under Section 20 of the Environmental Protection Act 1986

Information derived from this map should be confirmed with the data custodian acknowledged by the agency acronym in the legend.

