

ENVIRONMENTAL ASSESSMENT FOR NATIVE VEGETATION CLEARING – PURPOSE PERMIT FOR THE OVAL EXTENSION AND SPORTING FACILITIES INSTALLATION WITHIN WARRADALE RESERVE, LANDSDALE

ISSUE

To consider granting a Native Vegetation Clearing Permit to enable the extension of the current oval to a senior size football oval and the installation of lighting, relocation of cricket nets and a carpark extension within Warradale Reserve, Landsdale.

BACKGROUND AND DETAIL OF PROJECT

The City of Wanneroo is proposing to undertake the abovementioned works within Warradale Reserve in Landsdale. The proposed works will upgrade the current facilities in order to accommodate different sporting codes and increased use being experienced at the Reserve.

The design has sought to minimize impact on the surrounding natural environment wherever feasible. The majority of the upgrade works will be constructed on already cleared areas. In order to undertake these works and in order to meet the current standards for sporting field design, it is necessary to clear three (3) *Eucalyptus rudis* trees.

The City has consulted with an arboriculturist about the possible relocation of the three (3) *Eucalyptus rudis* trees to another suitable area within the Reserve, however the arboriculturist has identified all three trees as being unsuitable for relocation/transplanting due to the following;

- Eucalyptus species do not tolerate being moved; and
- All three trees are out of their juvenile stage (meaning diameter of the trunk is larger than 100mm);

FLORA AND VEGETATION ASSESSMENT

A site inspection by City Officers and an Arboriculturist in February 2012 identified all three (3) tree's as *Eucalyptus rudis*.

In relation to clearing principle 'a) *it comprises a high level of biological diversity*'; the clearing of three (3) native trees at Warradale Reserve is not likely to be at variance with this principle. Warradale Reserve covers ~11.32 hectares, where the native vegetation has been previously cleared to create park and sporting facilities. A small number of remnant trees remain with no intact understorey. The Vegetation Complex is mapped as being the Karrakatta – Central and South variety in accordance with Hedde *et al.* (1980).

In relation to the clearing principle 'b) *it comprises the whole or part of, or is necessary for the maintenance of, a significant habitat for fauna indigenous to Western Australia*'; the clearing of three (3) trees are not likely to be at variance with this principle.

In relation to clearing principle 'c) *it includes, or is necessary for the continued existence of, flora declared to be rare under the Wildlife Protection Act 1950*'; No Declared Rare Flora were recorded on the site, therefore the proposed clearing of is not likely to be at variance with this principle.

In relation to clearing principle 'd) *it comprises the whole or part of, or is necessary for the maintenance of a threatened ecological community*'; Warradale Reserve contains no Threatened

In relation to clearing principle 'e) *it is significant as a remnant of native vegetation in an area that has been extensively cleared*'; Warradale Reserve is identified in mapping as Karrakatta – Central and South Complex however no intact areas of remnant bushland remain within this reserve. The current extent of the Karrakatta – Central and South Complex is 23.9% within the Perth Metropolitan Region. Therefore the proposed clearing of is not likely to be at variance with this principle.

In relation to clearing principle 'f) *if it is growing in, or in association with, an environment associated with a watercourse or wetland*'; Warradale Reserve contains Geomorphic Wetland 'Snake Swamp' however this wetland is highly altered and does not contain any intact remnant vegetation around its periphery. The clearing of three (3) trees is not likely to be at variance with this principle.

In relation to clearing principle 'g) *if the clearing of the vegetation is likely to cause appreciable land degradation*'; the clearing of three (3) trees are not likely to cause land degradation, therefore the proposed clearing is not at variance with this principle.

In relation to clearing principle 'h) *the clearing of the vegetation is likely to have an impact on the environmental values of any adjacent or nearby conservation area*'; the proposed works do not impact on the a Bush Forever Site and therefore the proposed clearing of is not likely to be at variance with this principle.

In relation to clearing principle 'i) *if the clearing of the vegetation is likely to cause deterioration in the quality of surface or underground water*'; the proposed clearing of three (3) trees are not likely to be at variance with this principle.

In relation to clearing principle 'j) *if the clearing of the vegetation is likely to cause, or exacerbate, the incidence or intensity of flooding*'; the clearing of three (3) trees is not likely to be at variance with this principle.

RECOMMENDATION

The City seeks the Department of Environment Regulation approval to clear three (3) *Eucalyptus rudis* trees, in order to facilitate the construction of the oval extension and installation of new sporting facilities at Warradale Reserve, Landsdale.

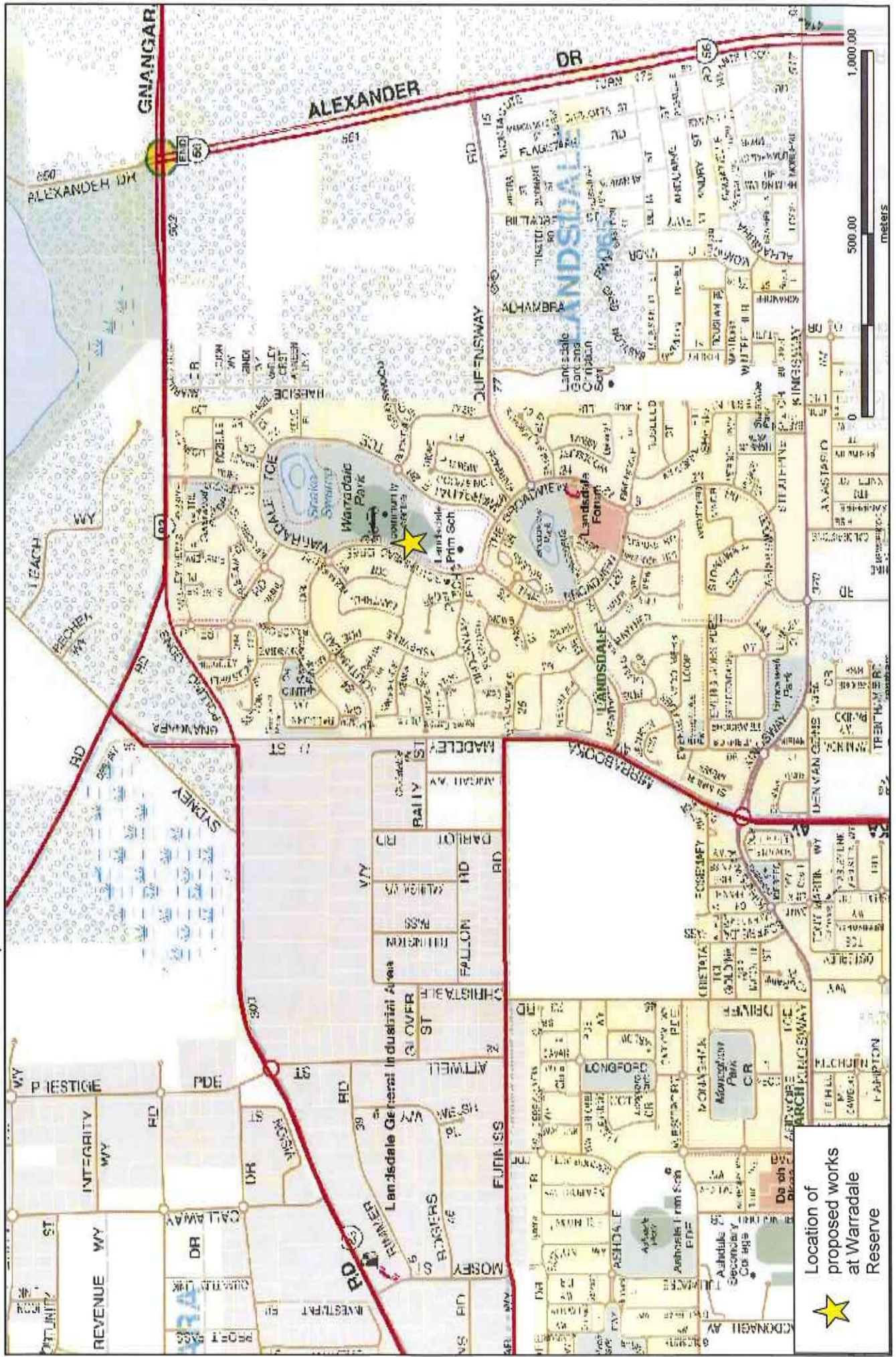
SITE PHOTOS – WARRADALE RESERVE, LANDSDALE



SITE PHOTOS – WARRADALE RESERVE, LANDSDALE

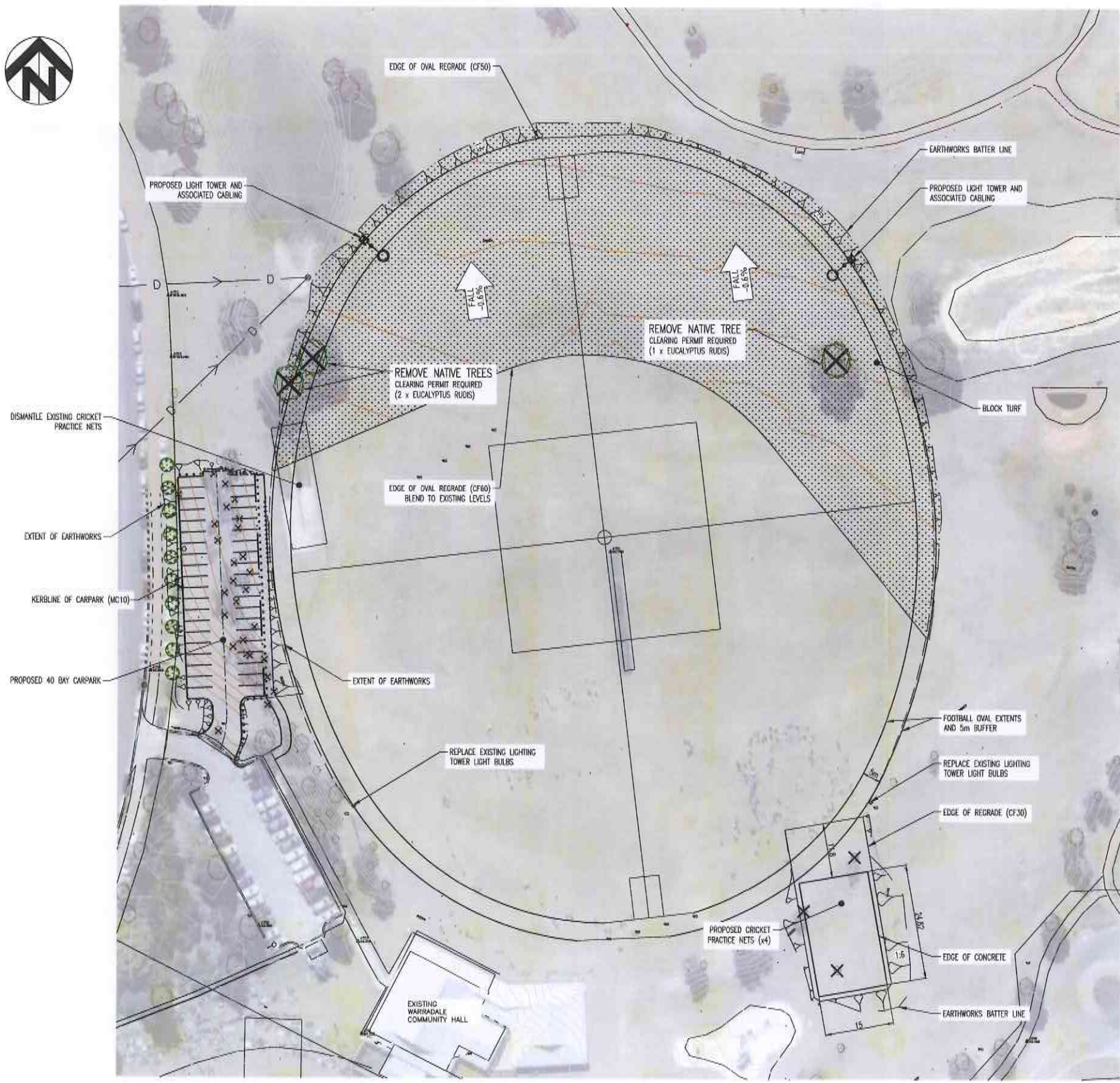


LOCATION MAP - WARRADALE RESERVE, LANDSDALE



Location of proposed works at Warradale Reserve





EXISTING	LEGEND	PROPOSED
	MOUNTABLE KERB	
	BARRIER KERB	
	EDGE OF ASPHALT	
	FOOTPATH (CONCRETE)	
	CONTOUR	
	KERB RAMP	
	EXTENT OF EARTHWORKS	
	TREE TO BE REMOVED	
	NATIVE TREE TO BE REMOVED	
	TIMBER POST BOLLARD	
	LIGHTING	
	TREE - EUCALYPTUS TOOTIANA (45L POTS)	

- NOTES:**
1. CADASTRAL INFORMATION APPROXIMATE ONLY.
 2. SERVICE LOCATIONS DIAGRAMMATIC ONLY. CONTACT SERVICE AUTHORITIES FOR EXACT IN GROUND LOCATIONS.
 3. ALL DISTURBANCES TO EXISTING VERGE RETICULATION AND TURFING TO BE REINSTATED.

NATIVE TREES REQUIRING CLEARING PERMIT	
QUANTITY (TREES)	SPECIES
3	EUCALYPTUS RUDES

CITY OF WANNEROO
INFRASTRUCTURE

WARRADALE PARK
UPGRADES
LANDSDALE

CLEARING PLAN
SHEET 1 OF 1

DRAWING No. SHEET REVISION ORIGINAL Dwg. SIZE
2306 - 5 - 0 A1

No.	REVISION	BY	DATE	AUTH	No.	REVISION	BY	DATE	AUTH	SCALE	SURVEYED	DRAWN	AUTHORIZED	FILE No.
0	ISSUED FOR CONSTRUCTION									1:500	N/A	S. FENTON		6566
			3/2012									CIVIL PROJECTS DESIGNER	MANAGER INFRASTRUCTURE PROJECTS	
												CHECKED:	APPROVED:	
												* P. WILLIAMS	* D. BLAIR	
												COORDINATOR DESIGN AND CONSTRUCTION	DIRECTOR INFRASTRUCTURE	